



# LED Armonia™ Slim Line Bar

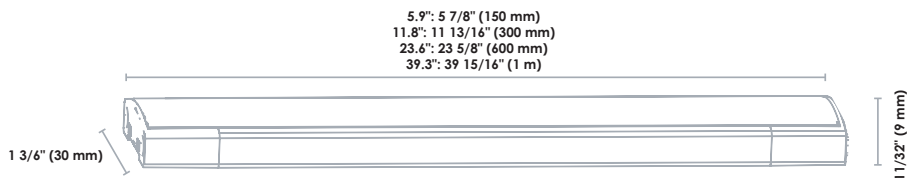
These LED Armonia™ Slim Line Bars are the perfect fit for multiple applications whether residential or commercial, such as undercabinet lighting, cove lighting, shelves and work stations. These interconnectable LED bars are easy to install and assemble. These bars neatly define contours of shapes with or without interruption and they ensure high quality lighting. The Armonia™ series allows you to build a system that is adapted to your needs without any cutting or soldering.

- Linkable bars that provide continuous lighting
- Aluminum housing and polycarbonate frost lens produces a soft light
- Constant current design will ensure the brightness and colour consistency from end-to-end
- Slim design – Thickness of 9 mm
- Maximum run in length: 26.2 ft. (8 m)
- Maximum power run: 120 W
- Dimmable



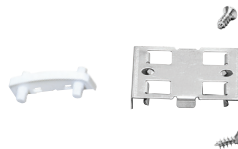
## LED Slim Line Bars

Order code	Description	Watts (W)	Volts (VDC)	Colour temp. (K)	Lumen output (lm)	CRI	Life L70 (hrs)	Beam angle (°)	Case qty (inner/master)
<b>5.9"</b>									
64576	LUCS/5.9IN/2.5W/27K/STD	2.5	24	2 700	180	82	25 000	120	4/40
64577	LUCS/5.9IN/2.5W/30K/STD	2.5	24	3 000	200	82	25 000	120	4/40
64578	LUCS/5.9IN/2.5W/40K/STD	2.5	24	4 000	210	82	25 000	120	4/40
<b>11.8"</b>									
64579	LUCS/11.8IN/5W/27K/STD	5	24	2 700	400	82	25 000	120	4/40
64580	LUCS/11.8IN/5W/30K/STD	5	24	3 000	420	82	25 000	120	4/40
64581	LUCS/11.8IN/5W/40K/STD	5	24	4 000	450	82	25 000	120	4/40
<b>23.6"</b>									
64582	LUCS/23.6IN/9W/27K/STD	9	24	2 700	700	82	25 000	120	4/40
64583	LUCS/23.6IN/9W/30K/STD	9	24	3 000	750	82	25 000	120	4/40
64584	LUCS/23.6IN/9W/40K/STD	9	24	4 000	760	82	25 000	120	4/40
<b>39.3"</b>									
64585	LUCS/39.3IN/15W/27K/STD	15	24	2 700	1 100	82	25 000	120	4/40
64586	LUCS/39.3IN/15W/30K/STD	15	24	3 000	1 200	82	25 000	120	4/40
64587	LUCS/39.3IN/15W/40K/STD	15	24	4 000	1 250	82	25 000	120	4/40



## Included in the box

- 5.9" – 1 middle connector and 1 fixing clip – 180°
- 11.8" / 23.6" – 1 middle connector and 2 fixing clips – 180°
- 39.3" – 1 middle connector and 3 fixing clips – 180°



Lumen values are derived from photometric testing  
 For a complete list of compatible dimmers, please visit [www.standardpro.com](http://www.standardpro.com)  
 For a flat installation, remove the knockouts on both ends of the LED bar

# LED Drivers

These LED bars can be dimmed directly at the bar using the cable connector with dimmer switch and a plug-in non-dimmable power supply or directly with a wall dimmer using a hardwire dimmable power supply.

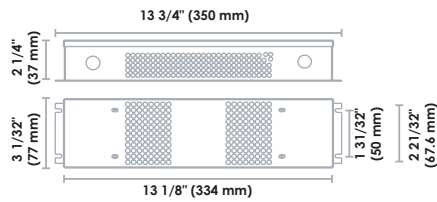


24V Hardwire

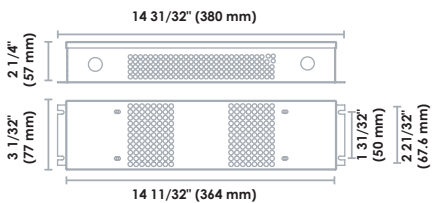


24V Plug-in

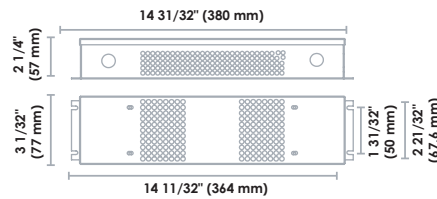
Order code	Description	Watts (W)	Volts (VDC)	Output volts (VDC)	Input current (mA)	Output current (mA)	Frequency (Hz)	Finish	VDC connector (Yes/No)	IP rating	Case qty (master)
<b>Hardwire - Dimmable</b>											
64864 <sup>1</sup>	LUC/PS/50W/24VDC/HW/D/STD	50	100-240	24	1 600	2 100	50/60	White	Yes	IP20	10
64865 <sup>1,3,4</sup>	LUC/PS/80W/24VDC/HW/D/STD	80	100-240	24	1 450	3 330	50/60	Black	Yes	IP66	10
64866 <sup>1,3</sup>	LUC/PS/120W/24VDC/HW/D/STD	120	100-240	24	2 000	5 000	50/60	Black	Yes	IP66	10
<b>Plug-in - Non-dimmable</b>											
64573 <sup>2,4</sup>	LUC/PS/36W/24VDC/PLUG/STD	36	100-240	24	1 200	1 500	50/60	Black	Yes	IP20	25
64574 <sup>2,4</sup>	LUC/PS/60W/24VDC/PLUG/STD	60	100-240	24	1 200	2 500	50/60	Black	Yes	IP20	25
64575 <sup>2,4</sup>	LUC/PS/120W/24VDC/PLUG/STD	120	100-240	24	1 600	5 000	50/60	Black	Yes	IP20	20



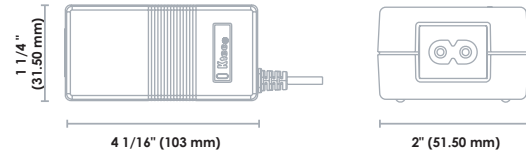
64864



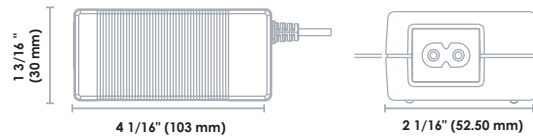
64865



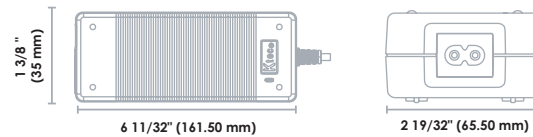
64866



64573



64574



64575



For a complete list of compatible dimmers, please visit [www.standardpro.com](http://www.standardpro.com)  
<sup>4</sup>If used with the LED tapes: needs to be paired with a wire to DC female connector (66240)