

EMT

Set Screw Fittings

CI5404 (-IT) /
CI5408 (-IT)



CI5410 (-IT) /
CI5432 (-IT)



Cat. No.		Trade Size (in.)
Regular	Insulated	
EMT Set Screw Fittings (Steel)		
CI5404	CI5404-IT	1/2
CI5406	CI5406-IT	3/4
CI5408	CI5408-IT	1
CI5410	CI5410-IT	1-1/4
CI5412	CI5412-IT	1-1/2
CI5416	CI5416-IT	2
CI5420	CI5420-IT	2-1/2
CI5424	CI5424-IT	3
CI5432	CI5432-IT	4

Concrete-tight

CI5004 (-IT) /
CI5008 (-IT)



CI5010 (-IT) /
CI5016 (-IT)



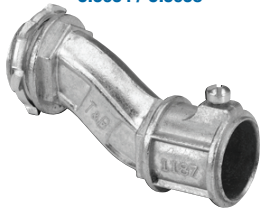
CI5020 (-IT) /
CI5032 (-IT)



Cat. No.		Trade Size (in.)
Regular (Zinc)	Insulated (Steel)	
EMT Set Screw Fittings (Zinc)		
CI5004	CI5004-IT	1/2
CI5006	CI5006-IT	3/4
CI5008	CI5008-IT	1
CI5010	CI5010-IT	1-1/4
CI5012	CI5012-IT	1-1/2
CI5016	CI5016-IT	2
CI5020	CI5020-IT	2-1/2
CI5024	CI5024-IT	3
CI5032	CI5032-IT	4

Concrete-tight. Zinc Die Cast Locknut. IT: with insulated throat.

CI5054 / CI5058



Cat. No.	Trade Size (in.)	Offset (in.)
EMT Set Screw Offset Body Fittings (Zinc Alloy)		
CI5054	1/2	3/8
CI5056	3/4	3/4
CI5058	1	3/4

Concrete-tight.

TC121A-FA



Cat. No.		Trade Size (in.)	Std. Pkg. Qty
Regular	Insulated		
EMT / Fire Alarm Set Screw Fittings (Red Steel)			
TC121A-FA	TC721A-FA	1/2	50
TC122A-FA	TC722A-FA	3/4	50
TC123A-FA	TC723A-FA	1	25

EMT

Set Screw Couplings

CI5504 / CI5508



CI5120 / CI5132



CI5104 / CI5116



CI5510 / CI5532



Cat. No.		Trade Size (in.)
Steel	Zinc Alloy	
EMT Set Screw Couplings		
CI5504*	CI5104	1/2
CI5506*	CI5106	3/4
CI5508*	CI5108	1
CI5510*	CI5110	1-1/4
CI5512*	CI5112	1-1/2
CI5516*	CI5116	2
CI5520*	CI5120	2-1/2
CI5524*	CI5124	3
CI5532*	CI5132	4

* cULus Listed only
Concrete-tight

CI5164 / CI5168



Cat. No.	Trade Size (in.)	
	EMT	Rigid
EMT / Rigid Couplings (Zinc Alloy)		
CI5164	1/2	1/2
CI5166	3/4	3/4
CI5168	1	1

Concrete-tight

TK121A-FA



Cat. No.	Trade Size (in.)	Std. Pkg. Qty
EMT / Fire Alarm Set Screw Couplings (Red Steel)		
TK121A-FA	1/2	50
TK122A-FA	3/4	50
TK123A-FA	1	25

EMT

Compression Fittings and Couplings

- Models from 2-1/2 to 4 in. are also suitable for rigid and IMC conduit



TC111A



TC711A



Cat. No.		Trade Size (in.)
Regular	Insulated	
EMT Compression Fittings (Zinc-plated steel)		
TC111A	TC711A	1/2
TC112A	TC712A	3/4
TC113A	TC713A	1
TC114A*	TC714A	1-1/4
TC115A*	TC715A	1-1/2
TC116A*	TC716A	2
TC117A	TC717A	2-1/2
TC118A	TC718A	3
TC119A	TC719A	3-1/2
TC1110A	TC7110A	4

UL FILE NO. E-16592. * O-rings are supplied.
Concrete-tight.



TK111A



Cat. No.	Trade Size (in.)
EMT Compression Couplings (Zinc-plated steel)	
TK111A	1/2
TK112A	3/4
TK113A	1
TK114A	1-1/4
TK115A	1-1/2
TK116A	2
TK117A	2-1/2
TK118A	3
TK119A	3-1/2
TK1110A	4

UL FILE NO. E-16592.
Concrete-tight.

CI5804 (-IT) / CI5832 (-IT)



Zinc Die Cast Locknut
IT: with insulated throat



Cat. No.		Trade Size (in.)
Regular	Insulated	
EMT Compression Fittings (Zinc Alloy)		
CI5804	CI5804-IT	1/2
CI5806	CI5806-IT	3/4
CI5808	CI5808-IT	1
CI5810	CI5810-IT	1-1/4
CI5812	CI5812-IT	1-1/2
CI5816	CI5816-IT	2
CI5820	CI5820-IT	2-1/2
CI5824	CI5824-IT	3
CI5832	CI5832-IT	4

Concrete-tight.

CI5904 / CI5932



Cat. No.	Trade Size (in.)
EMT Compression Couplings (Zinc Alloy)	
CI5904	1/2
CI5906	3/4
CI5908	1
CI5910	1-1/4
CI5912	1-1/2
CI5916	2
CI5920	2-1/2
CI5924	3
CI5932	4

Concrete-tight.

EMT

Wet-location fittings



CI5612-IT-WL



CI5706-WL



CI5620-WL

Specifications

Material: Steel body and steel locknut

Finish: Electro zinc plated

Liner (insulated fittings only): Nylon

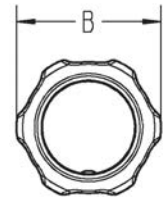
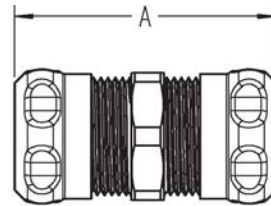
Threads: Hub threads (NPS)

Sealing Gasket: Neoprene

Sealing Ring: Nylon

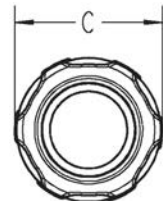
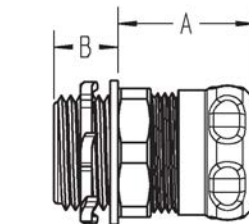
Use: Wet locations, concrete-tight

UL Listed Raintight (File E-16592)
UL514B / CSAC22.2-N°18.3
NEMA FB-1
NEMA 3R



Wet-location EMT compression fittings

Cat. No.	Hub Size (in.)	Dimensions (in.)			Std. Ctn.
		A	B	C	
Non-insulated					
CI5604-WL	½	1.22	0.47	1.14	100
CI5606-WL	¾	1.21	0.48	1.38	50
CI5608-WL	1	1.30	0.50	1.67	25
CI5610-WL	1-¼	1.50	0.60	2.06	25
CI5612-WL	1-½	1.53	0.65	2.27	20
CI5616-WL	2	1.67	0.73	2.77	10
CI5620-WL	2-½	2.77	0.87	3.65	5
CI5624-WL	3	2.75	0.87	4.30	5
CI5632-WL	4	3.12	0.92	5.23	5
Insulated					
CI5604-IT-WL	½	1.22	0.54	1.14	100
CI5606-IT-WL	¾	1.21	0.55	1.38	50
CI5608-IT-WL	1	1.30	0.57	1.67	25
CI5610-IT-WL	1-¼	1.50	0.69	2.06	25
CI5612-IT-WL	1-½	1.53	0.74	2.27	20
CI5616-IT-WL	2	1.67	0.82	2.77	10
CI5620-IT-WL	2-½	2.77	0.99	3.65	5
CI5624-IT-WL	3	2.75	0.99	4.30	5
CI5632-IT-WL	4	3.12	1.04	5.23	5



Wet-location EMT compression couplings

Cat. No.	Hub Size (in.)	Dimensions (in.)			Std. Ctn.
		A	B	C	
CI5704-WL	½	1.94	1.14	–	100
CI5706-WL	¾	2.09	1.38	–	50
CI5708-WL	1	2.31	1.67	–	25
CI5710-WL	1-¼	2.58	2.06	–	25
CI5712-WL	1-½	2.74	2.27	–	20
CI5716-WL	2	2.83	2.77	–	10
CI5720-WL	2-½	4.47	3.65	–	5
CI5724-WL	3	4.70	4.30	–	5
CI5732-WL	4	5.75	5.23	–	5

EMT

Accessories



CI1304 / CI1316



CI1404 / CI1416



CI1520 / CI1532



Cat. No.	Trade Size (in.)	Max. EMT Dia. (in.)	Hole Size (in.)
One Hole EMT Straps (Galvanized Steel)			
CI1304	1/2	0.71	1/4
CI1306	3/4	0.92	1/4
CI1308	1	1.16	5/16
CI1310	1-1/4	1.51	7/16
CI1312	1-1/2	1.74	7/16
CI1316	2	2.20	9/16
Two Hole EMT Straps (Galvanized Steel)			
CI1404	1/2	0.71	3/16
CI1406	3/4	0.92	3/16
CI1408	1	1.16	3/16
CI1410	1-1/4	1.51	1/4
CI1412	1-1/2	1.74	1/4
CI1416	2	2.20	3/8
CI1520	2-1/2	2.88	3/8
CI1524	3	3.50	3/8
CI1528	3-1/2	4.00	1/2
CI1532	4	4.50	1/2

CI5153



CI5154



Cat. No.	Trade Size (in.)		Clamping Range (in.)	
	EMT	Flex.	Min.	Max.
EMT / Flex Couplings (Zinc Alloy)				
CI5153	1/2	3/8	0.17	0.63
CI5154	1/2	1/2	0.75	0.95

CI7538



Cat. No.	Max. Flex. Conduit Dia. (in.)	Hole Size (in.)
One Hole Double Sided Strap (Galvanized Steel)		
CI7538*	1.05	3/16

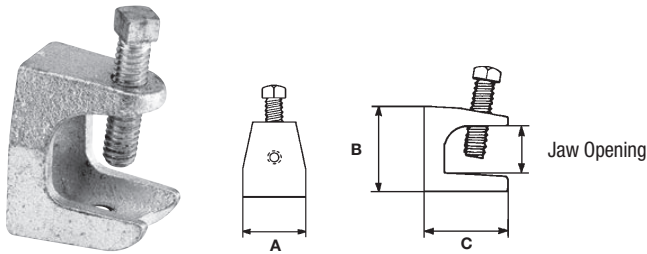
*Any combination of 3/8 in., 1/2 in. and 3/4 in. EMT, rigid conduit, flexible conduit or teck cables

EMT

Accessories



500-SC / 503-SC



Cat. No.	Trade Size (in.)	Jaw Opening (in.)	Tap Base and Back	Dimensions (in.)		
				A	B	C
Beam Clamps (Malleable Iron)						
500-SC	1/4NC	15/16	1/4-20	1	1-1/4	1-7/16
501	5/16NC	7/8	5/16-18	1-9/16	1-9/16	1-11/16
502	3/8NC	1	3/8-16	2	1-7/8	1-3/4
503-SC	1/2NC	1	1/2-13	2-1/2	2-3/8	2-3/8

CICH-0404 / CICH-3232



Cat. No.	Trade Size (in.)	
	EMT	Rigid
Conduit Hangers-Steel (with nuts & bolts)		
CICH-0404	1/2	1/2
CICH-0606	3/4	3/4
CICH-0808	1	1
CICH-0010	1-1/4	—
CICH-1012	1-1/2	1-1/4
CICH-1200	—	1-1/2
CICH-1616	2	2
CICH-2020	2-1/2	2-1/2
CICH-2424	3	3
CICH-2828	3-1/2	3-1/2
CICH-3232 *	4	4

* Not CSA certified

EMT

Pull Elbows and Conduit Fittings



CI5204 / CI5206



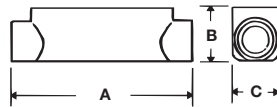
Zinc Die Cast Locknut

CI5304 / CI5306 / CI5308-G / CI5310-G

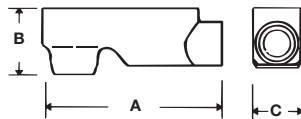


-G: with gasket.

CICA-1/2 / CICA-2



CILBA-1/2 / CILBA-2 / CILBSA-2-1/2 / CILBSA-4



Cat. No.	Trade Size (in.)	Dimensions (in.)		
		A	B	C
Pull Elbows, EMT to Box (Zinc Alloy)				
CI5204	1/2	1-5/16	1-1/8	—
CI5206	3/4	1-1/2	1-1/4	—
Pull Elbows, EMT to EMT (Zinc Alloy)				
CI5304	1/2	1-5/16	15/16	—
CI5306	3/4	1-5/8	1-1/4	—
CI5308-G	1	1-15/16	1-5/8	—
CI5310-G	1-1/4	2-1/4	2	—
EMT Conduit Fittings - "C" Type (Cast Aluminum)				
CICA-1/2	1/2	4-7/8	1-3/8	1-3/8
CICA-3/4	3/4	5-9/16	1-1/2	1-7/16
CICA-1	1	6-1/2	1-3/4	1-3/4
CICA-1-1/4	1-1/4	8-5/8	1-15/16	2-1/2
CICA-1-1/2	1-1/2	8-5/8	2-11/16	2-1/2
CICA-2	2	10-15/16	3	3-3/16
EMT Conduit Fittings - "LB" Type (Cast Aluminum)				
CILBA-1/2	1/2	4-5/16	1-1/2	1-3/8
CILBA-3/4	3/4	4-15/16	1-7/8	1-9/16
CILBA-1	1	6-1/16	2-1/16	1-13/16
CILBA-1-1/4	1-1/4	7-7/8	2-15/16	2-1/2
CILBA-1-1/2	1-1/2	7-7/8	3-1/16	2-1/2
CILBA-2	2	10	3-3/4	3-3/16
CILBSA-2-1/2 *	2-1/2	13	7-3/8	4-1/4
CILBSA-3 *	3	13	7-3/8	4-1/4
CILBSA-3-1/2 *	3-1/2	15-1/4	9	5-1/4
CILBSA-4 *	4	15-1/4	9	5-1/4

Covers and gaskets are included with all aluminum conduit fittings
 Types CICA and CILBA are also suitable for use with rigid conduit (NPSM threads)
 * For EMT only, not threaded

EMT

Conduit Fittings, Accessories and Entrance Heads

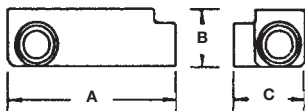


CILRL-1/2 / CILRL-2



Combined LL/LR
Left and right
application

CITA-1/2 / CITA-2



Cat. No.	Trade Size (in.)	Dimensions (in.)		
		A	B	C
EMT Conduit Fittings - "LRL" Type (Cast Aluminum)				
CILRL-1/2	1/2	4-7/16	1-11/16	2-1/8
CILRL-3/4	3/4	5-3/16	1-7/8	2-1/4
CILRL-1	1	6	2-3/16	2-1/2
CILRL-1-1/4	1-1/4	7-15/16	2-3/4	3-1/2
CILRL-1-1/2	1-1/2	7-15/16	3-1/4	3-1/2
CILRL-2	2	10-3/16	3-11/16	4-1/8
EMT Conduit Fittings - "T" Type (Cast Aluminum)				
CITA-1/2	1/2	4-7/8	1-3/8	2-1/16
CITA-3/4	3/4	5-9/16	1-3/4	2-1/8
CITA-1	1	6-1/2	2	2-1/2
CITA-1-1/4	1-1/4	8-11/16	2-5/8	3-1/2
CITA-1-1/2	1-1/2	8-11/16	3	3-9/16
CITA-2	2	10-7/8	3-1/4	4-3/16

Covers and gaskets are included with all aluminum conduit fittings
Types CILRL and CITA are also suitable for use with rigid conduit (NPSM Threads)



CIBC-1/2 / CIBC-2



Cat. No.	Gros. nom. (in.)
Blank Covers for Aluminum Conduit Fittings (Stamped Aluminum)	
CIBC-1/2	1/2
CIBC-3/4	3/4
CIBC-1	1
CIBC-1-1/4	1-1/4
CIBC-2	2

For 1-1/2, use CIBC-1-1/4
Screws not included



CIG-1/2 / CIG-2



Cat. No.	Trade Size (in.)
Gaskets for Aluminum Conduit Fittings (Neoprene)	
CIG-1/2	1/2
CIG-3/4	3/4
CIG-1	1
CIG-1-1/4	1-1/4
CIG-2	2

For 1-1/2, use CIG-1-1/4

CIEFSA-1/2 / CIEFSA-4



Cat. No.	Trade Size (in.)
Service Entrance Heads (Cast Aluminum)	
CIEFSA-1/2	1/2
CIEFSA-3/4	3/4
CIEFSA-1	1
CIEFSA-1 1/4	1-1/4
CIEFSA-1 1/2	1-1/2
CIEFSA-2	2
CIEFSA-2 1/2	2-1/2
CIEFSA-3	3
CIEFSA-3 1/2	3-1/2
CIEFSA-4	4

Consult page D10 for technical specifications

