



Inscription plate for illuminated pushbutton, round, milky, without inscription, for self-labeling

<b>product brand name</b>	SIRIUS ACT		
<b>product designation</b>	Insert label		
<b>product type designation</b>	3SU1		
<b>General technical data</b>			
shock resistance for railway applications according to EN 61373	Category 1, Class B		
vibration resistance for railway applications according to EN 61373	Category 1, Class B		
<b>Substance Prohibittance (Date)</b>	10/01/2014		
<b>Weight</b>	1 g		
<b>Ambient conditions</b>			
<b>ambient temperature</b>			
• during operation	70 ... -25 °C		
• during storage and transport	80 ... -40 °C		
<b>Environmental footprint</b>			
Environmental Product Declaration (EPD)	Yes		
global warming potential [CO2 eq] total	0.787 kg		
global warming potential [CO2 eq] during manufacturing	0.566 kg		
global warming potential [CO2 eq] during operation	0.235 kg		
global warming potential [CO2 eq] after end of life	-0.015 kg		
<b>Accessories</b>			
<b>material of accessory</b>	Plastic		
<b>fastening method of label</b>	insert		
<b>marking of inscription plate</b>	none		
<b>shape of inscription plate</b>	Round		
<b>color of inscription plate</b>	milky (plate); black (text)		
<b>Approvals Certificates</b>			
General Product Approval	Test Certificates	other	



[Type Test Certificates/Test Report](#)

[Confirmation](#)

Environment



Siemens EcoTech



[Environmental Confirmations](#)

## Further information

### Information on the packaging

<https://support.industry.siemens.com/cs/ww/en/view/109813875>

### Information- and Downloadcenter (Catalogs, Brochures,...)

<https://www.siemens.com/ic10>

### Industry Mall (Online ordering system)

<https://mall.industry.siemens.com/mall/en/en/Catalog/product?mlfb=3SU1900-0AB71-0AA0>

### Cax online generator

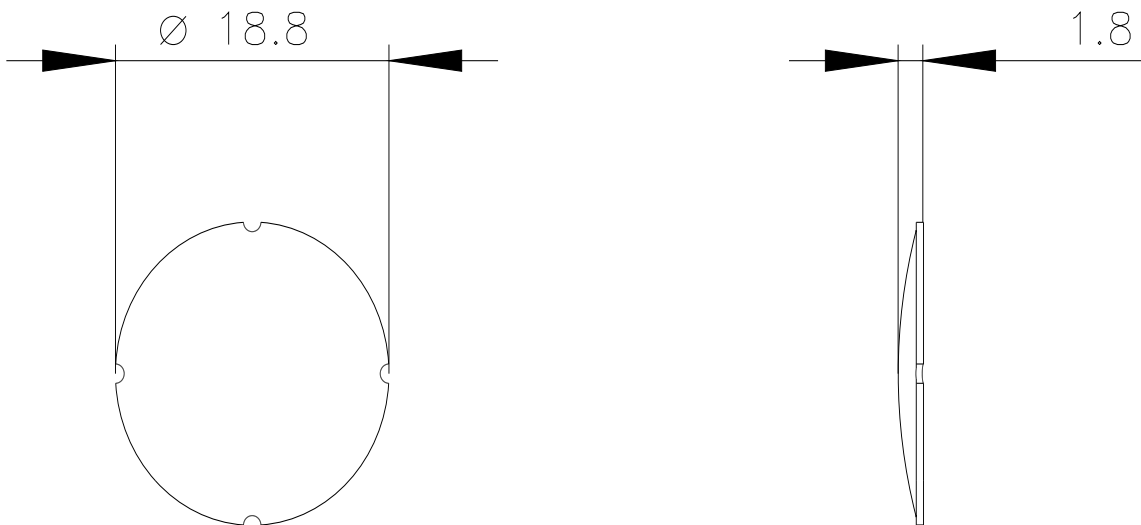
<http://support.automation.siemens.com/WW/CAXorder/default.aspx?lang=en&mlfb=3SU1900-0AB71-0AA0>

### Service&Support (Manuals, Certificates, Characteristics, FAQs,...)

<https://support.industry.siemens.com/cs/ww/en/ps/3SU1900-0AB71-0AA0>

### Image database (product images, 2D dimension drawings, 3D models, device circuit diagrams, EPLAN macros, ...)

[http://www.automation.siemens.com/bilddb/cax\\_de.aspx?mlfb=3SU1900-0AB71-0AA0&lang=en](http://www.automation.siemens.com/bilddb/cax_de.aspx?mlfb=3SU1900-0AB71-0AA0&lang=en)



last modified:

4/2/2025 