



Continuous light element, with integrated LED, green, 24 V AC/DC, Diameter 50 mm

product brand name	SIRIUS	
product designation	Continuous light element	
design of the product	including light sources	
General technical data		
type of voltage of the operating voltage	AC/DC	
operating voltage		
• 1 at DC rated value	24 V	
• 1 at AC at 50 Hz rated value	24 V	
• 1 at AC at 60 Hz rated value	24 V	
relative positive tolerance of the operating voltage	10 %	
relative negative tolerance of the operating voltage	-10 %	
consumed current maximum	30 mA	
reference code according to EN 61346-2	P	
Lamp		
product component light source	Yes	
type of light source	LED	
service life of LED	100 000 h	
design of the optical signal	continuous light	
light intensity	1.62 cd	
light intensity	0.98 ... 2.34 cd	
Enclosure		
height	67 mm	
width	52 mm	
outer diameter of the signal column element	50 mm	
material	PC	
color	green	
fastening method	Bayonet	
protection class IP	IP54	
Ambient conditions		
ambient temperature during operation	-20 ... +50 °C	
Approvals Certificates		
General Product Approval	other	Environment



[Confirmation](#)

[Environmental Confirmations](#)

Further information

Information on the packaging

<https://support.industry.siemens.com/cs/ww/en/view/109813875>

Information- and Downloadcenter (Catalogs, Brochures,...)

<https://www.siemens.com/ic10>

Industry Mall (Online ordering system)

<https://mall.industry.siemens.com/mall/en/en/Catalog/product?mlfb=8WD4220-5AC>

Cax online generator

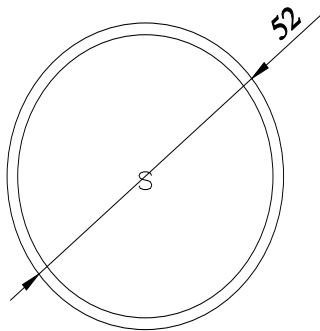
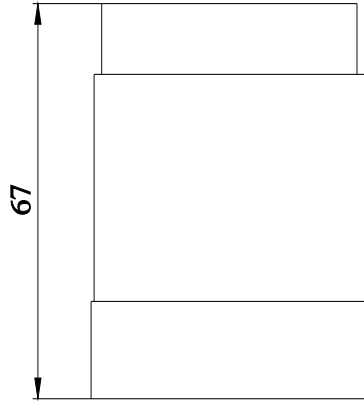
<http://support.automation.siemens.com/WW/CAXorder/default.aspx?lang=en&mlfb=8WD4220-5AC>

Service&Support (Manuals, Certificates, Characteristics, FAQs,...)

<https://support.industry.siemens.com/cs/ww/en/ps/8WD4220-5AC>

Image database (product images, 2D dimension drawings, 3D models, device circuit diagrams, EPLAN macros, ...)

http://www.automation.siemens.com/bilddb/cax_de.aspx?mlfb=8WD4220-5AC&lang=en



-P



last modified:

4/1/2025 