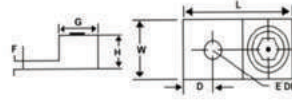


## ALUMINIUM SINGLE BARREL CONNECTORS – ONE HOLE MOUNT

- Made of high strength aluminium - 6061-T6
- Used for copper and or aluminium conductors.
- Electro - Tin plated for low contact resistance and protection against corrosion.
- Connectors are re-usable.
- cULus 486B listed
- Rated 600 volts / 90°C

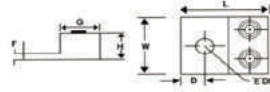


PART NO	CONDUCTOR RANGE		DIMENSION IN INCHES				
	MIN	MAX	L	W	D	E	BOLT HOLE
LA6	14 AWG	4 STR	1.10	0.50	0.23	0.09	1/4
LA2	14 AWG	2 STR	1.16	0.50	0.30	0.11	1/4
LA1/0	14 AWG	1/0 STR	1.46	0.63	0.44	0.19	1/4
LA2/0	14 AWG	2/0 STR	1.46	0.63	0.44	0.19	1/4
LA250	6 STR	250 KCMIL	2.00	0.86	0.50	0.25	5/16
LA350	6 STR	350 KCMIL	2.25	1.25	0.50	0.25	3/8
LA500	4 STR	500 KCMIL	2.81	1.50	0.75	0.32	3/8
LA600	2 STR	600 KCMIL	3.19	1.50	0.81	0.44	3/8
LA800	300 KCMIL	800 KCMIL	3.37	1.75	0.87	0.50	5/8
LA1000	500 KCMIL	1000 KCMIL	3.37	1.75	0.87	0.50	5/8

F

## ALUMINIUM TWO BARREL CONNECTORS – ONE HOLE MOUNT

- Made of high strength aluminium - 6061-T6
- Used for copper and or aluminium conductors.
- Electro - Tin plated for low contact resistance and protection against corrosion.
- Connectors are re-usable.
- cULus 486B listed
- Rated 600 volts / 90°C

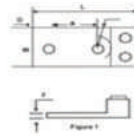


PART NO	CONDUCTOR RANGE		DIMENSION IN INCHES				
	MIN	MAX	L	W	D	E	BOLT HOLE
L2A0	14 AWG	1/0 STR	1.46	1.22	0.44	0.19	1/4
L2A2/0	14 AWG	2/0 STR	1.46	1.25	0.42	0.19	1/4
L2A250	6 STR	250 KCMIL	2.56	1.64	0.88	0.25	3/8
L2A350	6 STR	350 KCMIL	2.87	1.91	0.88	0.25	1/2
L2A600	2 STR	600 KCMIL	3.19	2.40	0.63	0.44	1/2
L2A800*	300 KCMIL	800 KCMIL	3.37	3.19	0.88	0.50	5/8
L2A1000*	500 KCMIL	1000 KCMIL	3.37	3.19	0.88	0.50	5/8

\* Not UL Listed

## ALUMINIUM TWO BARREL CONNECTORS – TWO HOLE MOUNT

- Made of high strength aluminium - 6061-T6
- Used for copper and or aluminium conductors.
- Electro - Tin plated for low contact resistance and protection against corrosion.
- Connectors are re-usable.
- cULus 486B listed
- Rated 600 volts / 90°C

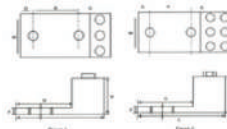


PART NO	CONDUCTOR RANGE		STUD HOLE	DIMENSION IN INCHES					
	MIN	MAX		L	W	F	D	A	FIG NO
L2A3502	6 STR	350 KCMIL	1/2	4.12	1.91	0.31	0.62	1.75	1
L2A6002	4 STR	600 MCM	1/2	5.58	2.40	0.44	0.62	1.75	2
L2A8002*	350 KCMIL	800 MCM	1/2	5.82	3.19	0.50	0.62	1.75	2

\* Not UL Listed

## ALUMINIUM THREE BARREL CONNECTORS – TWO HOLE MOUNT

- Made of high strength aluminium - 6061-T6
- Used for copper and or aluminium conductors.
- Electro - Tin plated for low contact resistance and protection against corrosion.
- Connectors are re-usable.
- cULus 486B listed
- Rated 600 volts / 90°C



PART NO	CONDUCTOR RANGE		STUD HOLE	DIMENSION IN INCHES					
	MIN	MAX		L	W	F	D	A	FIG NO
L3A2502	6 STR	250 MCM	1/2	4.12	2.83	0.31	0.62	1.75	1
L3A3502	6 STR	350 MCM	1/2	4.12	3.00	0.31	0.62	1.75	1
L3A6002	2 STR	600 MCM	1/2	5.58	3.75	0.44	0.62	1.75	2
L3A8002*	300 MCM	800 MCM	1/2	5.82	4.50	0.50	0.62	1.75	2
L3A10002*	500 MCM	1000 MCM	1/2	5.82	4.54	0.50	0.62	1.75	2

\* Not UL Listed

## ALUMINIUM THREE BARREL CONNECTORS – FOUR HOLE MOUNT

- Made of high strength aluminium - 6061-T6
- Used for copper and or aluminium conductors.
- Electro - Tin plated for low contact resistance and protection against corrosion.
- Connectors are re-usable.
- cULus 486B listed
- Rated 600 volts / 90°C

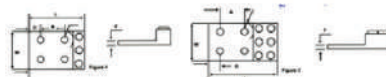


FIG. 1



FIG. 2

PART NO	CONDUCTOR RANGE		STUD HOLE	DIMENSION IN INCHES					
	MIN	MAX		L	W	F	D	A	FIG NO
L3A2504	6 STR	250 KCMIL	1/2	4.12	2.83	0.31	0.62	1.75	1
L3A3504	6 STR	350 KCMIL	1/2	4.12	3	0.31	0.62	1.75	1
L3A6004	2 STR	600 MCM	1/2	5.58	3.75	0.44	0.62	1.75	2
L3A8004*	350 KCMIL	800 MCM	1/2	5.82	4.5	0.5	0.62	1.75	2
L3A10004*	500 KCMIL	1000 MCM	1/2	5.85	4.55	0.5	0.62	1.75	2

\* Not UL Listed