

MGB-L0B-PNA-L-113615 (Order no. 113615)

Interlocking module and bus module MGB-L0...-PN with 4 control elements, 7/8" and M12 plugs

- ▶ Interlocking (without guard locking)
- ▶ With key-operated rotary switch (form V, 90°)
- ▶ 2 illuminated white pushbuttons with symbol
- ▶ Operating mode selector
- ▶ Connection via 7/8" and M12 plugs
- ▶ Pre-assembled on mounting plates
- ▶ Integrated Profinet RT switch
- ▶ Unicode



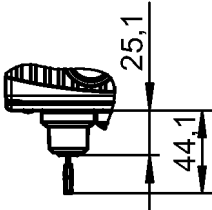
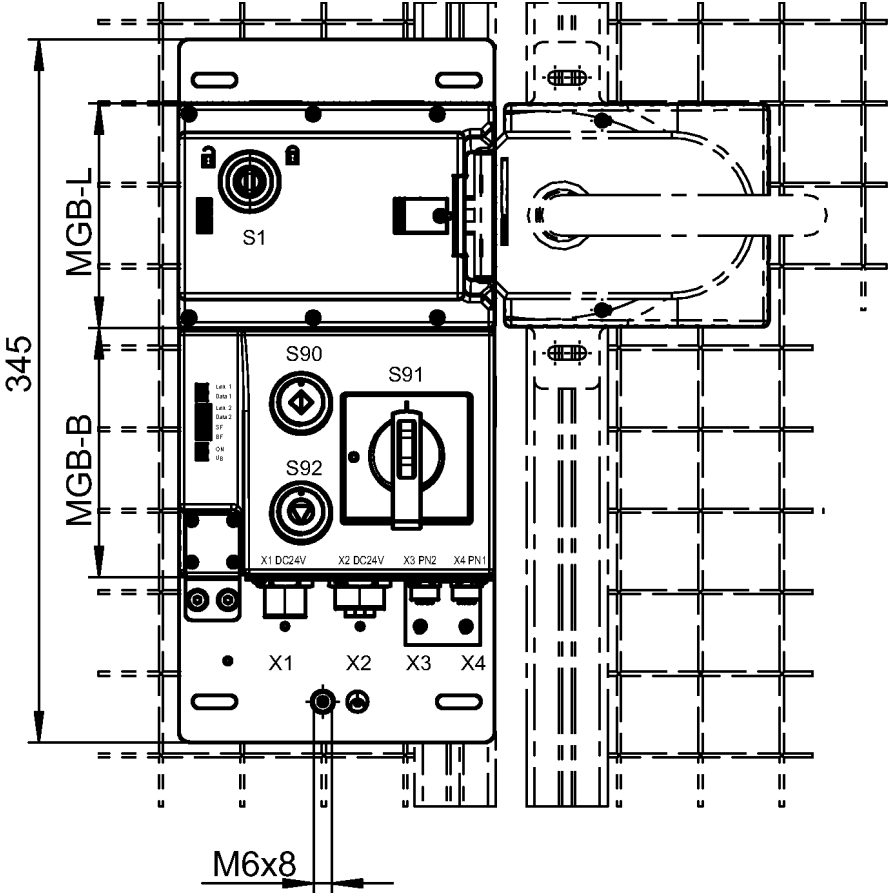
Profinet connection

7/8" plugs according to ANSI/B93.55M-1981 and M12 plugs (d-coded) according to IEC 61076-2-101

Profinet RT switch

Point-to-point topology network structure due to integrated RT switch.

Dimensional drawings



Technical data

Approvals



Workspace

Secured switch-off distance s_{ar}

Only with sliding door 20 mm

(Only applies for use on sliding doors with deactivated guard lock monitoring)

Operating and display elements

Occupancy diagram

B4

L1

Item	Color	Extras	Note slide-in label	Version	Switching element	Slide-in label	Number	Designation1	LED
1				Key-operated rotary switch	1NO				
90	white	printed		Illuminated pushbutton	1NO				
91				Operating mode selector	Code 2 of 3	0 ; 1			
92	white	printed		Illuminated pushbutton	1NO				

Electrical connection values

Connecting cable

Ethernet Profinet I/O cable, at least cat. 5e

Rated insulation voltage U_i 75 V

Rated impulse voltage U_{imp} 0.5 kV

EMC protection requirements In accordance with EN 61000-4 and EN 61326-3-1