

SN02D12-1508AM-M (Order no. 086591)

Series SN...AM, 12 mm, mechanical, with exterior diaphragm

- ▶ With exterior diaphragm
- ▶ Plunger spacing 12 mm
- ▶ Upright housing, small flange
- ▶ Degree of protection IP67 according to IEC 60529



Exterior diaphragm

The exterior diaphragm protects the plunger guide against the entry of very fine dust (dust from grinding, casting, glass, etc.) and prevents the plunger from seizing. At the same time, plunger sticking, caused by resinous lubricating coolants, can be prevented with this exterior diaphragm version.

Switching elements

ES 502 E Snap-action switching contact 1 NC + 1 NO

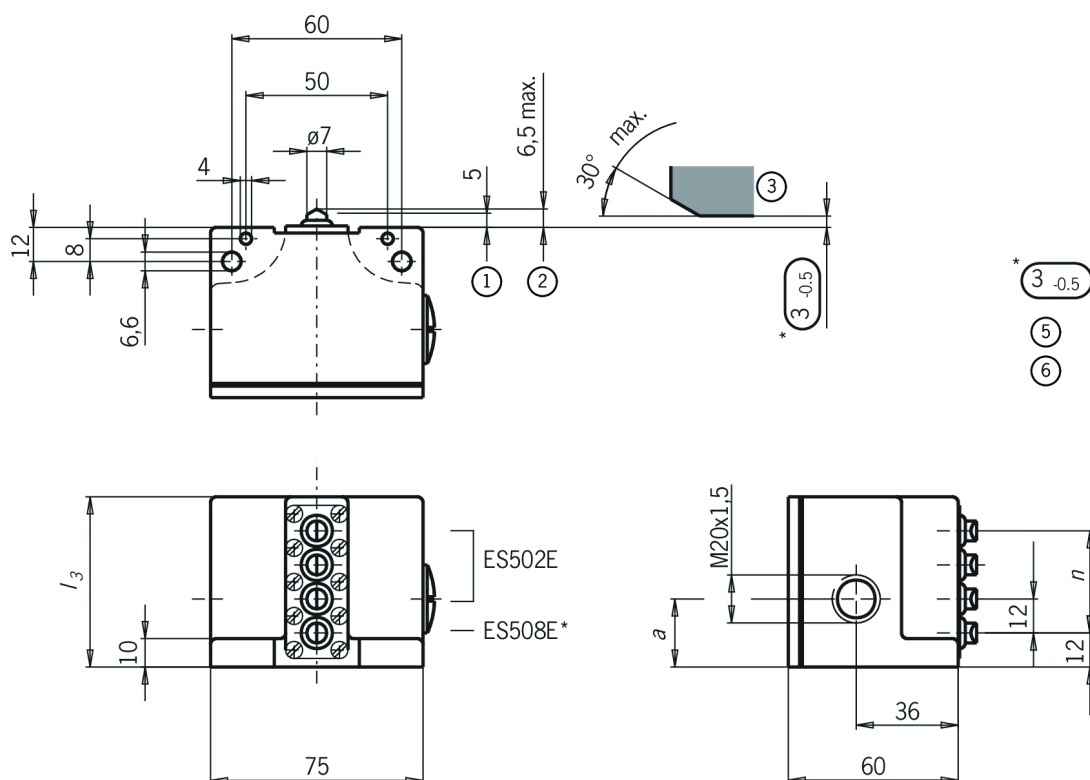
ES 508 Slow-action switching contact 1 NC →

On the usage of safety switching elements, the dog distance $\textcircled{3_{-0.5}}$ must be maintained to achieve the positively driven travel. The dogs must be positively mounted according to EN ISO 14119, i.e. riveted, welded or secured in some other way against becoming loose.

LED function display (on request)

LED function display possible on request.

Dimensional drawings



6	84	24
5	72	24
4	60	24
3	48	24
2	36	19
n Anzahl der Stöße 4	13	a

* Safety switching element ES 508E positively driven. Positive opening function is dependent on maintaining this distance.

- 1 Operating point
- 2 Free position
- 3 Dog
- 4 n Number of plungers
- 5 Actuators (dogs) must be connected to the machine in a flush position.
- 6 Switch can be replaced only with the same type.

Connection examples

ES 508

