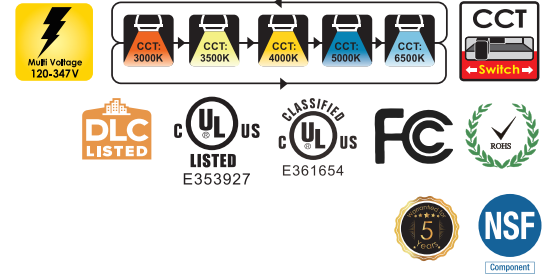


Project : _____
 Type : _____
 Drawn by : _____
 Catalogue No. : _____
 Date : _____



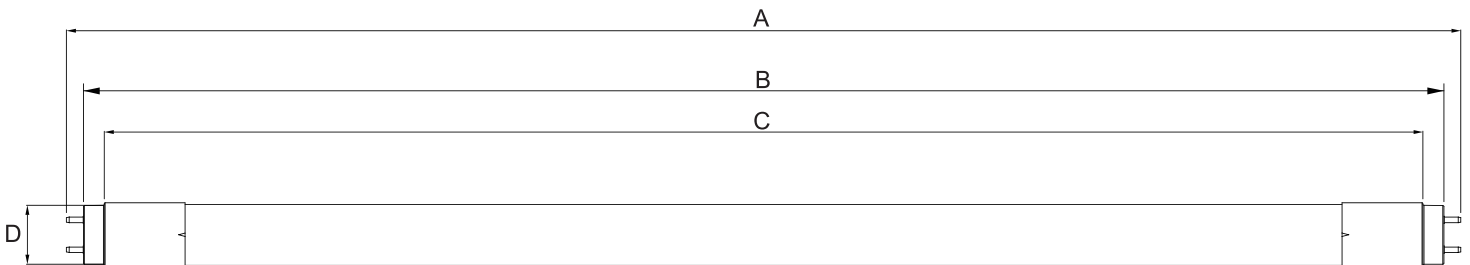
Specifications

Model No.		☐ PV-4FT-18WAB4XS(1600K)
General	Size	4'
	Watts	18W
	Target Lamp	32W
	Lumen	2250LM
	Base	G13
	CCT	3000K/3500K/4000K/5000K/6500K
	Volts	AC120-347V
	CRI	>83
	Beam Angel	200°
	Hours Rated	50,000 hours
	Max Compartment Size	Length: 47.72in Width: 1in
	Ballasting Requirements	Ballast Compatible and Ballast Bypass
Electrical	Operating Frequency	50-60 Hz
	Power Factor	>0.9
	Wiring	Any 2 pins connected
	Surge Protection	Ring Wave Surge 2.5KV
	Operating Temperature	-20°C (-4°F) to 45°C (113°F)
Physical	Housing Material	Glass with PET Coating
	Housing Color	Milky
Additional Information	Net Weight (Kg)	0.22
	Additional Info	Multi-Voltage
	Warranty	5 years
Compliance	Safety Listing	cULus
	Location Rating	Dry
	DLC Approved	under certification
	DLC ID	TBD

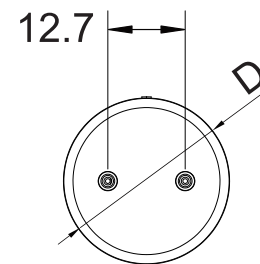
Features & Specifications

Construction	<ul style="list-style-type: none"> • Type A+B, work with ballast or AC120-347V direct power input, provides easy installation • High Compatibility: Work with 130+electronic ballasts, including emergency&dimming ballasts • Single and double-ended, any two pins connect works • 5CCT selectable, save inventory • Shatterproof design, lower the breakage rate also safe for shipping
Performance Data	<ul style="list-style-type: none"> • Available in 3000K/3500K/4000K/5000K/6500K, selectable color temperature • Electrical ratings:120-347V • Estimated life of over 100 000hours to L70 • 0-10V dimming • Operating temperature: -20°C (-4°F) to 45°C (113°F)
Compliances	<ul style="list-style-type: none"> • cULus certified • Meets NSF requirements (Splash Zone and Non Food Zone) • DLC 5.1 Standard (Under Certification)

Dimensions & Weights

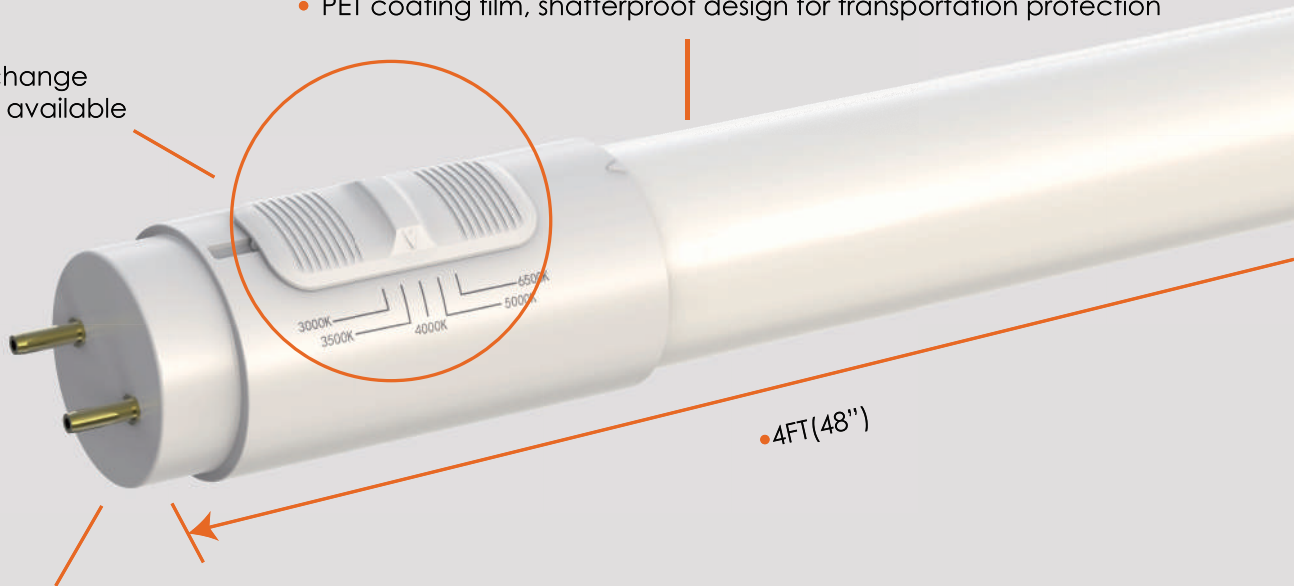


Model No.	PV-4FT-18WAB4XS(1600K)
Length A in.(mm)	47.72 (1212.0)
Length B in.(mm)	47.17 (1198.0)
Length C in.(mm)	46.5 (1181.0)
Length D in.(mm)	1.13 (28.8)
Net weight kg.(lbs)	0.22 (0.49)



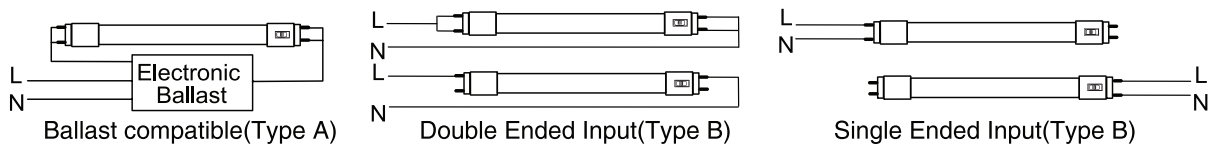
Product Details

- PET coating film, shatterproof design for transportation protection
- Big switch for change the CCT, 5CCT available



- 4FT (48")
- Single and Double-ended power input, any two pins work well, easy for wiring

Wiring Diagram



Voltage Input: AC120-347V 50/60Hz

Direct AC wiring diagram with 0 - 10V dimming system

