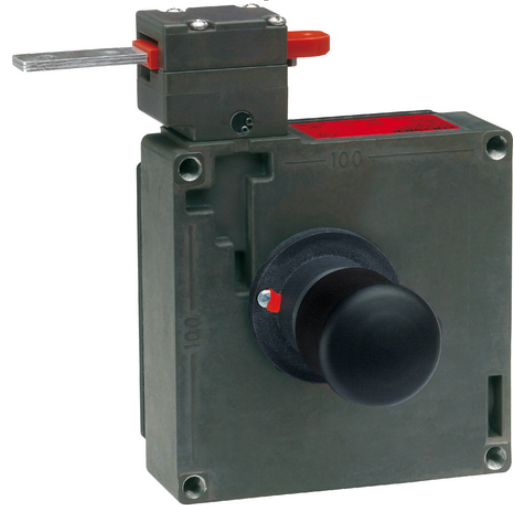


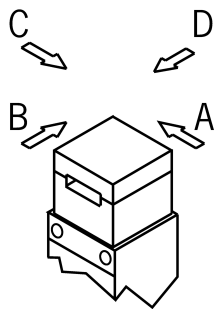
## TZ1RE110MVAB-C2082 (Order no. 095103)

### Safety switch TZ, cable entry M20 x 1.5, escape release with pushbutton

- ▶ Cable entry M20 x 1.5
- ▶ Escape release with pushbutton
- ▶ Auxiliary release
- ▶ LED indicator
- ▶ Actuating head fitted right
- ▶ Closed-circuit current principle



### Approach direction



Horizontal

Can be adjusted in 90° steps

### Guard locking principle

Power to unlock: On a guard with guard locking based on the closed-circuit current principle, the guard is locked by spring force until the guard locking solenoid is supplied with power. Unlocking is by solenoid force. The term mechanical guard locking is also used.

### LED indicator

The switch has two freely assignable LED indicators (red and green).

### Switching element

SK 2131 Slow-action switching contact

Contacts for door monitoring: 3 positively driven contacts  + 1 NO contact

ÜK 3131 Slow-action switching contact

Contacts for guard locking: 2 positively driven contacts  + 2 NO contact

## Escape release

This is used for manual release of guard locking from the danger zone without tools.

## Auxiliary release

The auxiliary release on the front makes it possible to access the machine if there is a malfunction, e.g. a power failure. Unlocking is performed using a tool or a key. The auxiliary release must be protected against misuse (sealing, lacquer).

## Accessories required

Actuator is not included.

## Functional drawings

