

SN04R12-514-MC1962 (Order no. 086419)

Series SN... 12 mm, mechanical

- ▶ Plunger spacing 12 mm
- ▶ Upright housing, small flange
- ▶ Degree of protection IP67 according to IEC 60529

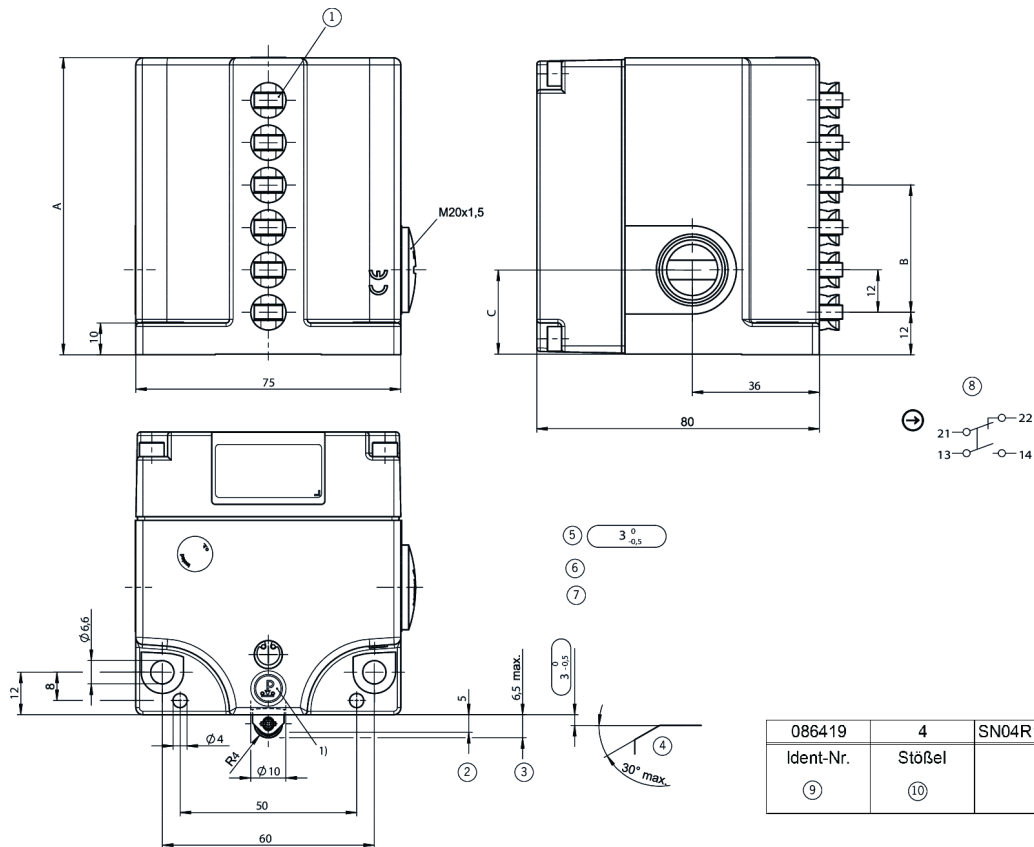


Switching elements

ES 514 Snap-action switching contact 1 NC \rightarrow + 1 NO

On the usage of safety switching elements, the dog distance $\textcircled{3-0.5}$ must be maintained to achieve the positively driven travel. The dogs must be positively mounted according to EN ISO 14119, i.e. riveted, welded or secured in some other way against becoming loose.

Dimensional drawings



086419	4	SN04R12-514-MC 1962	60	36	24
Ident-Nr.	Stößel	Typ	A	B	C
(9)	(10)	(11)			

1 Roller plunger with ball bearings + soft spring

1) Pressure sensitive label 041734 applied.

10 Number of plungers

11 Type

2 Operating point

3 Free position

4 Dog

5 Safety switching element ES514 positive opening. Positive opening function is dependent on maintaining this distance.

6 Actuators (dogs) must be connected to the machine in a flush position.

7 Switch can be replaced only with the same type.

8 Switching element ES514 with snap-action function: 1 NO contact and 1 positively driven NC contact with double gap and electrically isolated switching bridge.

9 ident no.

Connection examples

ES 514

