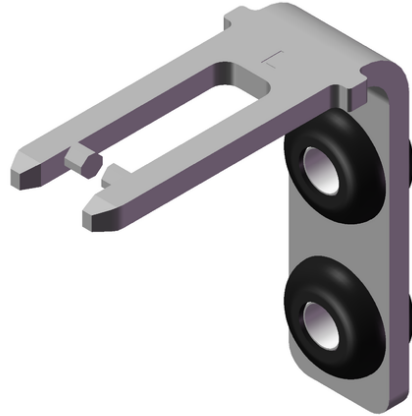


BETAETIGER-P-WNT (Order no. 074577)

Bent actuator for safety switch NP/GP/TP, increased overtravel

- ▶ Actuator made of stainless steel
- ▶ Two stainless-steel safety screws per actuator
- ▶ Actuator with rubber bush



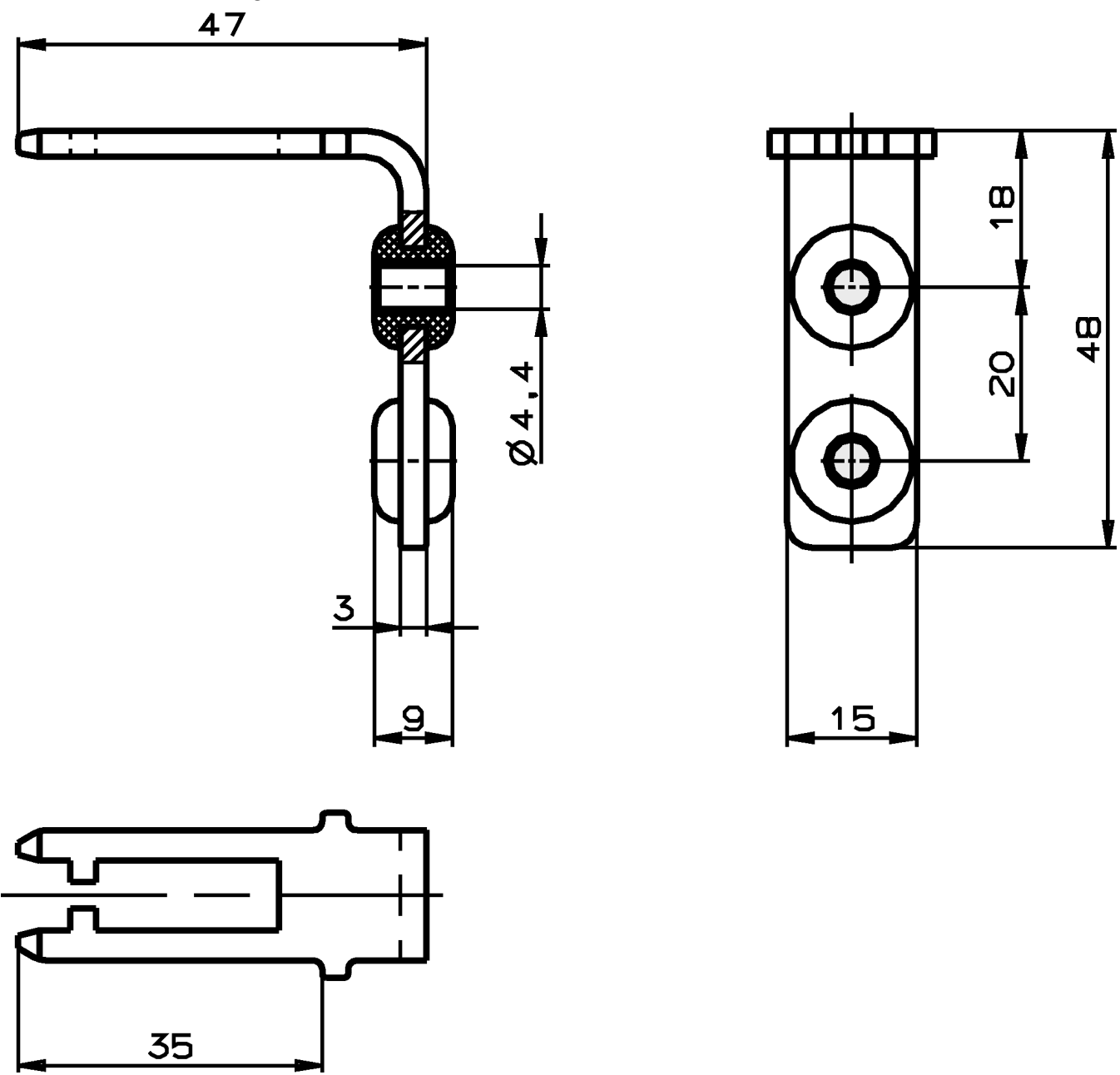
Actuator with rubber bush

For flexible mounting of the actuator.

Screws made of stainless steel

The safety screws included can be inserted with a normal tool, but cannot be removed again.

Dimensional drawings



Technical data

Mechanical values and environment

Storage temperature	-25 ... 70 °C		
Overtravel	max. 7 mm		
Door radius	min. 1000 mm		
Material			
	Actuator	Stainless steel	
	Rubber bush	NBR	
	Screw	Stainless steel	

Miscellaneous

Usability of insertion funnel	Yes		
-------------------------------	-----	--	--