

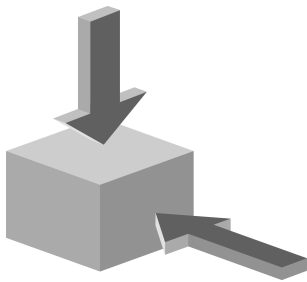
## STP3A-2131A024MC1743 (Order no. 111064)

### Safety switch STP with door monitoring contact, escape release

- ▶ Actuating head made of metal
- ▶ Escape release on the rear side
- ▶ With door monitoring contact



#### Approach direction



Horizontal and vertical  
Can be adjusted in 90° steps

#### Solenoid operating voltage

- ▶ AC/DC 24 V +10%, -15%

#### Guard locking type

STP3 Closed-circuit current principle, guard locking by spring force. Release by applying voltage to the guard locking solenoid.

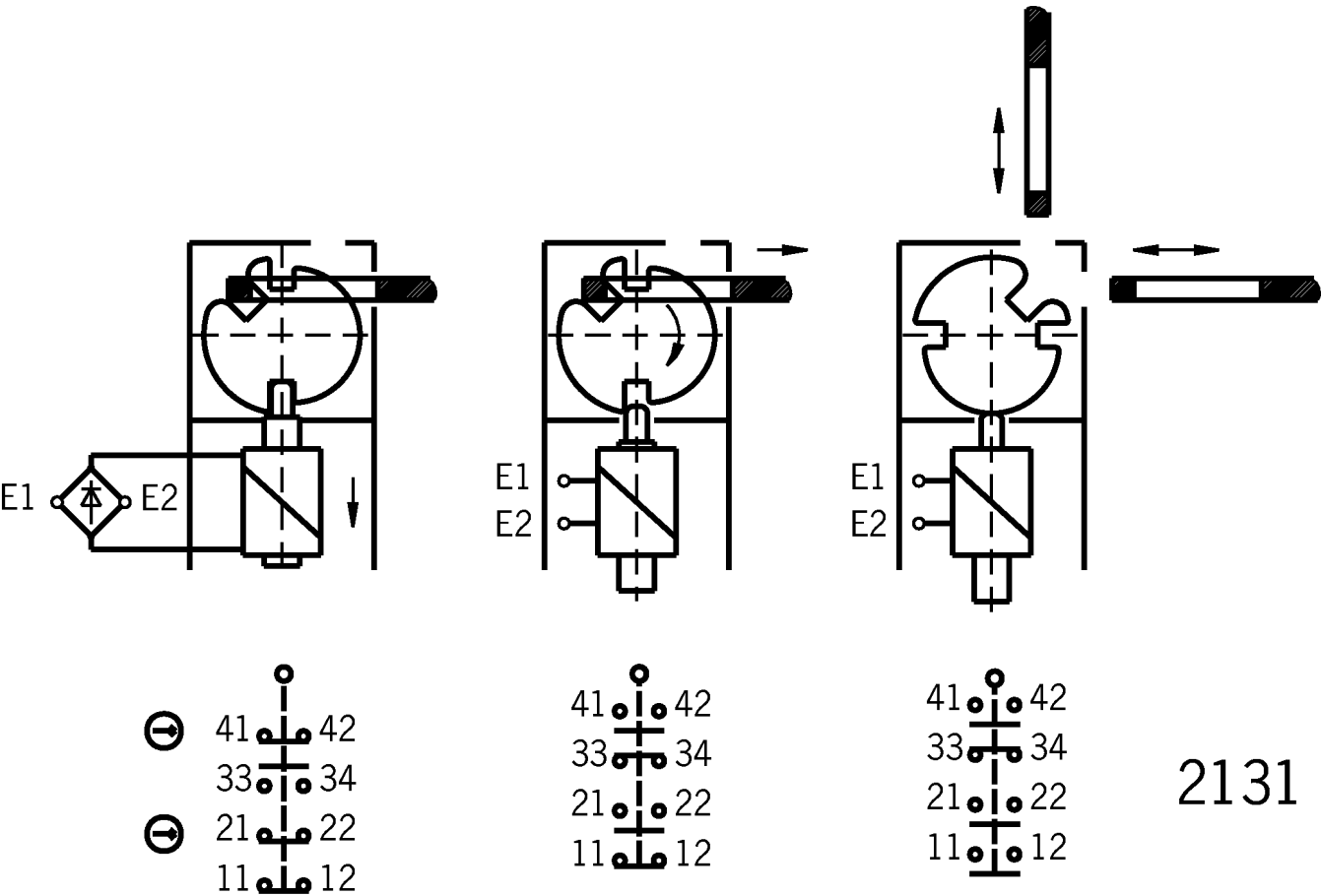
#### Switching element

2131 Slow-action switching contact 2 NC  $\ominus$  + 1 NO + 1 NC (door monitoring contact)

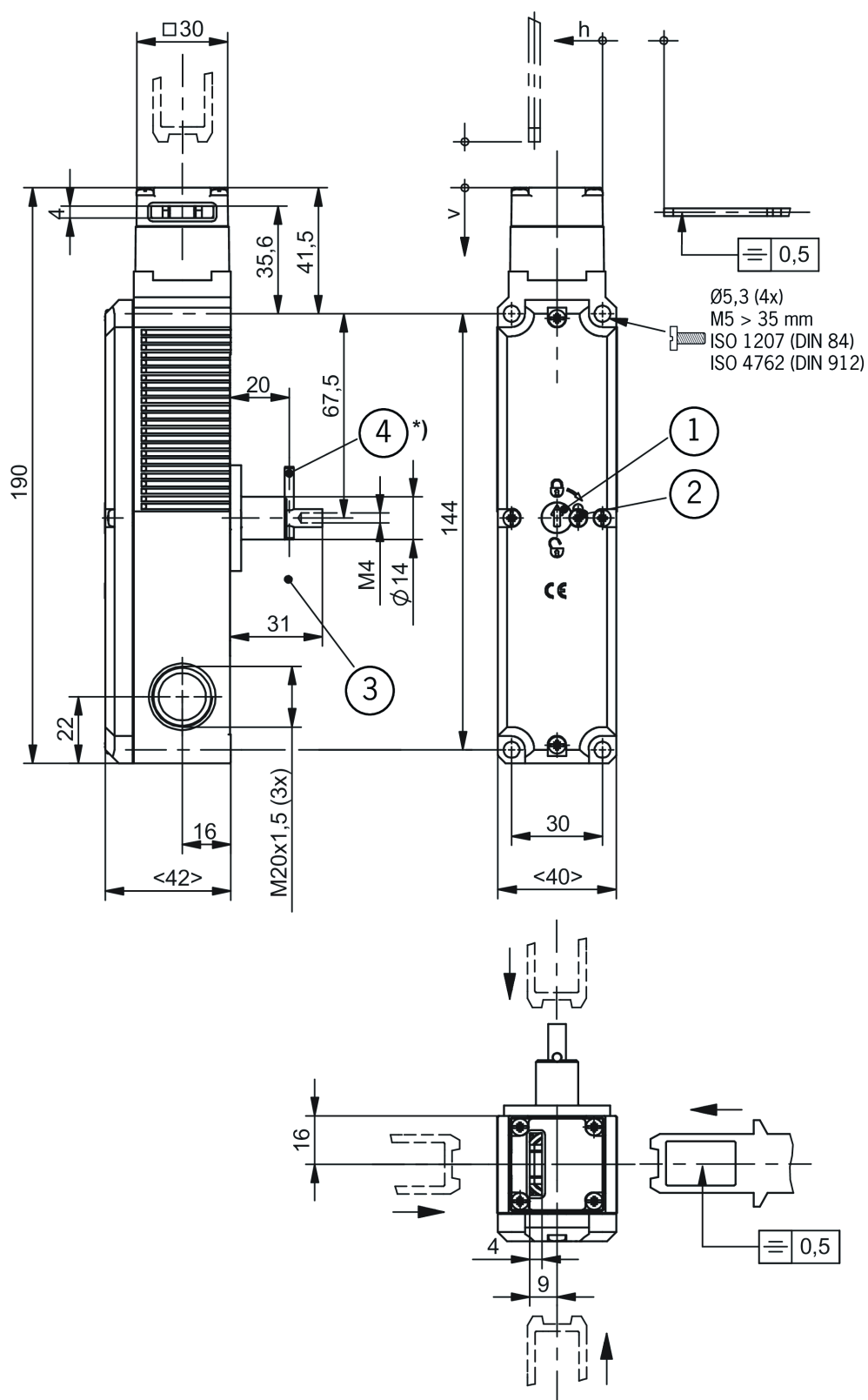
#### Escape release (C1743, short actuator shaft)

This is used for manual release of guard locking from the danger zone without tools. With identification of On/Off position.

Functional drawings



## Dimensional drawings



\*) Basic position = ready to lock, unlock by turning by 180° (actuator must not be under tensile load)

- 1 Auxiliary release
- 2 Locking screw
- 3 Unlocked
- 4 Escape release (basic position) \*)