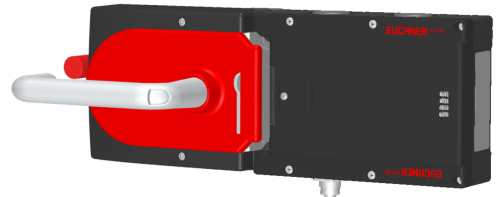


MGB-L1HE-ARA-L-111534 (Order no. 111534)

Locking set MGB-L1HE-ARA... (guard locking by spring force) without control or indicator, M12

- ▶ Guard locking with guard lock monitoring
- ▶ Can be connected in series with other AR devices (e.g. CES-AR and CET-AR)
- ▶ With plug connector M12
- ▶ With escape release
- ▶ Unicode



Guard locking type

MGB- The locking arm is held in the locked position by spring force and is unlocked by solenoid force
L1... (closed-circuit current principle, mechanically locked).

Door hinge

A mechanical door stop is permanently integrated into the evaluation module of the MGB. A marking on the stop makes adjustment easier.

LED indicator

The LED indicator indicates all important system and status information.

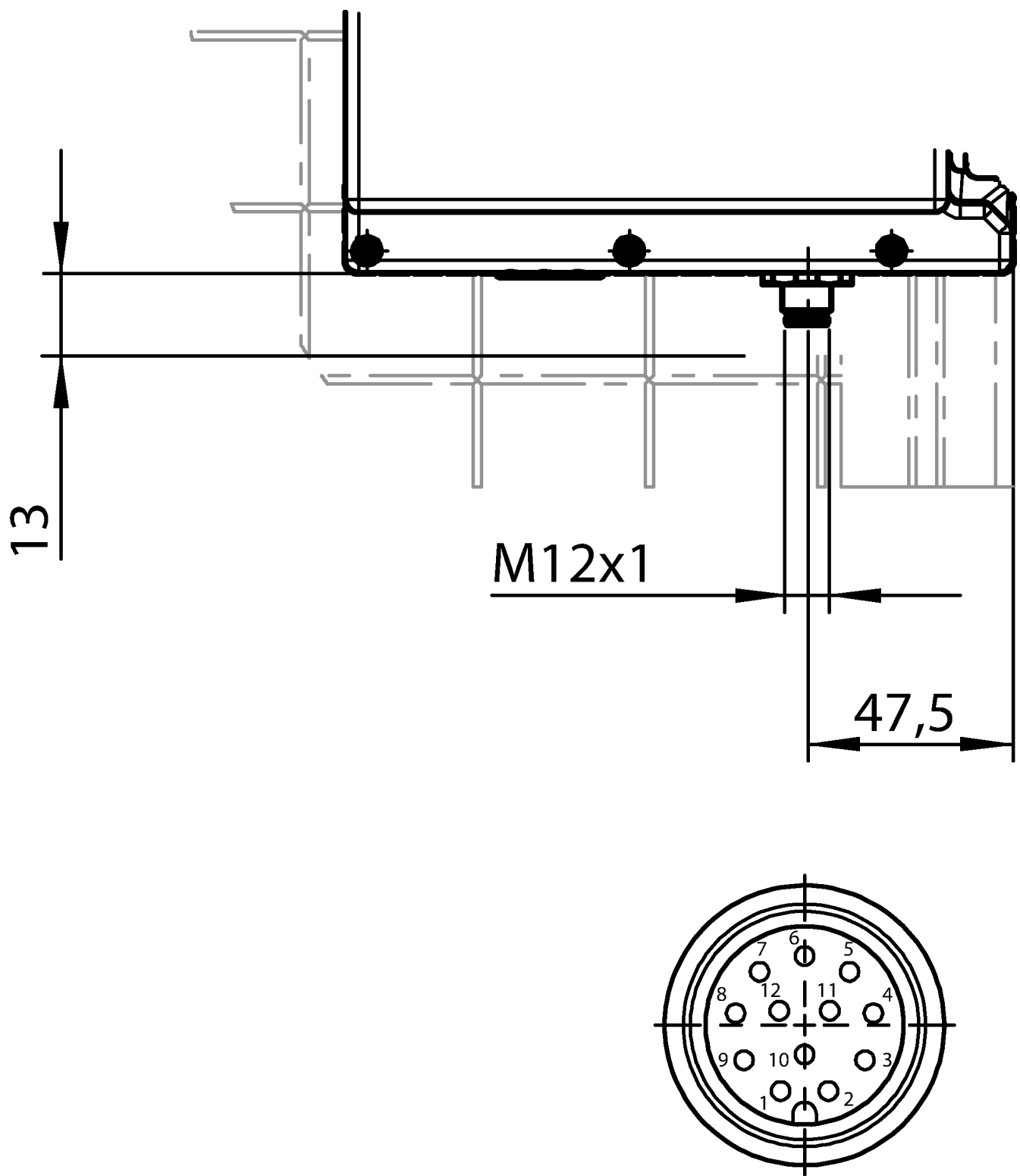
Monitoring outputs

- OD ON when the door is closed
- OT Bolt tongue inserted into the evaluation module
- OL Guard locking solenoid in locked position
- OI Diagnostics; there is a fault

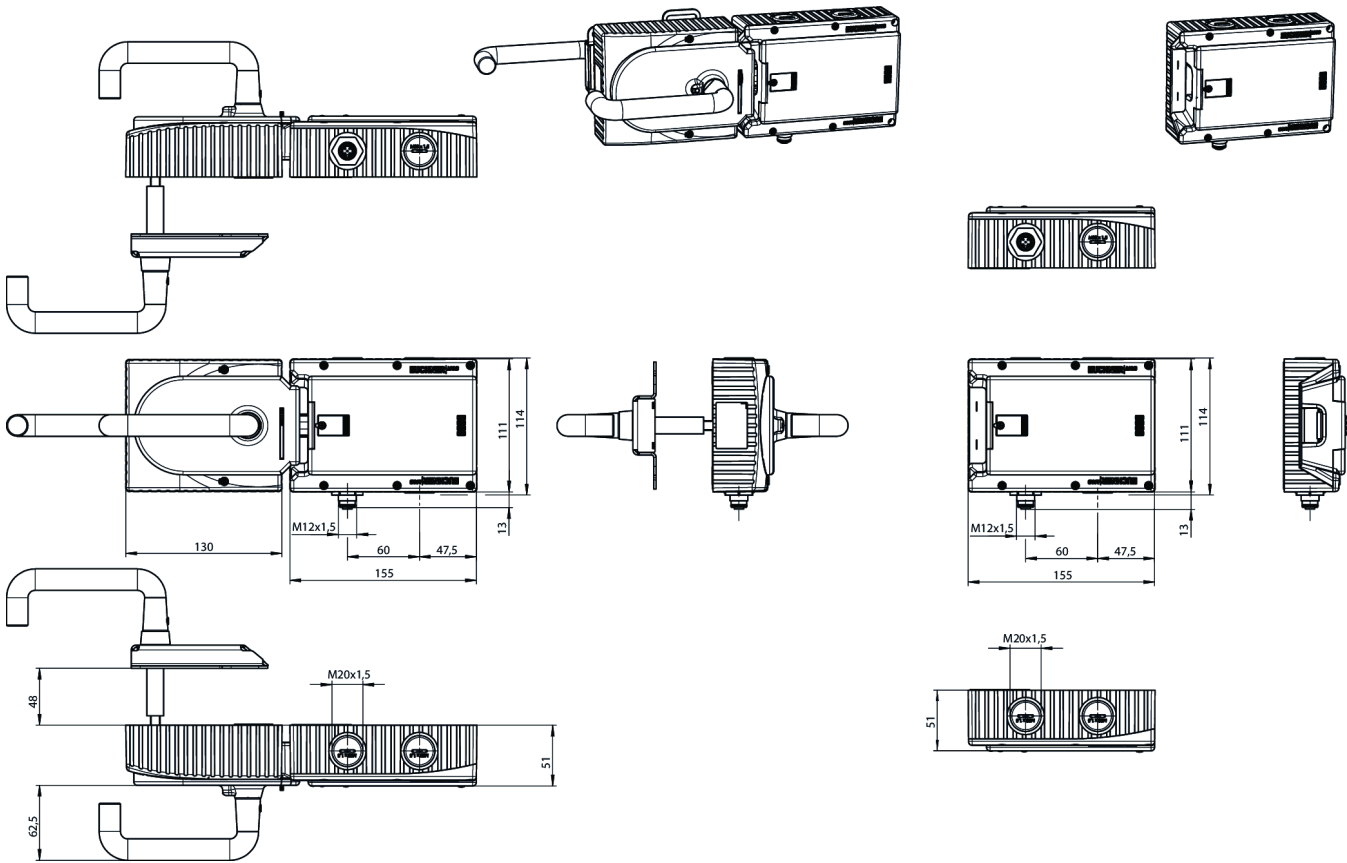
Escape release

The escape release enables people accidentally shut in to open the guard locked door from the danger zone.

Dimensional drawings



Dimensional drawings



Connection examples

