

Series WK...

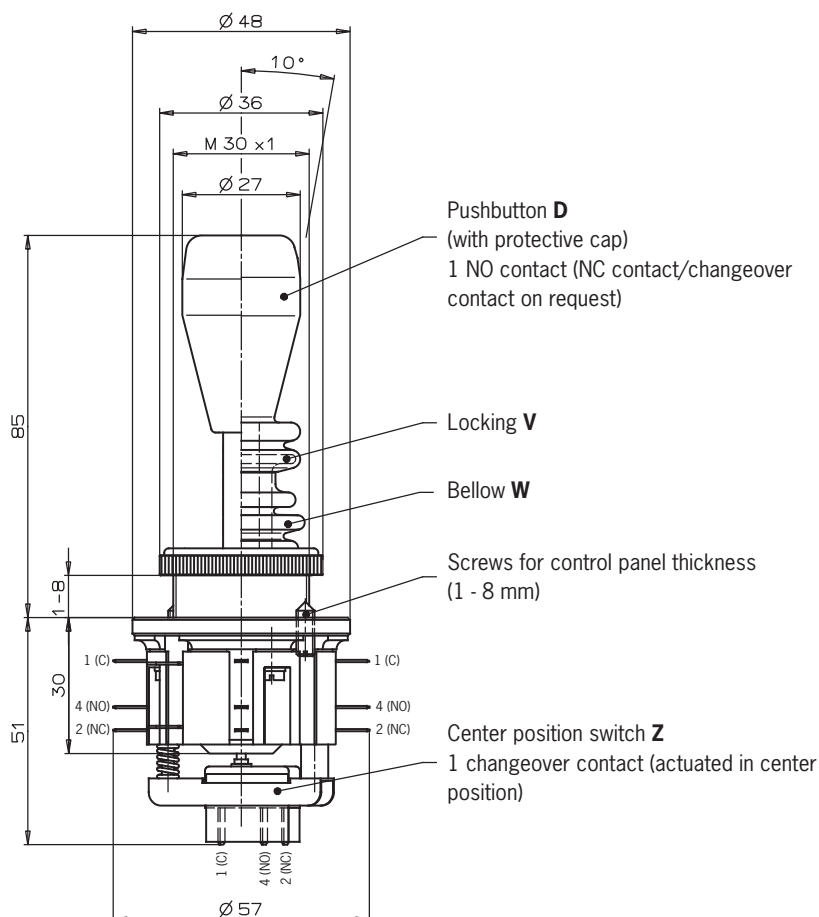
Germanischer Lloyd

Certificate no. 17 041 - 00 HH

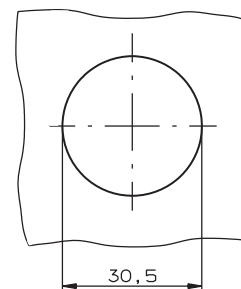


- ▶ Front panel installation according to IEC 947-5-1 D30
- ▶ 1 to 8 actuating directions with spring return switches or combined
- ▶ One changeover contact with tab connector 2.8 x 0.5 IEC 760 for each actuating direction
- ▶ Center position switch
- ▶ Pushbutton in handle

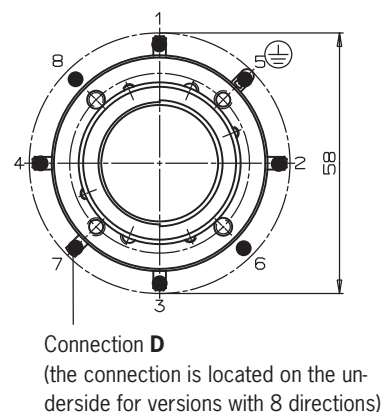
Dimension drawing



Panel cut-out



Actuating directions



Ordering code

W	K		
---	---	--	--

Series

Actuating direction and switching characteristics

Stayput switch **S** (switching lever engages in selected position)
Spring return switch **T** (switching lever returns to center position)

Options

Pushbutton **D**
Bellow **W**
Locking **V**
Center position switch **Z**
All-round actuation **R**

Technical data

Parameter	Value	Unit
Housing material	Reinforced thermoplastic/aluminum	
Switching lever material	Stainless steel	
Degree of protection acc. to IEC 529	IP 65/IP 54	
Actuating side with/without bellow	IEC 947-5-1 D30	
Mounting	Approx. 0.2	kg
Weight	1x10 ⁶ operating cycles	
Mechanical life	-5 to +65	°C
Ambient temperature with spring return switch	-25 to +65	°C
Ambient temperature with stayput switch	-40 to +50	°C
Storage temperature	8	
Max. number of switching elements	Tab connector 2.8 x 0.5 IEC 760	
Connection	Changeover contact C IEC 947-5-1	
Switching contacts	Snap-action contact element, design ES 584	
Switching principle	250	V
Rated insulation voltage U _i	2.5	kV
Rated impulse withstand voltage U _{imp}	230 V/4 A	
Utilization category AC 15	24 V/2 A	
Utilization category DC 13	12	mA
Switching current, min., at 24 V	10	V
Switching voltage, min.	Silver alloy, gold on request	
Contact material	T6/F10	A
Short circuit protection (control circuit fuse)	8	
Max. number of actuating directions	Actuation of one switching element (vertically or horizontally) or two adjacent switching elements (diagonally) at the same time, with eight microswitches*	
All-round actuation R (spring return switch only)	1	
Switch positions per direction	According to order designation	
Stayput switch S (latching)	According to order designation	
Spring return switch T (automatic return)	Option	
Bellow W	Option	
Locking V in center position	Option	
Center position switch Z	Option (1 changeover contact)	
Pushbutton D	Option	
Degree of protection acc. to IEC 529	IP 65	
Life	5x10 ⁴ operating cycles at 0.7 A/250 V AC	
Switching contact	1 x NO contact (NC contact/changeover contact on request)	
Utilization category AC 15	230 V/2 A	
Utilization category DC 13	24 V/1 A	
Switching current, min., at 24 V	12	mA
Switching voltage, min.	10	V
Actuating force	< 8	N
Actuating travel	Approx. 3	mm

Ordering examples

Joystick switch series **WK**, actuating directions **1+3** stayput switch **S**,
actuating directions **2+4** spring return switch **T**, pushbutton **D**, center position switch **Z**,
locking **V** in center position

WK S13 T24 DZV

Joystick switch series **WK**, 8 switching elements as spring return switch, all-round actuation **R**

WK T1-8 R

Version

Joystick switch series **WK**, 4 switching elements, 2 actuating directions
(2 switching elements per actuating direction)

On request

* Diagonal actuation of adjacent switching elements with four microswitches can be realized on request.