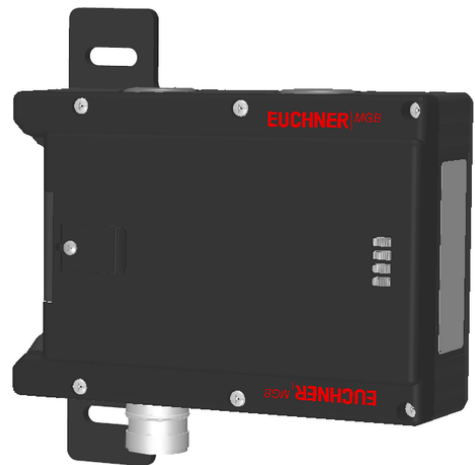


## **MGB-L0-APA-AA1A2-S1-L-112598 (Order no. 112598)**

**Interlocking module MGB-L0-APA..., without controls or indicators, RC18, on mounting plates**

- ▶ Interlocking (without guard locking)
- ▶ With plug connector RC18
- ▶ Mounted on mounting plates
- ▶ Unicode



### **Guard locking type**

MGB- The bolt tongue in the handle module is moved into and out of the interlocking module by  
L0... actuating the door handle. The door arm is not locked in the locked position.

### **Door hinge**

A mechanical door stop is permanently integrated into the evaluation module of the MGB. A marking on the stop makes adjustment easier.

### **LED indicator**

The LED indicator indicates all important system and status information.

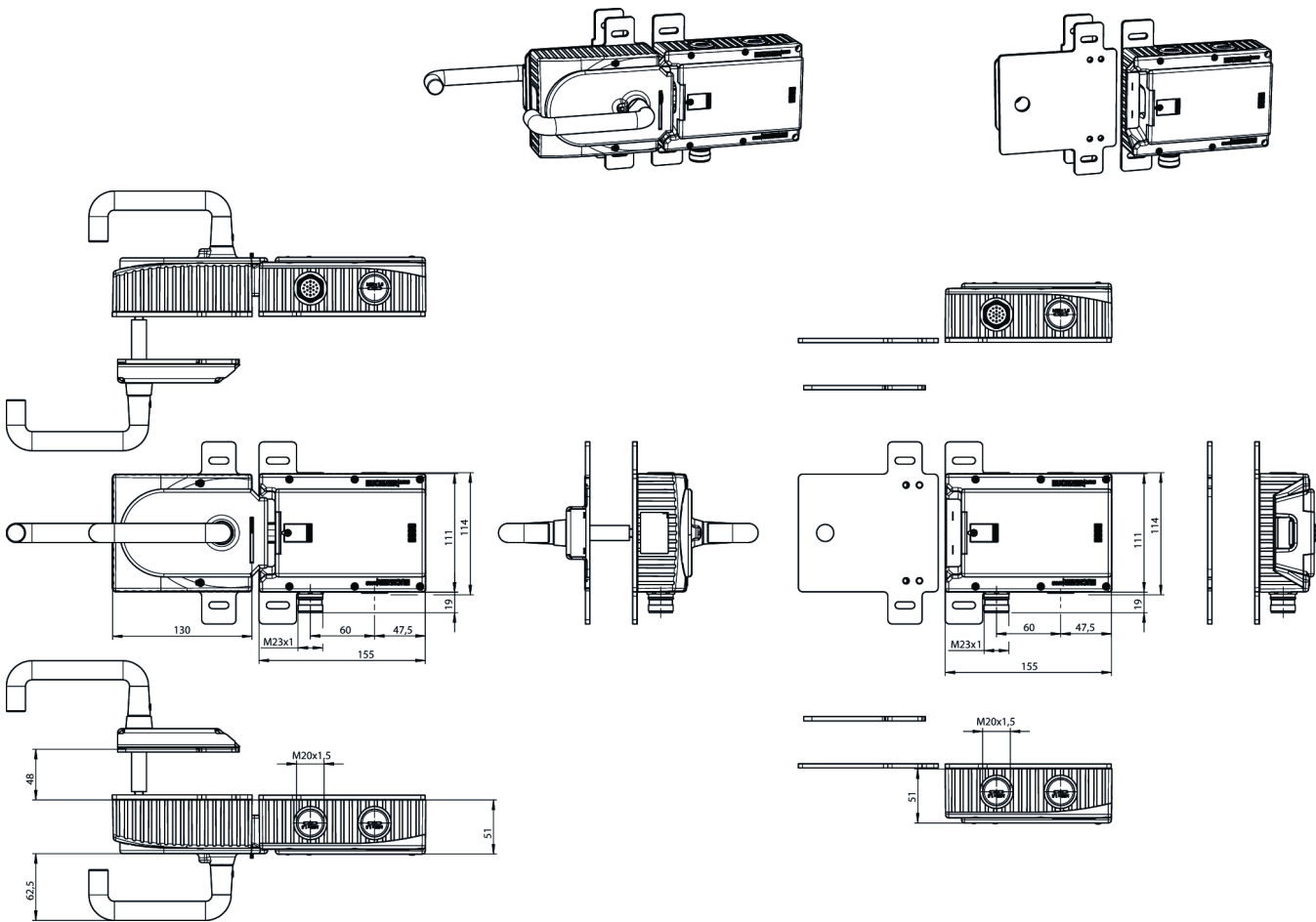
### **Monitoring outputs**

- OD ON when the door is closed
- OT Bolt tongue inserted into the evaluation module
- OI Diagnostics; there is a fault

### **Notice**

The interlocking module is pre-assembled on a mounting plate.

**Dimensional drawings**



Dimensional drawings

