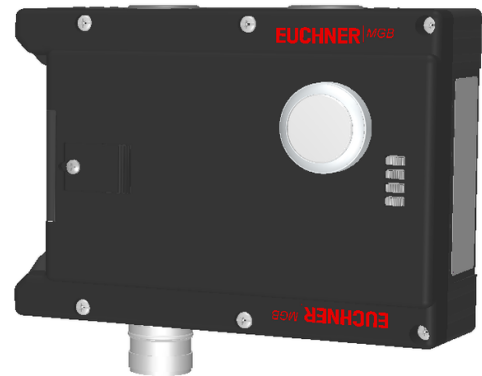


MGB-L1-ARC-AK1A1-S1-L-121041 (Order no. 121041)

Locking module MGB-L1-ARC... (guard locking by spring force) with 1 pushbutton, RC18, multicode

- ▶ Guard locking with guard lock monitoring
- ▶ Can be connected in series with other AR devices (e.g. CES-AR and CET-AR)
- ▶ 1 pushbuttons (illuminated)
- ▶ With lens set, 6 pcs.
- ▶ With plug connector RC18
- ▶ Multicode



Guard locking type

MGB- The locking arm is held in the locked position by spring force and is unlocked by solenoid force
L1... (closed-circuit current principle, mechanically locked).

Door hinge

A mechanical door stop is permanently integrated into the evaluation module of the MGB. A marking on the stop makes adjustment easier.

LED indicator

The LED indicator indicates all important system and status information.

Monitoring outputs

- OT Bolt tongue inserted into the evaluation module
- OL Guard locking solenoid in locked position
- OI Diagnostics; there is a fault

Pushbuttons

S1 1 NO contact, illuminated

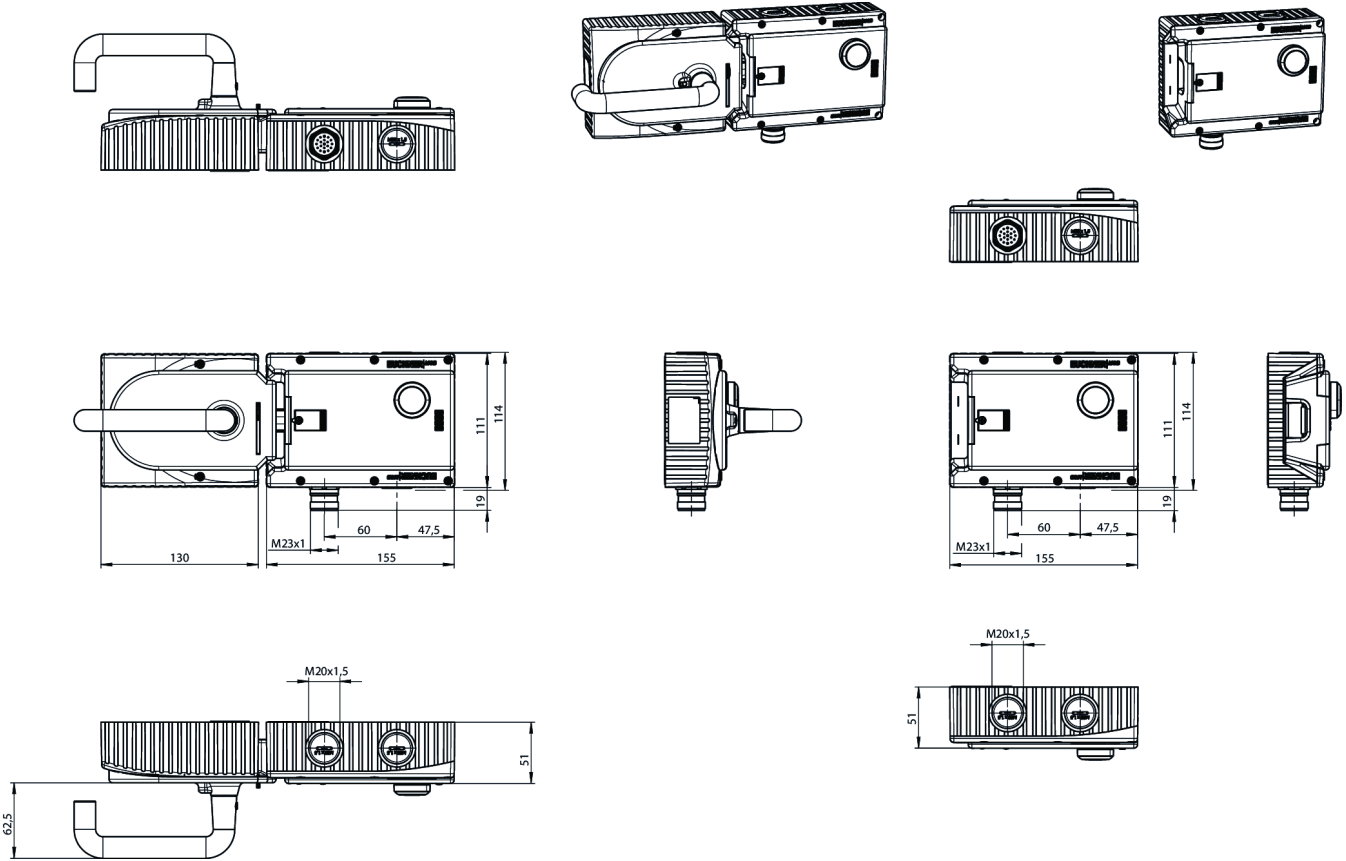
Lens set

The color of the pushbuttons can be selected using the color cover set included (5 colors). Item no.: 120344 (see Accessories)

Multicode evaluation

Every suitable handle module is detected by the safety switch.

Dimensional drawings



Dimensional drawings

