

MGB2-L2-MLI-U-Y0000-BJ-156392 (Order no. 156392)

Locking module MGB2-L2-MLI... (module without blanking covers, open-circuit current principle)

- ▶ Guard locking for the protection of persons or processes
- ▶ Locking module MGB2 for connection to a bus module MBM
- ▶ Interlocking with monitored guard locking
- ▶ Category 4/PL e for the evaluation of all safety functions
- ▶ Open version (without submodules)
- ▶ Adjustable door hinge
- ▶ Unicode
- ▶ Compatible with all Modular devices



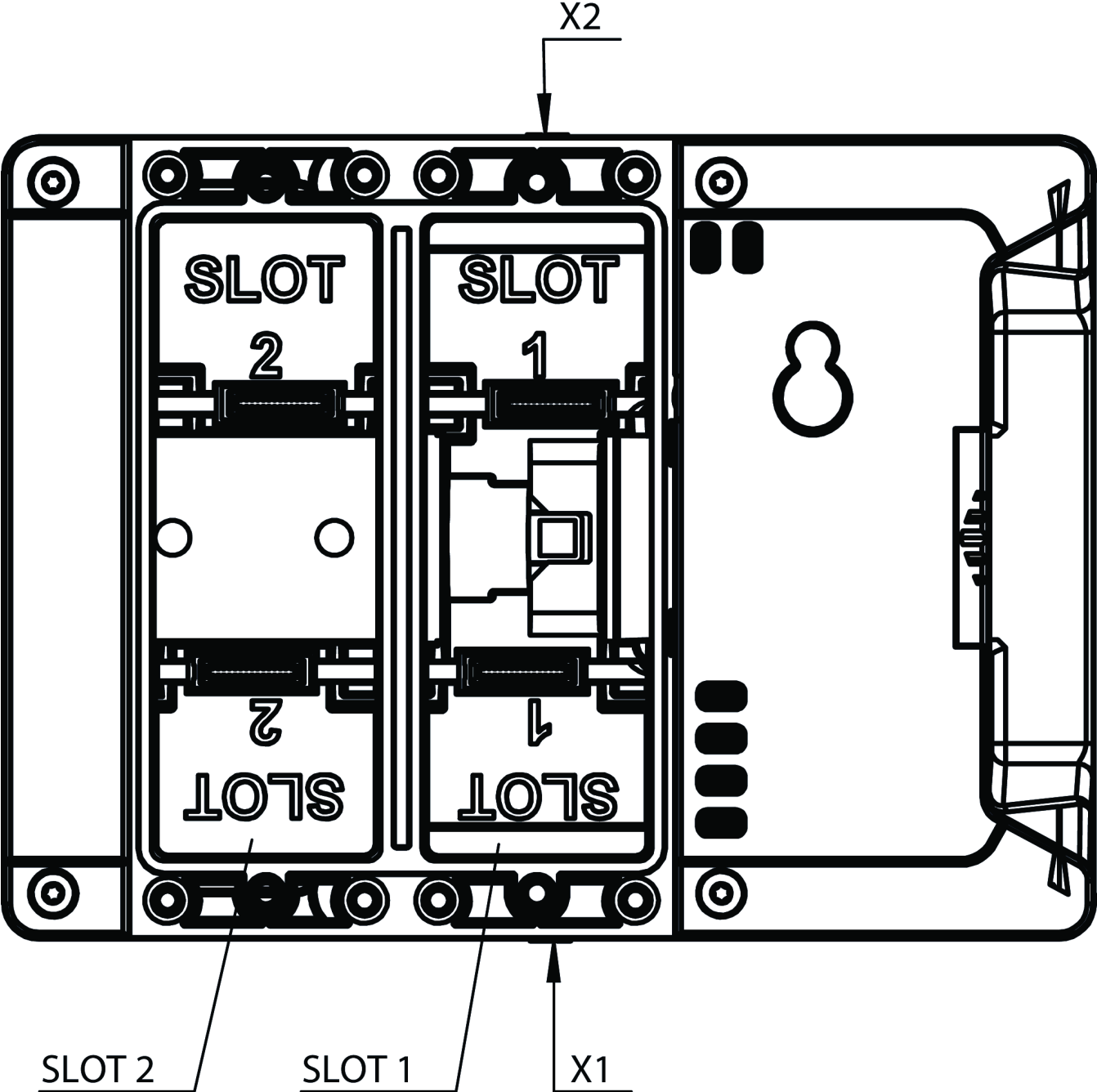
Guard locking type

MGB2- Guard locking by solenoid force. Activation of guard locking by applying voltage to the guard
L2... locking solenoid. (open-circuit current principle)

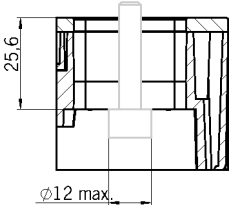
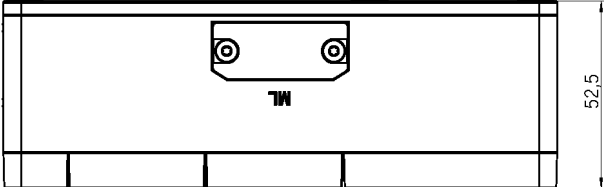
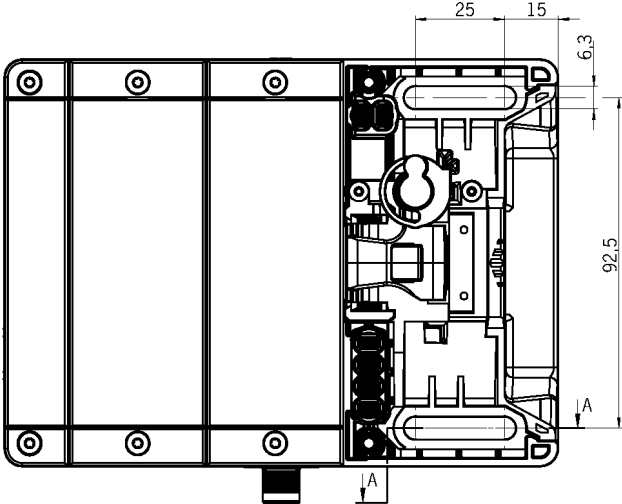
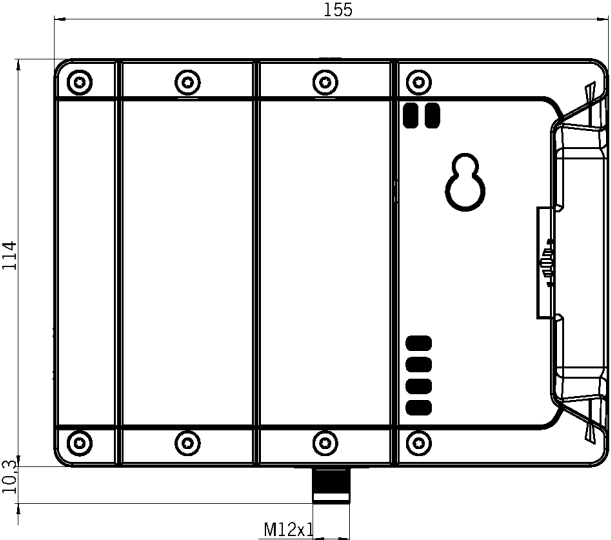
Door hinge

On the locking modules, the door stop can be changed from right to left and vice versa at any time with little effort.

Dimensional drawings



Dimensional drawings



A - A