

NZ2RK-2131 (Order no. 090921)

Safety switch NZ.RK, roller plunger, steel roller \varnothing 8 mm, plug connector SR11

- ▶ Roller plunger, steel roller \varnothing 8 mm
- ▶ SR11 plug connector; 11-pin + PE
- ▶ 3 pos. driven contact
- ▶ 1 NO contacts



Approach direction



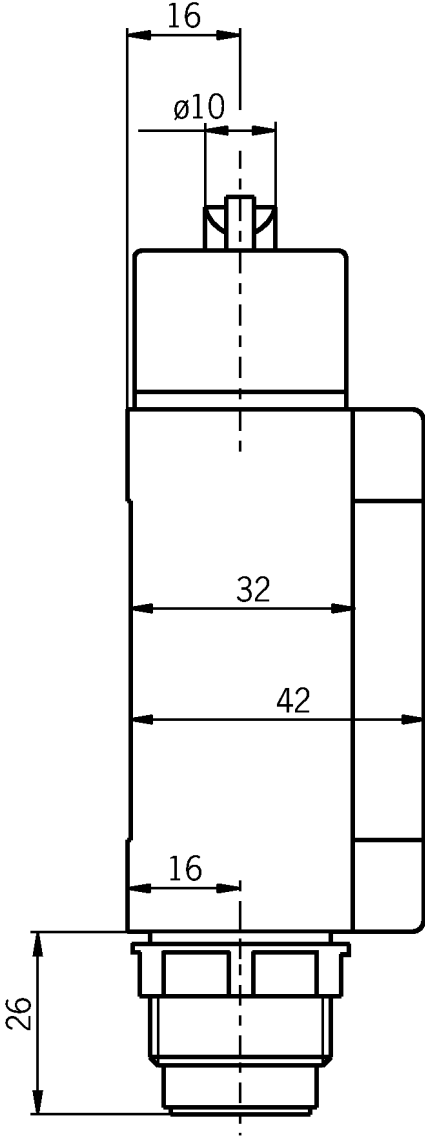
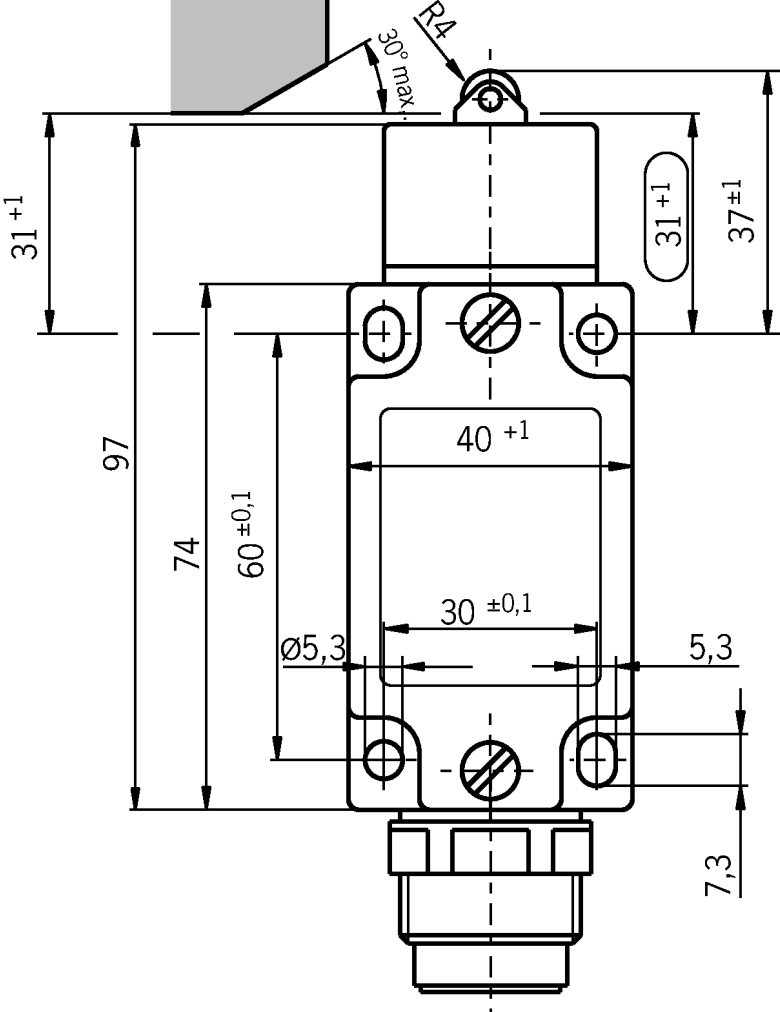
Horizontal

Can be adjusted in 90° steps

Switching element

2131H Slow-action switching contact 3 positively driven contacts $\ominus \rightarrow$ + 1 NO contact

Dimensional drawings



Connection examples

