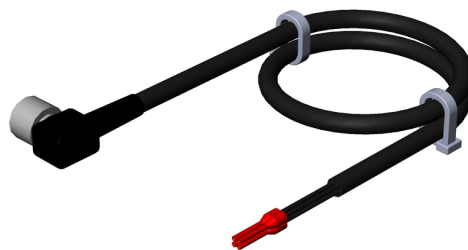


C-M08F04-04X025PV10,0-ES-084703 (Order no. 084703)

Connecting cable with angled plug connector M8, 4-pin, 10 m

- ▶ M8 female plug, 4-pin
- ▶ Angled plug connector
- ▶ Cable exit A (right)
- ▶ PVC cable
- ▶ Cable length 10 m
- ▶ With flying lead

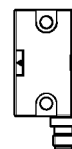


Dimensional drawings

CEM-A-LE05...

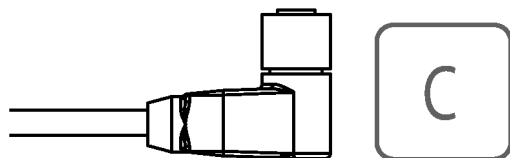
CEM-A-ME05K

CES-I-AP-.-C04-SK

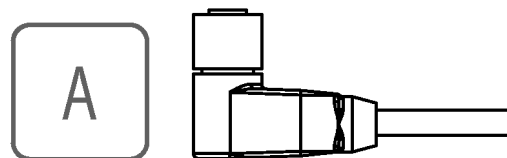


Bei der gezeigten Einbaulage des Geräts gilt:

Leitungsabgang C
(links)



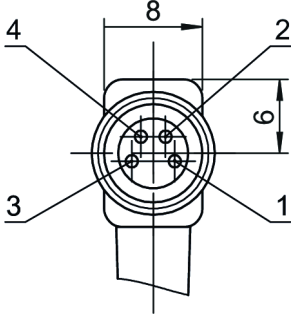
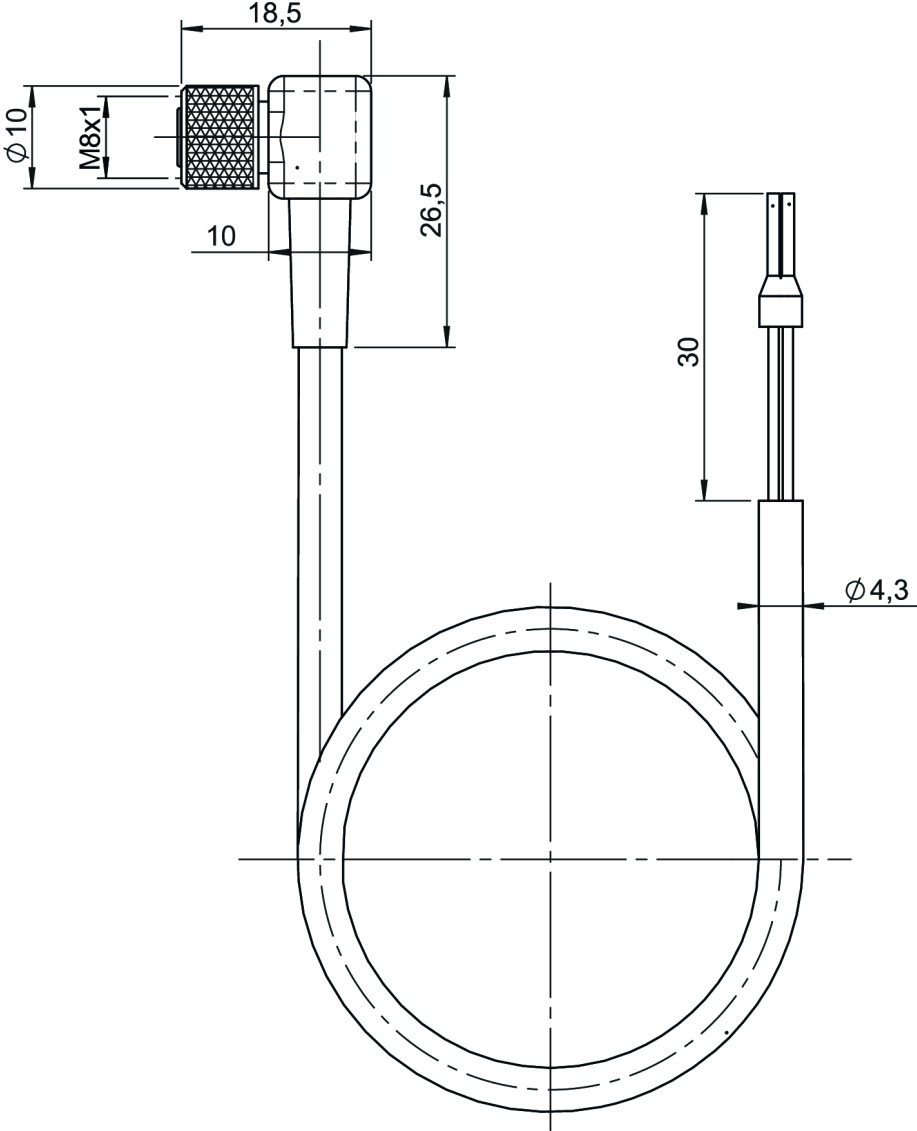
Leitungsabgang A
(rechts)



A Cable outlet A (right)

C Cable outlet C (left)

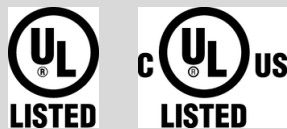
Dimensional drawings



- PIN1 = BN
- PIN2 = WH
- PIN3 = BU
- PIN4 = BK

Technical data

Approvals



Electrical connection values

Connection 1	
Rated voltage	36 V

Mechanical values and environment

Conductor identification	Color code
Conductor cross-section	0.25 mm ²
Number of conductors	4
Tightening torque	0.3 Nm
Dynamic bending radius	10 x cable diameter
Static bending radius	5 x cable diameter
Storage temperature	-30 ... 80 °C
Cable type	straight
Cable diameter	approx. 4.3 mm
Cable length	10 m
Drag chain suitability	No
Cable ambient temperature (dynamic)	-5 ... 70 °C
Cable ambient temperature (static)	-30 ... 80 °C

Material

Sheath PVC

Connection 2	
Conductor end	Cable end sleeve
Connection type	flying lead

Connection 1

Connection type	Plug connector M8x1
-----------------	---------------------