

RIEGEL CTP-AC-123653 (Order no. 123653)

Bolt for safety switch CTP, CTA

- ▶ Steel bolt
- ▶ For doors hinged on the right and left
- ▶ Can be locked in open position with padlocks
- ▶ Actuator included



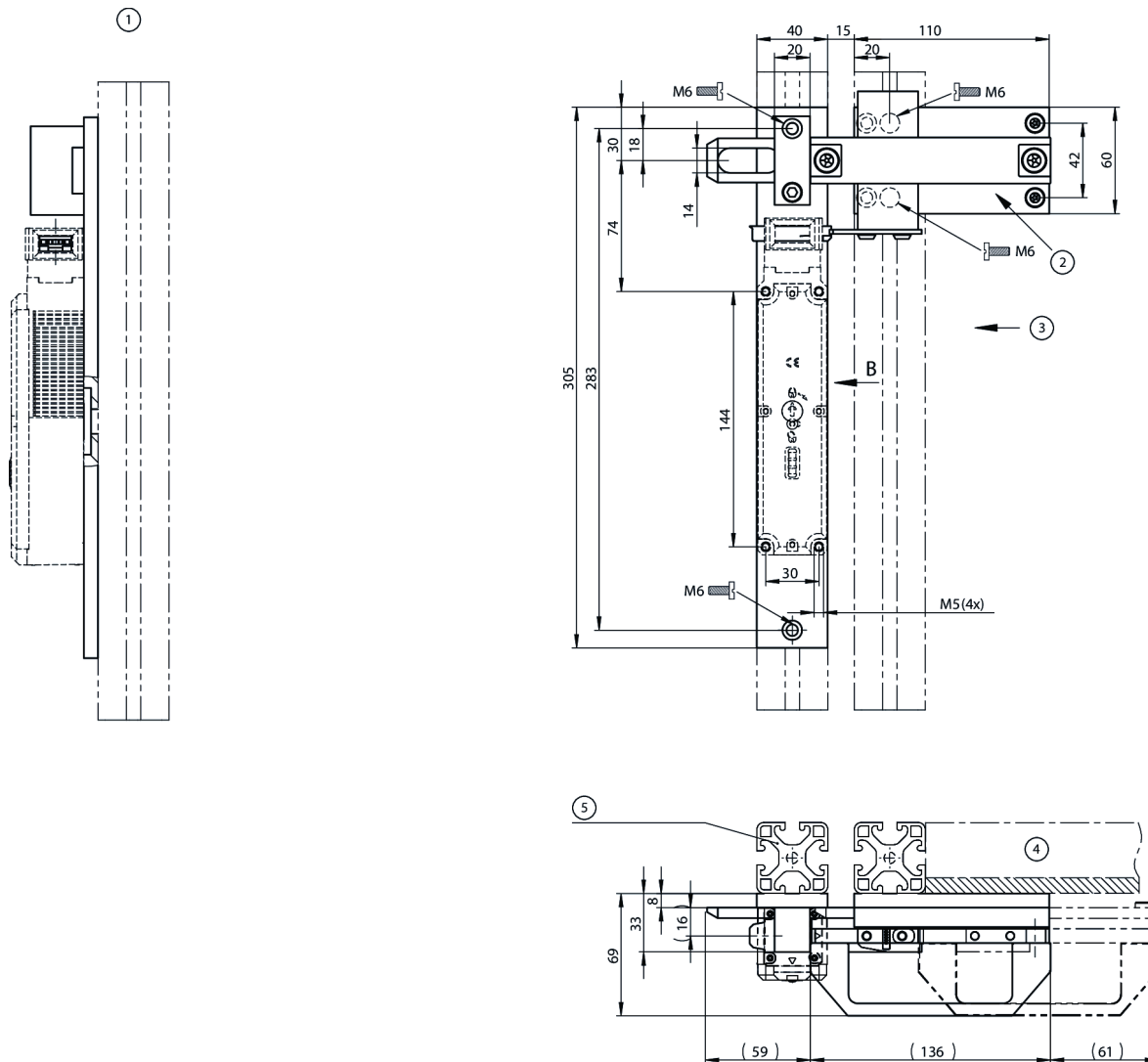
Benefits

- ▶ Robust construction
- ▶ Easily mounted to standard aluminum profiles and machine covers by screw connection
- ▶ Distinctive yellow color for easy recognition
- ▶ No additional door handle necessary

Notes

- ▶ The bolts are suitable for series CTP and CTA.
- ▶ Order safety switch separately

Dimensional drawings



1 View B

2 Attention! Bolt is not allowed to be used with an escape release!

3 Safety switch CTP approach direction A

4 Door hinged on the right

5 Safety guard frame (40x40)

Technical data

Mechanical values and environment

Approach direction	A or C
Number of safety switches that can be mounted	1
Escape release	None
Storage temperature	-25 ... 70 °C
Material	
Guide strips	Plastic
Switch bracket	Steel powder-coated
Base plate	Galvanized steel
Handle	Plastic

Miscellaneous

Detent mechanism	None
------------------	------