

## Series KE...

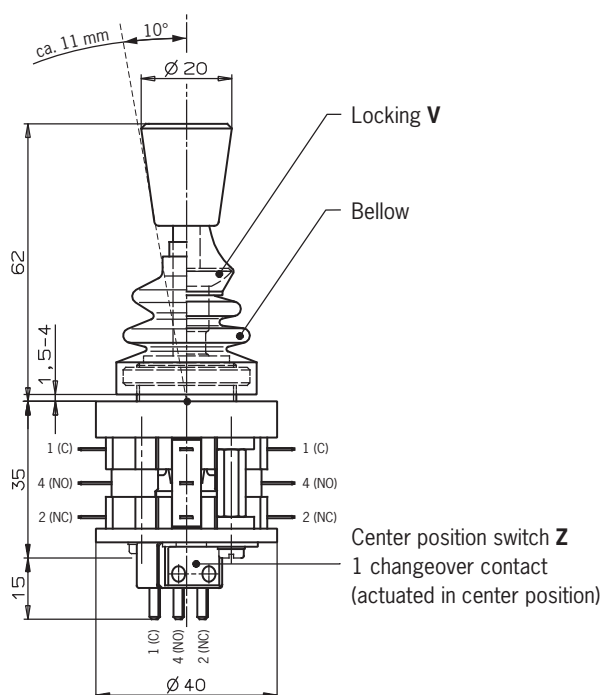
Germanischer Lloyd

Certificate no. 17 041 - 00 HH

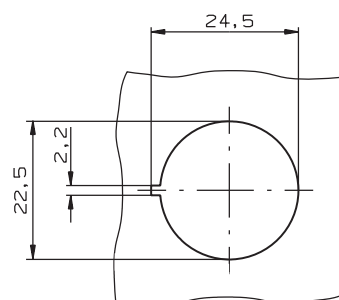


- ▶ Front panel installation according to IEC 947-5-1 D22
- ▶ 1 to 8 actuating directions, 4 switching elements. Stayput switch, spring return switch or combined
- ▶ One changeover contact with tab connector 2.8 x 0.5 IEC 760 for each actuating direction
- ▶ Center position switch

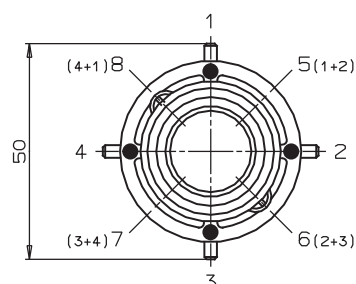
## Dimension drawing



Panel cut-out



Actuating directions



## Ordering code

K	E		
---	---	--	--

Series

## Actuating direction and switching characteristics

Stayput switch **S** (switching lever engages in selected position)  
Spring return switch **T** (switching lever returns to center position)

## Options

Locking **V**  
Center position switch **Z**  
All-round actuation **R**<sup>1)</sup>

1) Simultaneous actuation of 2 adjacent switching elements in diagonal actuating directions.

## Technical data

Parameter	Value	Unit
Housing material	Duroplast	
Switching lever material	Stainless steel	
Degree of protection acc. to IEC 529	IP 65	
Actuating side with/without bellow		
Mounting	IEC 947-5-1 D22	
Weight	Approx. 0.1	kg
Mechanical life	1x10 <sup>6</sup> operating cycles	
Ambient temperature with spring return switch	-25 to +65	°C
Ambient temperature with stayput switch	-25 to +65	°C
Storage temperature	-40 to +50	°C
Max. number of switching elements	4	
Connection	Tab connector 2.8 x 0.5 IEC 760	
Switching contacts	Changeover contact C IEC 947-5-1	
Switching principle	Snap-action contact element, design ES 587	
Rated insulation voltage U <sub>i</sub>	250	V
Rated impulse withstand voltage U <sub>imp</sub>	2.5	kV
Utilization category AC 15	230 V/4 A	
Utilization category DC 13	24 V/2 A	
Switching current, min., at 24 V	12	mA
Switching voltage, min.	10	V
Contact material	Silver alloy	
Short circuit protection (control circuit fuse)	T10/F20	A
Max. number of actuating directions	8	
All-round actuation R	Actuation of one switching element (vertically or horizontally) or two adjacent switching elements (diagonally) at the same time	
Switch positions per direction	1	
Stayput switch S (latching)	According to order designation	
Spring return switch T (automatic return)	According to order designation	
Locking V in center position	Option	
Center position switch Z	Option (1 changeover contact)	

## Ordering examples

Joystick switch series **KE**, actuating directions **1+3** stayput switch **S**,  
actuating directions **2+4** spring return switch **T**, center position switch **Z**

**KE S13 T24 Z**

Joystick switch series **KE**, actuating directions **1+3** spring return switch **T**,  
locking **V** in center position

**KE T13 V**

Joystick switch series **KE**, actuating directions **1-4** spring return switch **T**,  
all-round actuation **R**

**KE T1234 R**