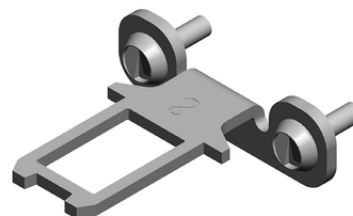


## BETAETIGER-S-WQ-SN-C2498 (Order no. 158407)

### Bent actuator S for safety switch SGA-EX/STA-EX

- ▶ Two safety screws included
- ▶ Minimum door radius 300 mm



### Notice

S-...-SN actuators must not be used in conjunction with insertion funnels. S-...-LN actuators must be used for insertion funnels.

### Screws made of stainless steel

The safety screws included can be inserted with a normal tool, but cannot be removed again.

## Technical data

### Mechanical values and environment

Storage temperature	-25 ... 70 °C	
Overtravel	max. 5 mm	
Door radius	min. 300 mm	
Material	Screw	Stainless steel
	Actuator	Stainless steel
Locking force $F_{max}$	max. 2000 N reduced locking force by actuator	

### Miscellaneous

C number	C2498	without rubber bushes and dowel pins and with Ø4.4 mounting holes
Usability of insertion funnel	No	