

## Series KB...

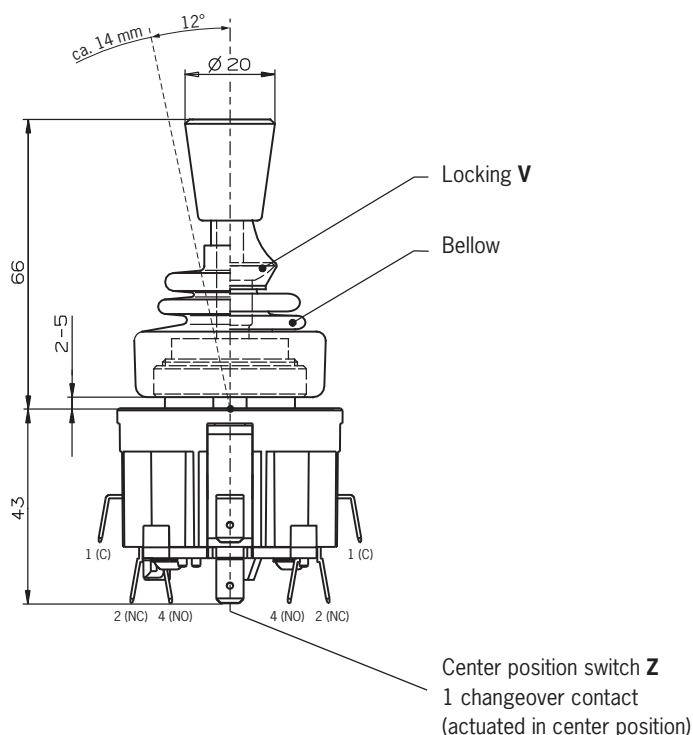
Germanischer Lloyd

Certificate no. 17 041 - 00 HH

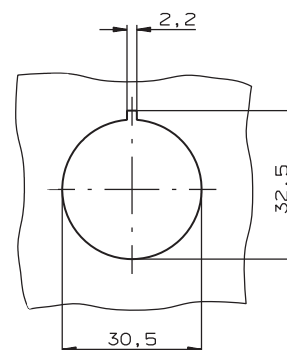


- ▶ Front panel installation according to IEC 947-5-1 D30
- ▶ 1 to 8 actuating directions, 4 switching elements. Stayput switch, spring return switch or combined
- ▶ One changeover contact with tab connector 6.3 x 0.8 IEC 760 for each actuating direction

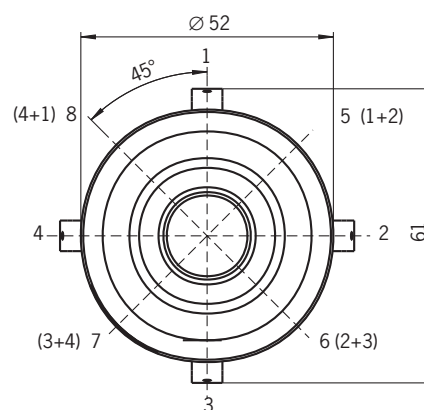
## Dimension drawing



### Panel cut-out



### Actuating directions



## Ordering code

<b>K</b>	<b>B</b>		
----------	----------	--	--

### Series

### Actuating direction and switching characteristics

Stayput switch **S** (switching lever engages in selected position)  
Spring return switch **T** (switching lever returns to center position)

### Options

Locking **V**  
All-round actuation **R**<sup>1)</sup>  
Center position switch **Z**

1) Simultaneous actuation of 2 adjacent switching elements in diagonal actuating directions.

## Technical data

Parameter		Value	Unit
Housing material		Thermoplastic	
Switching lever material		Stainless steel	
Degree of protection acc. to IEC 529		IP 65	
Actuating side with/without bellow			
Mounting		IEC 947-5-1 D30	
Weight		Approx. 0.2	kg
Mechanical life	Spring return switch	2x10 <sup>6</sup> operating cycles	
	Stayput switch	1x10 <sup>6</sup> operating cycles	
Ambient temperature with spring return switch		-25 to +65	°C
Ambient temperature with stayput switch		-25 to +65	°C
Storage temperature		-40 to +50	°C
Max. number of switching elements		4	
Connection		Tab connector 6.3 x 0.8 IEC 760 Screw terminal on request	
Switching contacts		Changeover contact C IEC 947-5-1	
Switching principle		Snap-action contact element	
Rated insulation voltage U <sub>i</sub>		250	V
Rated impulse withstand voltage U <sub>imp</sub>		2.5	kV
Utilization category AC 15		230 V/5 A	
Utilization category DC 13		24 V/3 A	
Switching current, min., at 24 V		10	mA
Switching voltage, min.		12	V
Contact material		Silver alloy	
Short circuit protection (control circuit fuse)		T10/F20	A
Max. number of actuating directions		8	
All-round actuation R (spring return switch only)		Actuation of one switching element (vertically or horizontally) or two adjacent switching elements (diagonally) at the same time	
Switch positions per direction		1	
Stayput switch S (latching)		According to order designation	
Spring return switch T (automatic return)		According to order designation	
Locking V in center position		Option	
Center position switch Z		Option (1 changeover contact)	

## Ordering examples

Joystick switch series **KB**, actuating directions **1+3** stayput switch **S**,  
actuating directions **2+4** spring return switch **T**

**KB S13 T24**

Joystick switch series **KB**, actuating directions **1+3** spring return switch **T**,  
center position switch **Z**, locking **V** in center position

**KB T13 ZV**