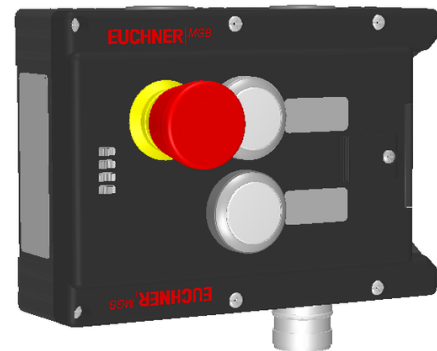


## MGB-L2-ARA-AM5A1-S1-R-121201 (Order no. 121201)

### Locking module MGB-L2-ARA... (guard locking by solenoid force) with 2 pushbuttons, emergency stop, incl. label carrier, RC18

- ▶ Guard locking with guard lock monitoring
- ▶ Can be connected in series with other AR devices (e.g. CES-AR and CET-AR)
- ▶ Emergency stop according to ISO 13850
- ▶ 2 pushbuttons (illuminated)
- ▶ With lens set, 6 pcs.
- ▶ incl. adhesive labels
- ▶ With plug connector RC18
- ▶ Unicode



### Guard locking type

MGB- L2... The locking arm is held in the locked position by solenoid force and is unlocked by spring force when the solenoid is switched off (open-circuit current principle, electrically locked).

### Door hinge

A mechanical door stop is permanently integrated into the evaluation module of the MGB. A marking on the stop makes adjustment easier.

### LED indicator

The LED indicator indicates all important system and status information.

### Monitoring outputs

- OL Guard locking solenoid in locked position
- OI Diagnostics; there is a fault

### Emergency stop device

S1 2 positively driven contacts, emergency stop with turn-to-reset, not illuminated

### Pushbuttons

- S2 1 NO contact, illuminated
- S3 1 NO contact, illuminated

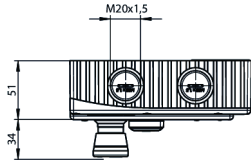
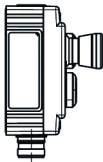
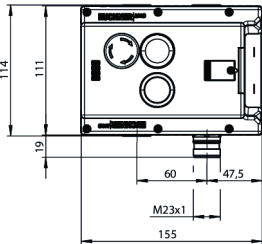
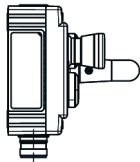
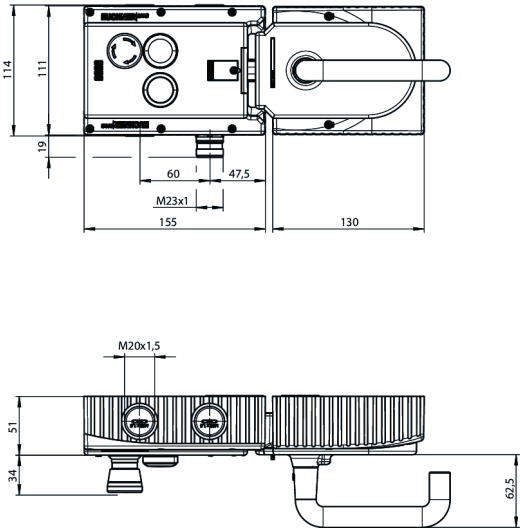
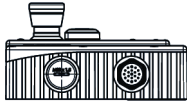
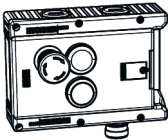
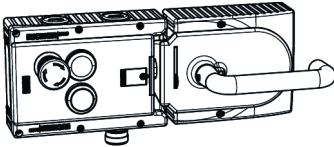
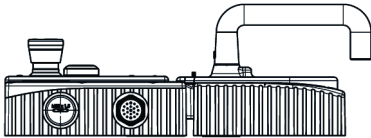
### Lens set

The color of the pushbuttons can be selected using the color cover set included (5 colors). Item no.: 120344 (see Accessories)

### Adhesive labels

Devices with adhesive labels have pre-formed recesses. The adhesive labels enclosed (standard size 12.5 x 27 mm) can be affixed in these recesses.

**Dimensional drawings**



Dimensional drawings

