

## SN03R12-514-M (Order no. 094769)

### Series SN... 12 mm, mechanical

- ▶ Plunger spacing 12 mm
- ▶ Upright housing, small flange
- ▶ Degree of protection IP67 according to IEC 60529

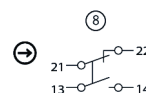
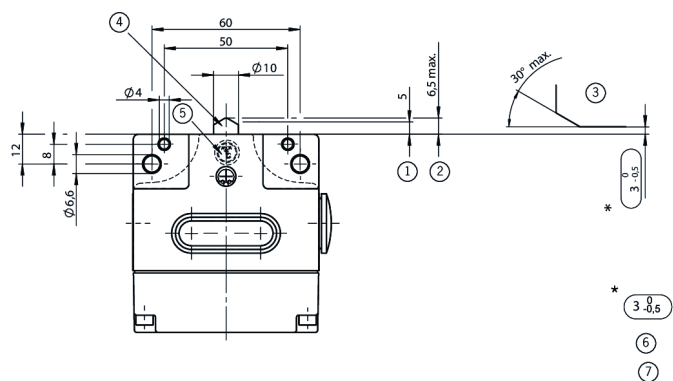


### Switching element

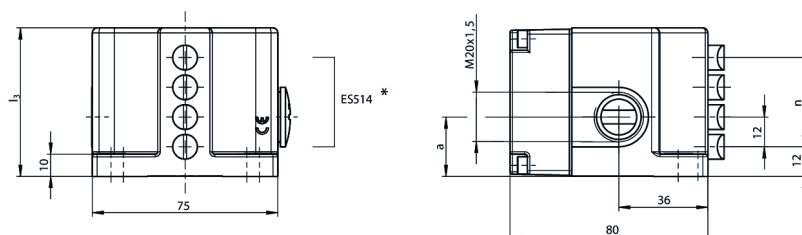
ES 514 Snap-action switching contact 1 NC  $\rightarrow$  + 1 NO

On the usage of safety switching elements, the dog distance  $\textcircled{3-0.5}$  must be maintained to achieve the positively driven travel. The dogs must be positively mounted according to EN ISO 14119, i.e. riveted, welded or secured in some other way against becoming loose.

### Dimensional drawings



6	84	24
5	72	24
4	60	24
3	48	24
2	36	19
n	$l_3$	a



\* Safety switching element ES514 positive opening. Positive opening function is dependent on maintaining this distance.

1 Operating point

2 Free position

3 Dog

4 Depending on version

5 Pressure sensitive label 041734 applied.

6 Actuators (dogs) must be connected to the machine in a flush position.

7 Switch can be replaced only with the same type.

8 Switching element ES514 with snap-action function: 1 NO contact and 1 positively driven NC contact with double gap and electrically isolated switching bridge.

9 Number of plungers

Connection examples

# ES 514

