

NM01HBA-M (Order no. 084527)

Safety switch NM.HB with lever arm, short housing, cable entry M16 x 1.5

- ▶ Lever arm, roller diameter 12 mm
- ▶ short housing
- ▶ Cable entry M16 x 1.5
- ▶ 1 pos. driven contact



Approach direction



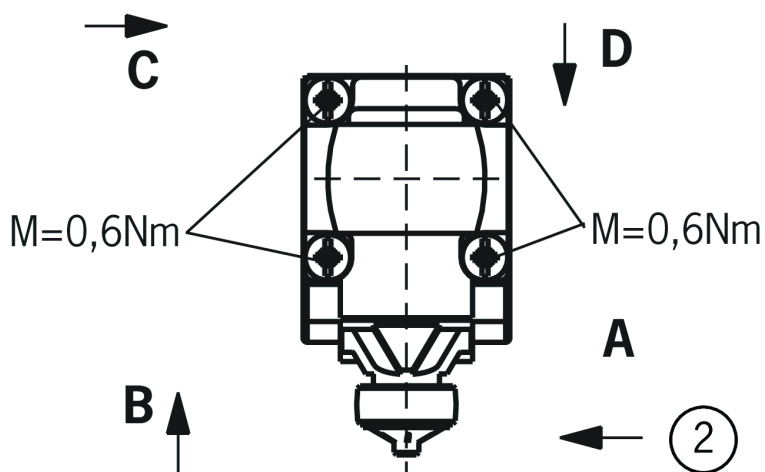
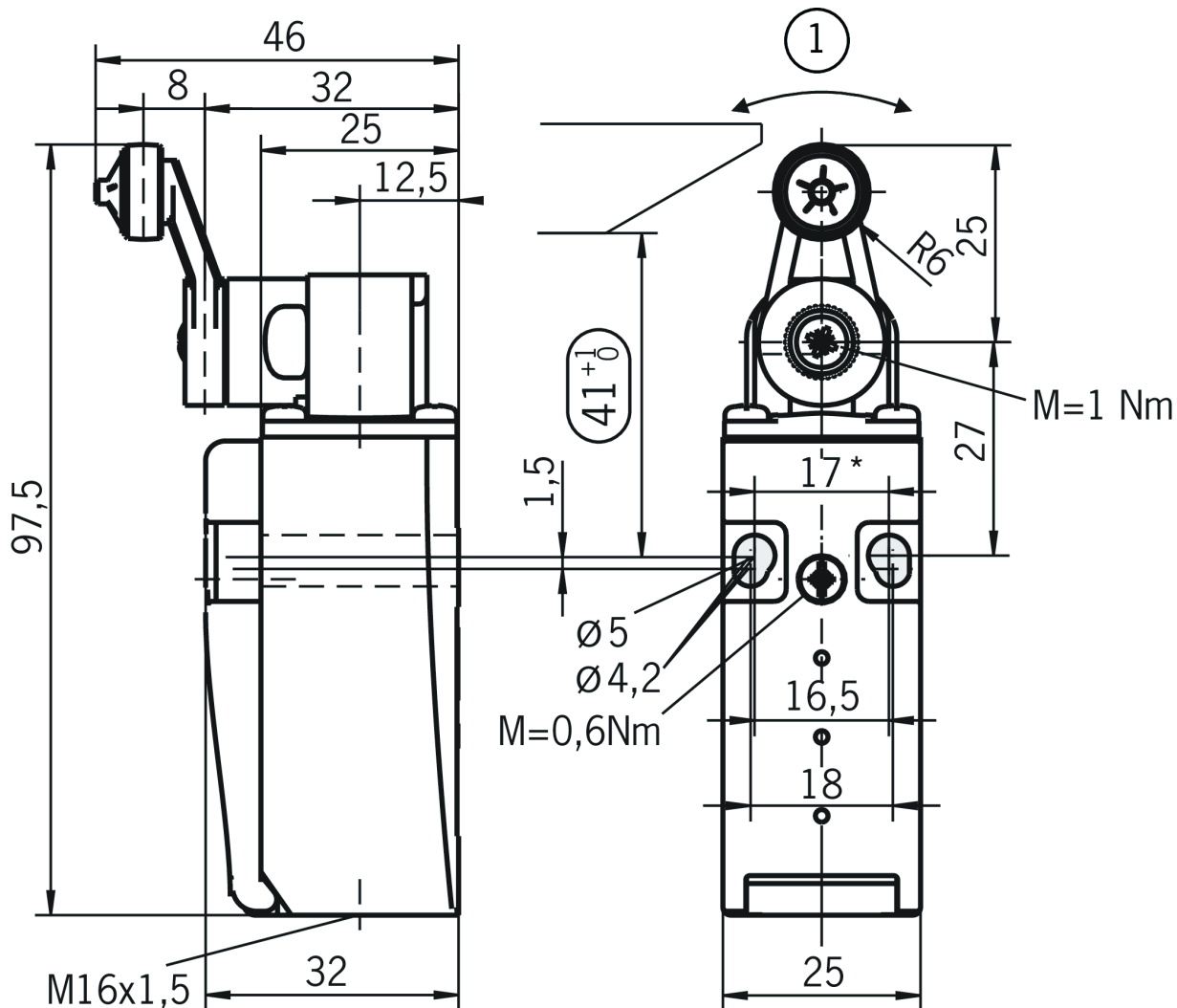
Horizontal

Can be adjusted in 90° steps

Switching element

ES01 Slow-action switching contact 1 positively driven contact (→)

Dimensional drawings

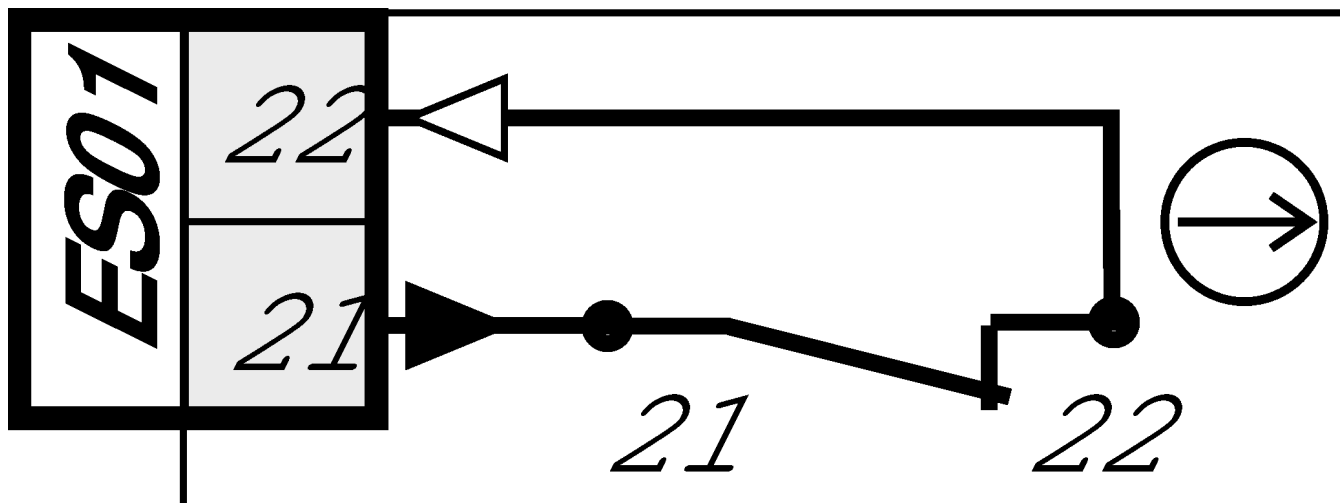


* fixed positioning for safety-related applications (M5)

1 Actuating direction

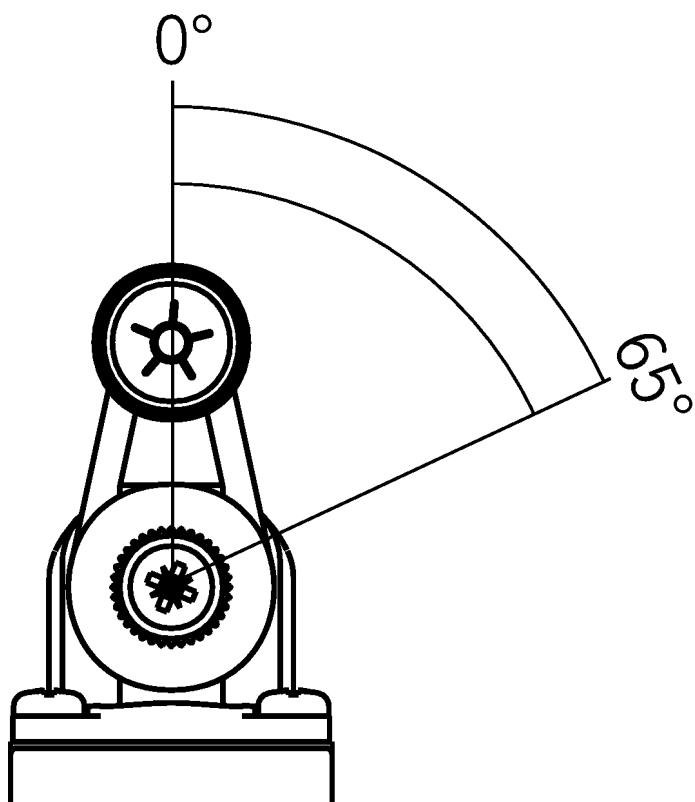
2 Standard

Connection examples



Shift travel diagrams

NM...HB



ES01

