

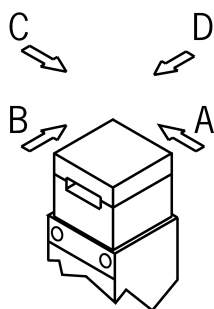
## NZ2VZ-538E (Order no. 090143)

### Safety switch NZ.VZ, plug connector SR6

- ▶ SR6 plug connector; 6-pin + PE
- ▶ 2 pos. driven contact



### Approach direction



Horizontal

Can be adjusted in 90° steps

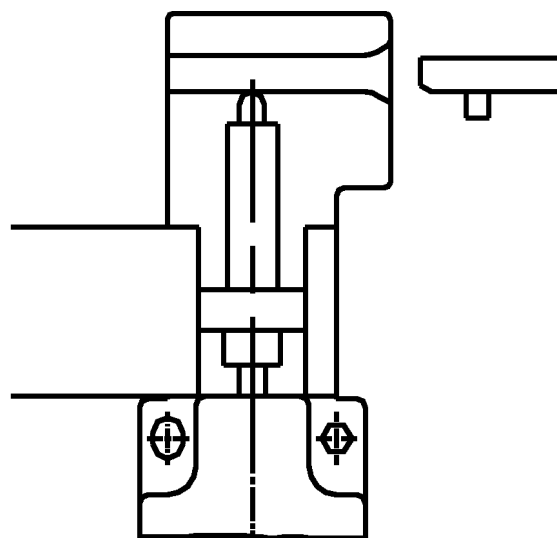
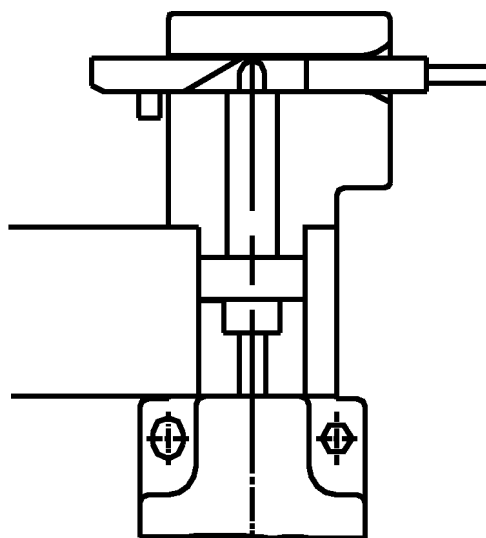
### Switching element

538H Slow-action switching contact 2 positively driven contacts (→)

### Accessories required

Actuator is not included.

## Functional drawings



# 538

