

RIEGEL TP/GP-AC (Order no. 100760)

Bolt for safety switches GP and TP

- ▶ Bolt for 2 safety switches GP and TP
- ▶ Steel bolt
- ▶ For doors hinged on the right or left
- ▶ Suitable for a door gap of approx. 15 mm



Scope of delivery

- ▶ Bolt parts
- ▶ Actuator

To be ordered separately:

- ▶ Safety switch

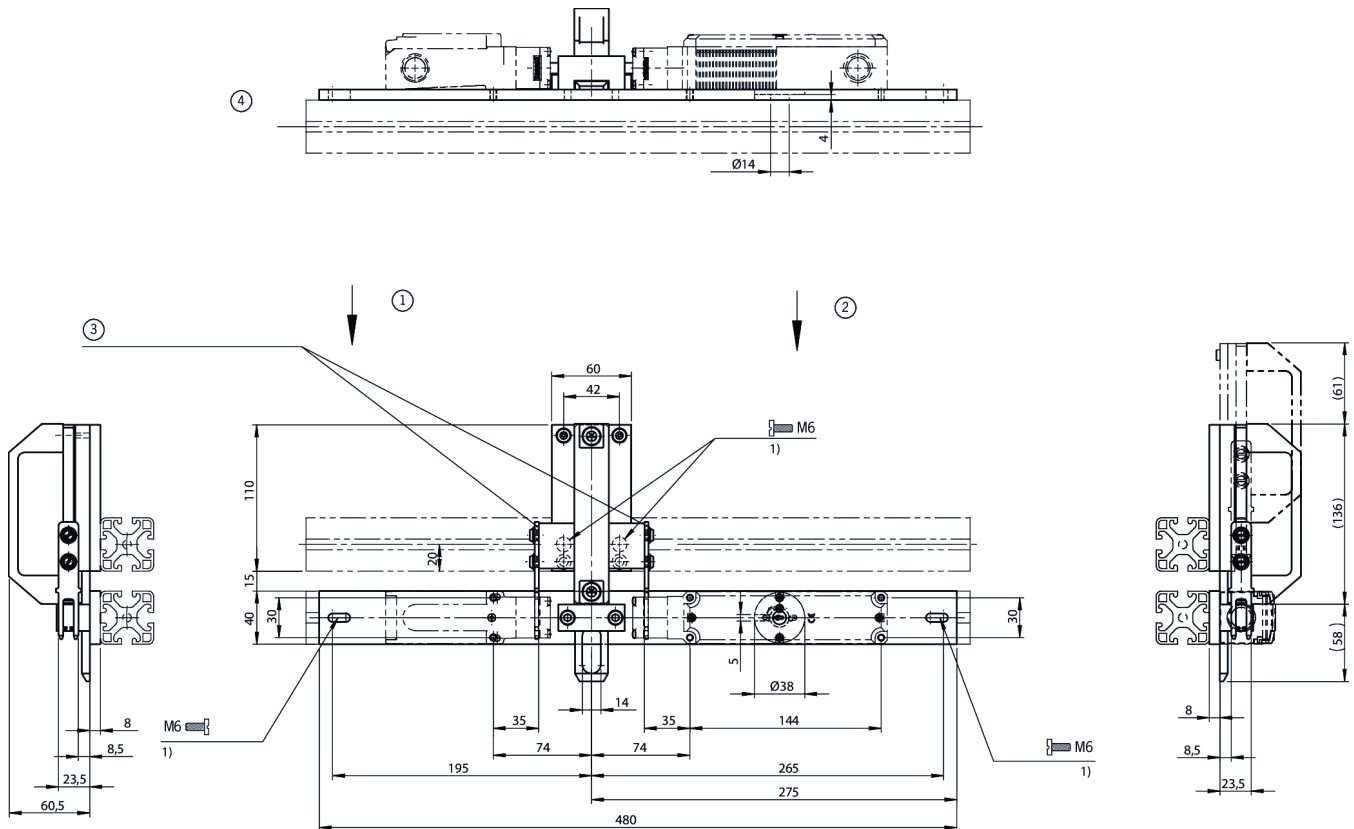
Door types and door hinges

Suitable for hinged or sliding doors Suitable for doors hinged on the left and right With door stop, door cannot be opened inwards.

Integrated lockout bar

With the aid of the integrated lockout bar, the bolt can be secured in the open position, e.g. using padlocks. It is possible to prevent people from being locked in the danger area unintentionally.

Dimensional drawings



1 Safety switch GP approach direction C

1) These screws must be securely and permanently connected to the guard, e.g. by bonding or drilling out the hex socket

2 Safety switch TP approach direction A

3 Actuator must be securely and permanently attached to the bolt, e. g.: using the non-removable screws enclosed!

4 Attention! Bolt is not allowed to be used in conjunction with an escape release!

Technical data

Mechanical values and environment

Approach direction	A or C
Number of safety switches that can be mounted	2
Escape release	None
Storage temperature	-25 ... 70 °C
Material	
Base plate	Galvanized steel
Guide strips	Plastic
Handle	Plastic
Switch bracket	Steel powder-coated

Miscellaneous

Detent mechanism open position	Ball detent mechanism
--------------------------------	-----------------------