

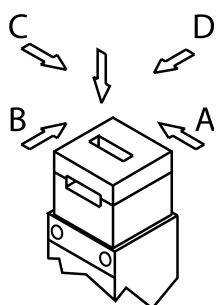
NM11VZA-M (Order no. 084452)

Safety switch NM.VZ, long housing, cable entry M16 x 1.5

- ▶ 3x cable entry M16 x 1.5
- ▶ 1 pos. driven contact
- ▶ 1 NO contacts



Approach direction



Horizontal and vertical
Can be adjusted in 90° steps

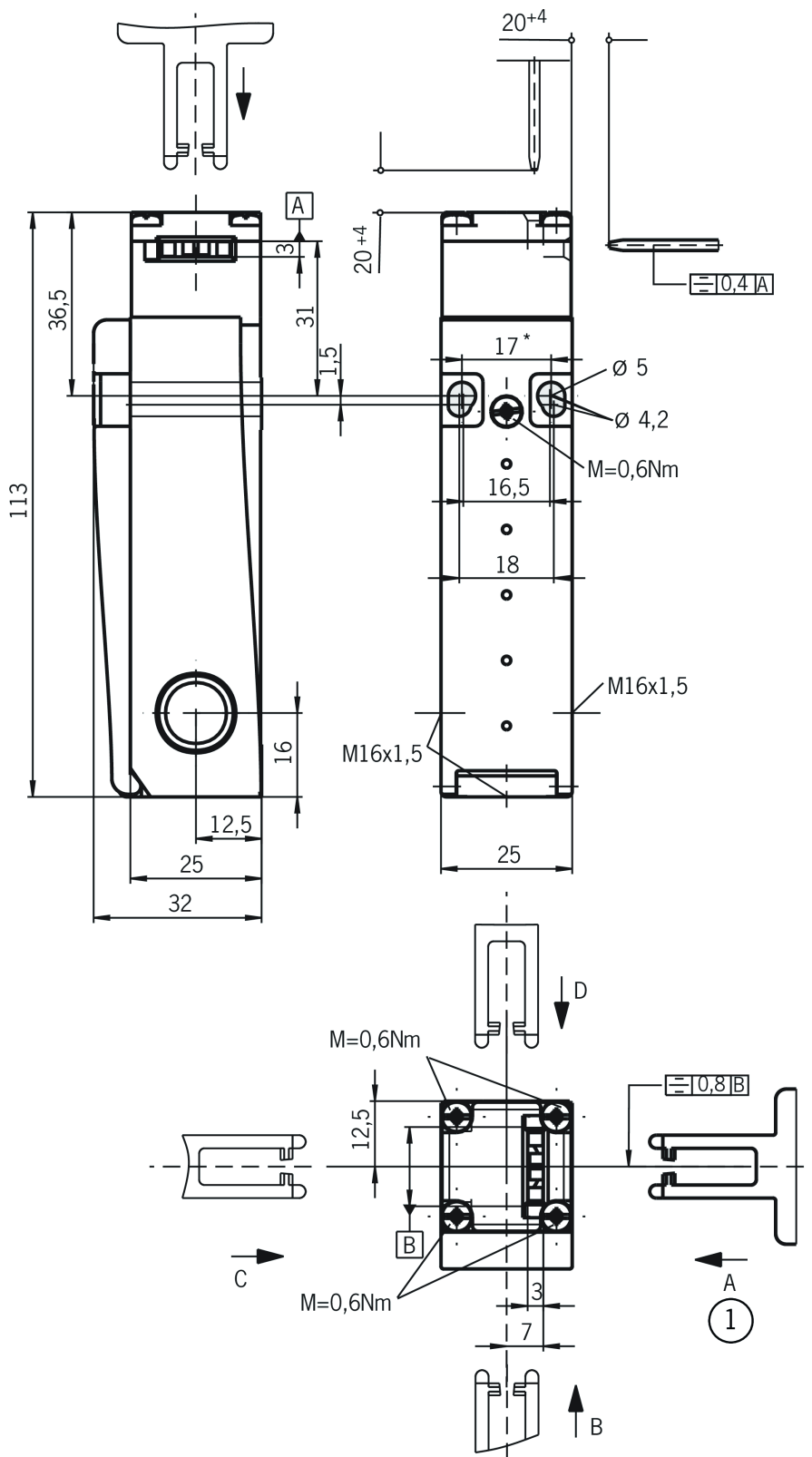
Switching element

ES11 Slow-action switching contact 1 positively driven contact \rightarrow + 1 NO contact

Accessories required

Actuator is not included.

Dimensional drawings



* fixed positioning for safety-related applications (M5)

1 Standard

Connection examples

