

GLBF04R12-1514-M (Order no. 085943)

Series GLBF... 12 mm, mechanical

- ▶ Plunger spacing 12 mm
- ▶ Horizontal housing
- ▶ Degree of protection IP67 according to IEC 60529



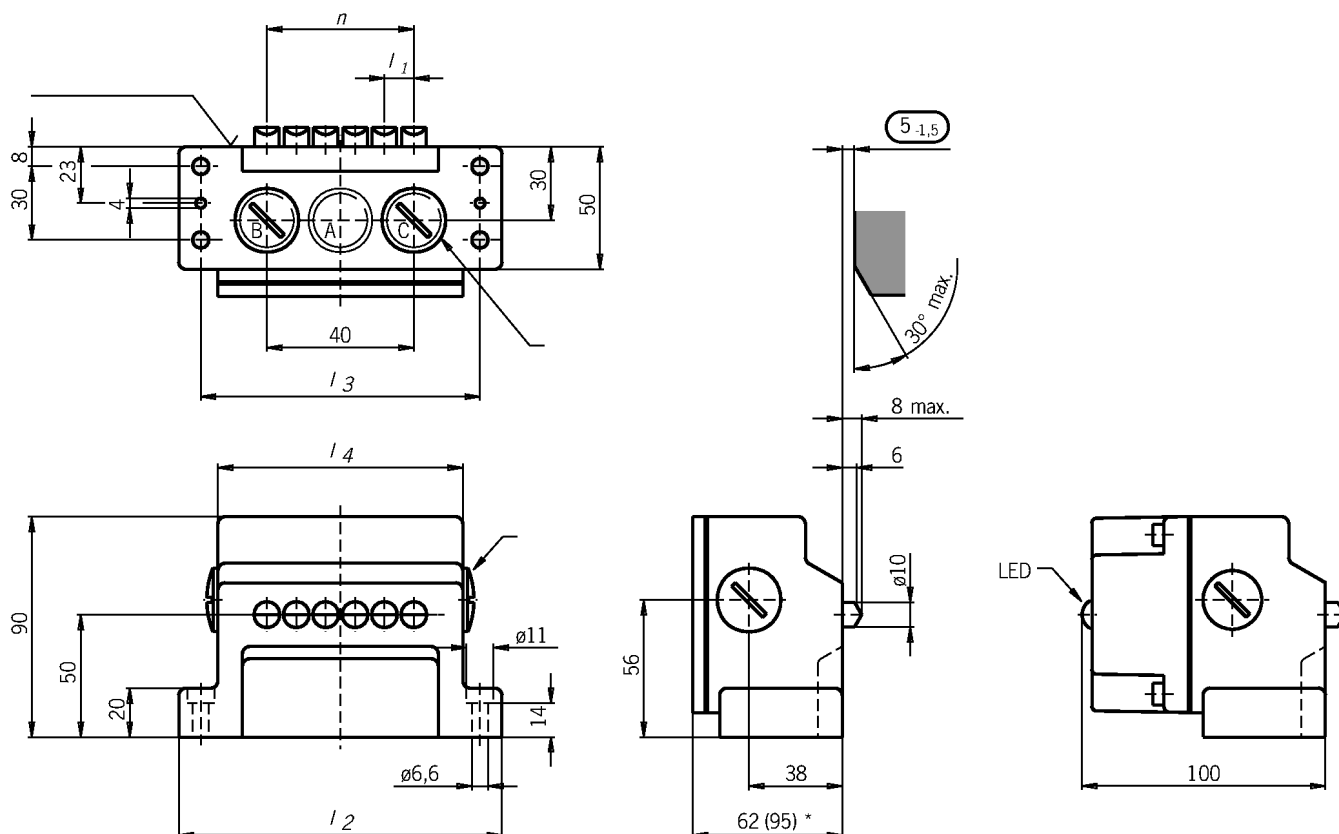
Switching elements

ES 502 E Snap-action switching contact 1 NC + 1 NO

ES 514 Snap-action switching contact 1 NC \rightarrow + 1 NO

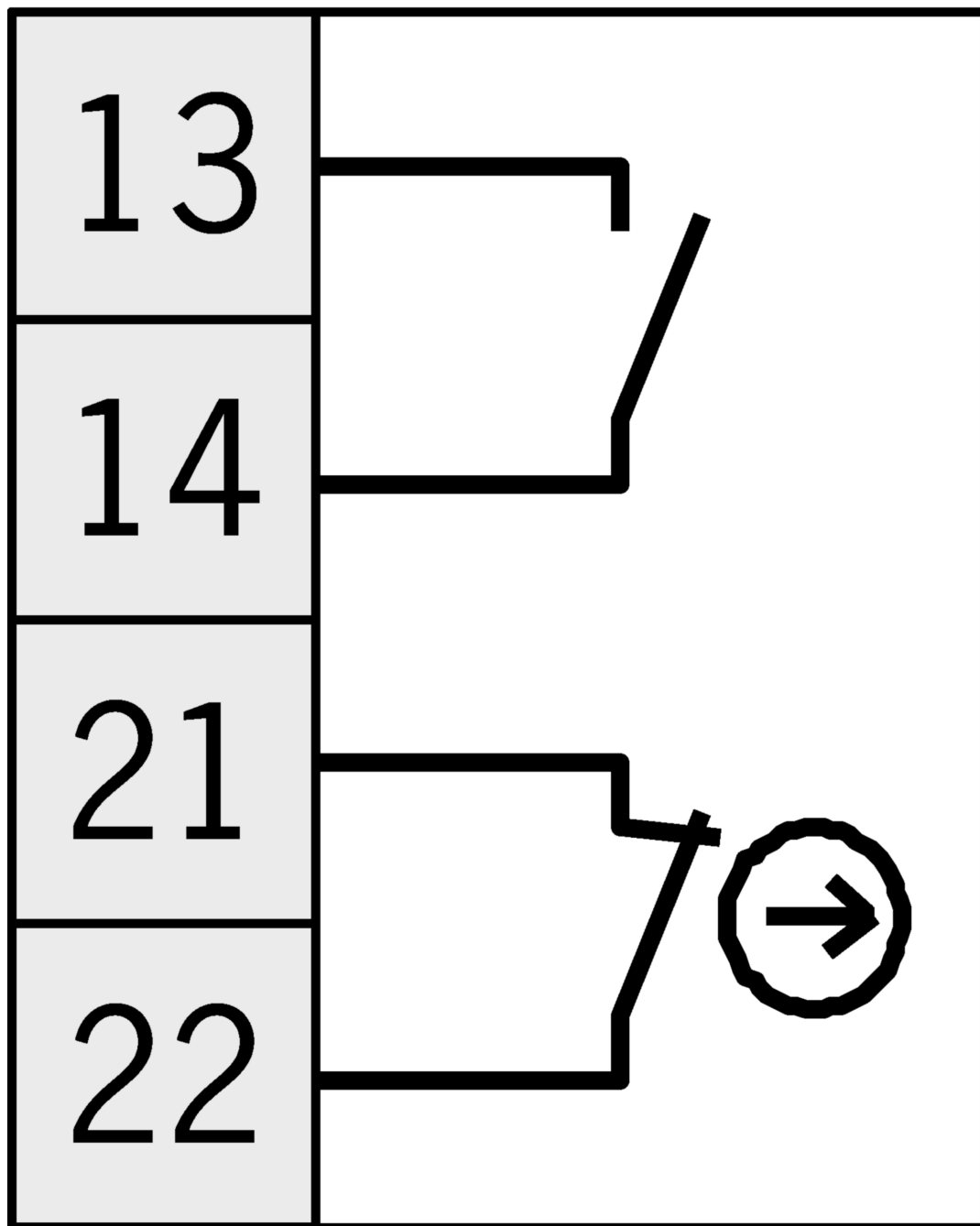
On the usage of safety switching elements, the dog distance $\textcircled{4-0.5}$ must be maintained to achieve the positively driven travel. The dogs must be positively mounted according to EN ISO 14119, i.e. riveted, welded or secured in some other way against becoming loose.

Dimensional drawings



Connection examples

ES 514



Connection examples

ES 502 E

