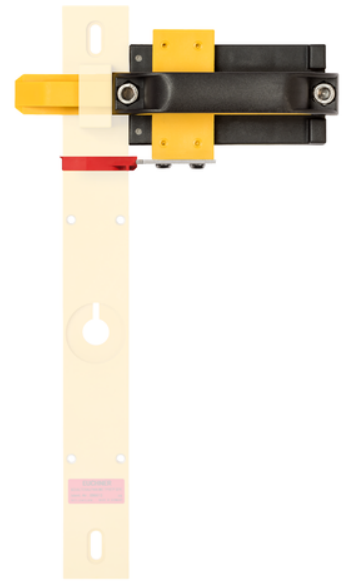


RIEGEL CTP–GFK (Order no. 123657)

Bolt CTP–GFK for safety switch CTP

- ▶ Fiber glass reinforced plastic bolt
- ▶ For doors hinged on the left or right
- ▶ Can be locked in open position with padlocks
- ▶ Actuator included



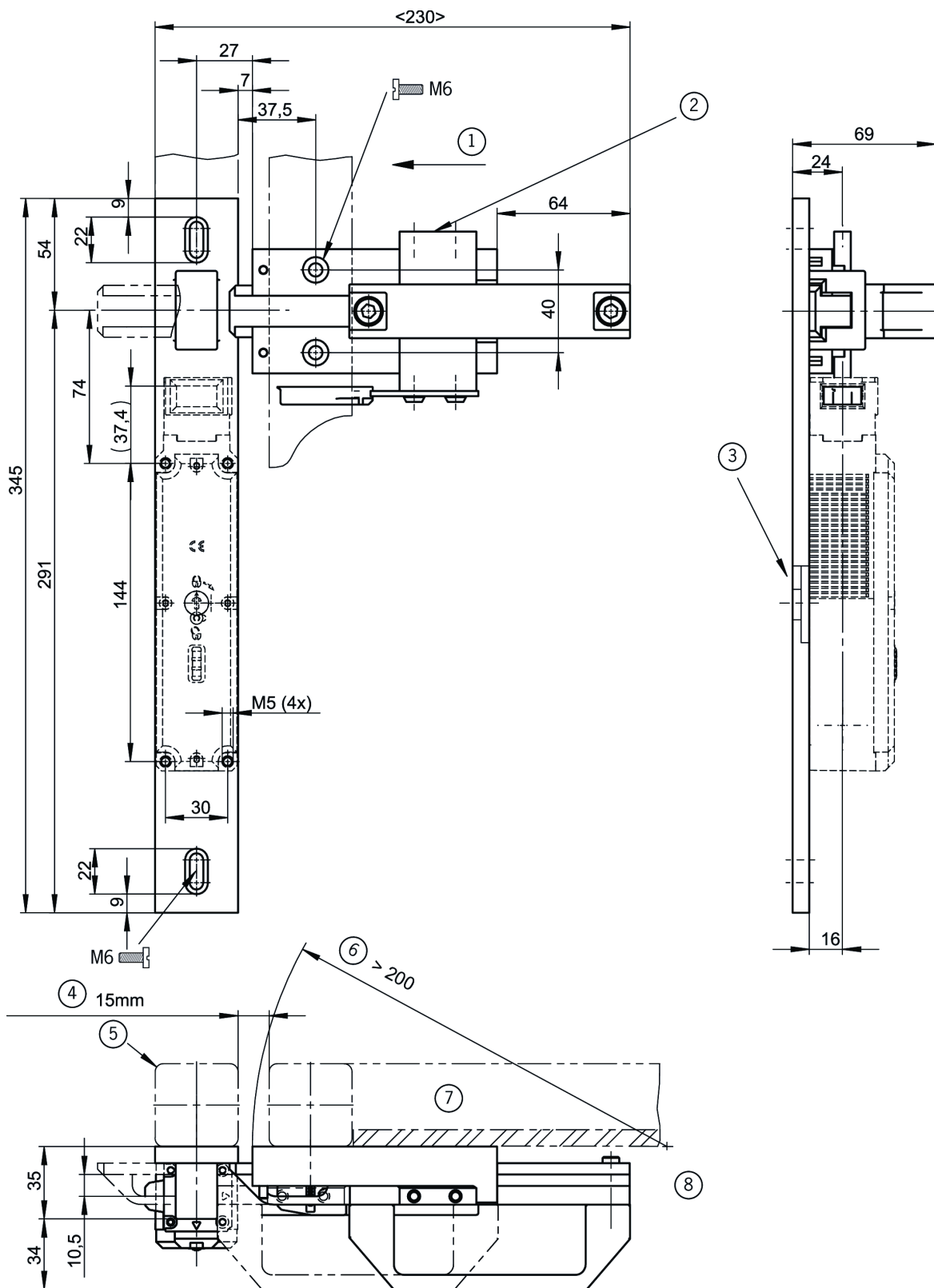
Benefits

- ▶ Light, compact construction
- ▶ Easily mounted to standard aluminum profiles and machine covers by screw connection
- ▶ Distinctive yellow color for easy recognition
- ▶ No additional door handle necessary

Notes

- ▶ Functions only in conjunction with switch bracket TP/STP GFK
- ▶ Order safety switch separately
- ▶ Order switch bracket separately

Dimensional drawings



1 Approach direction A

2 For doors hinged on the left the actuator is to be mounted on this side and the approach direction for the switch and bolt changed.

3 Cut-out for switch with escape release

4 Door gap

5 Safety guard frame (40x40)

6 Door radius

7 Door hinged on the right