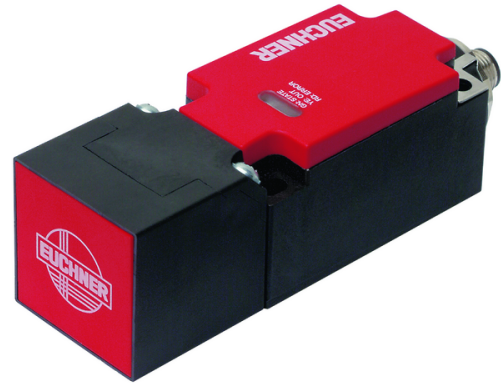


CES-A-C5E-01 (Order no. 077750)

Non-contact safety switch CES-A-C5...

- ▶ Safety switch with integrated evaluation electronics
- ▶ Pulsed signals can be switched
- ▶ 2 safety outputs (semiconductor outputs)
- ▶ Category 3 / PL e according to EN ISO 13849-1
- ▶ Unicode



Approach direction

Can be adjusted in 90° steps

Unicode evaluation

Each actuator is highly coded (unicode). The switch detects only taught-in actuators. Additional actuators can be taught-in.

Category according to EN ISO 13849-1

Due to two redundantly designed semiconductor outputs (safety outputs) with internal monitoring suitable for:

- ▶ Category 3 / PL e according to EN ISO 13849-1

LED indicator

STATE Status LED

OUT/ERROR Safety outputs status / diagnostics LED (combined)

Additional connection

OUT Monitoring output (semiconductor)

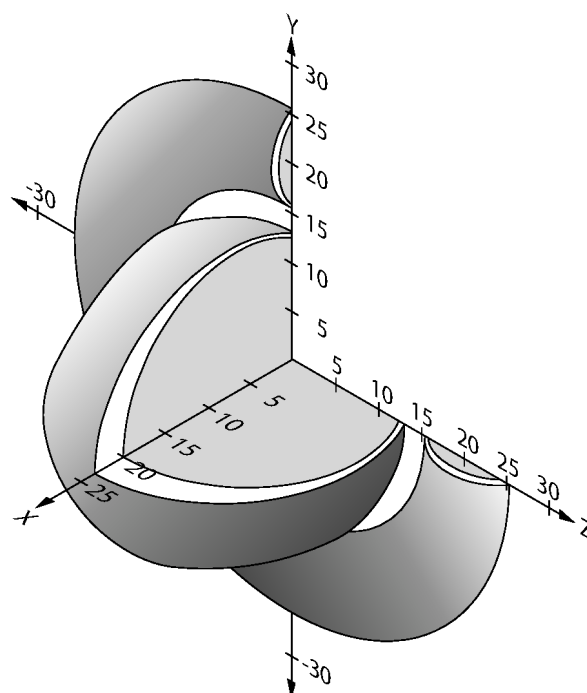
Typical actuating ranges

Attention:

The actuating range may vary depending on the substrate material and installation situation.

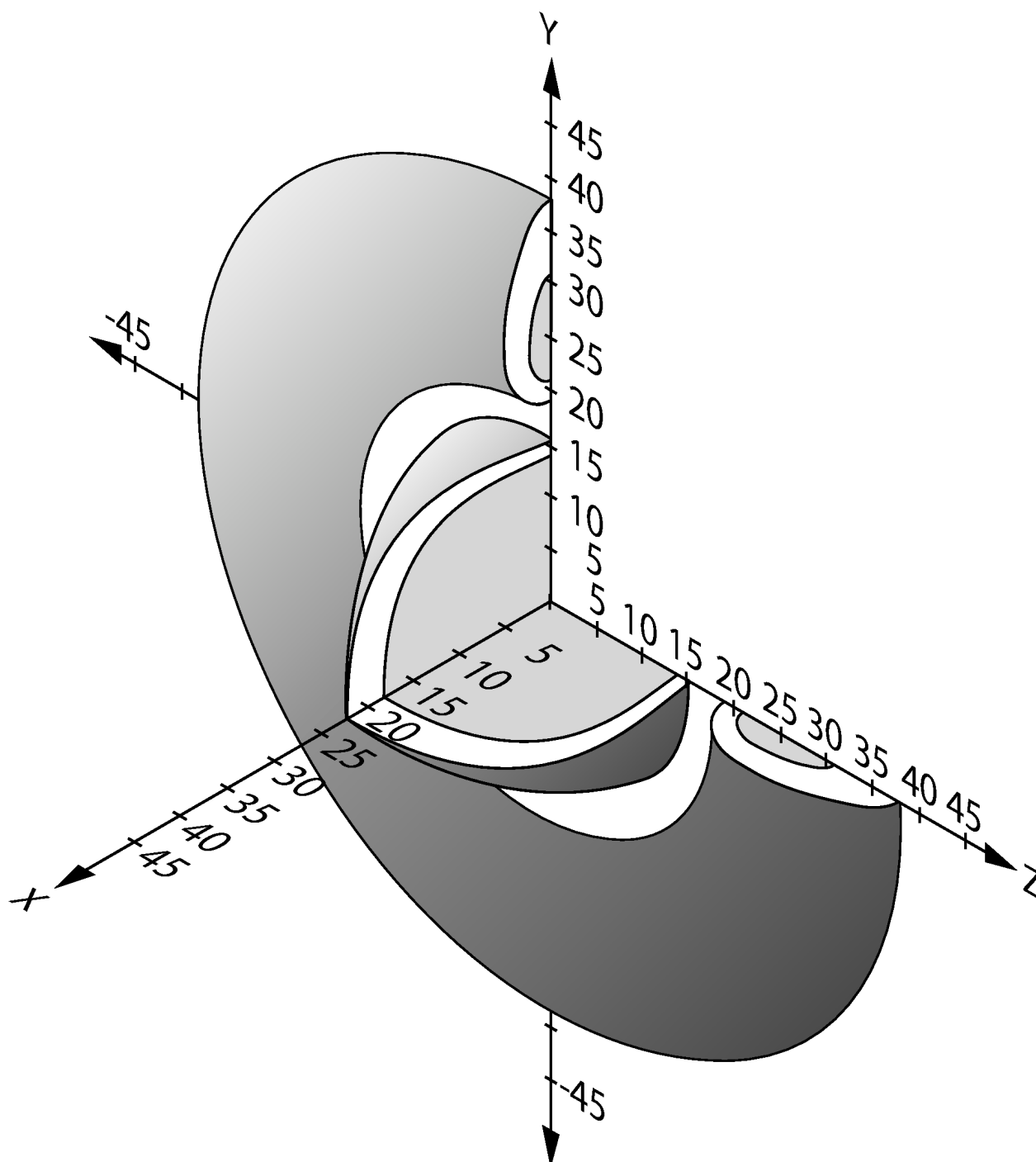
Typical operating distance

(Only in combination with actuator CES-A-BBA, CES-A-BCA)



For a side approach direction for the actuator and safety switch, a minimum distance of $s = 4 \text{ mm}$ must be maintained so that the actuating range of the side lobes is not entered.

Typical operating distance (Only in combination with actuator CES-A-BPA)



For a side approach direction for the actuator and safety switch, a minimum distance of $s = 6 \text{ mm}$ must be maintained so that the actuating range of the side lobes is not entered.