

Series KC...

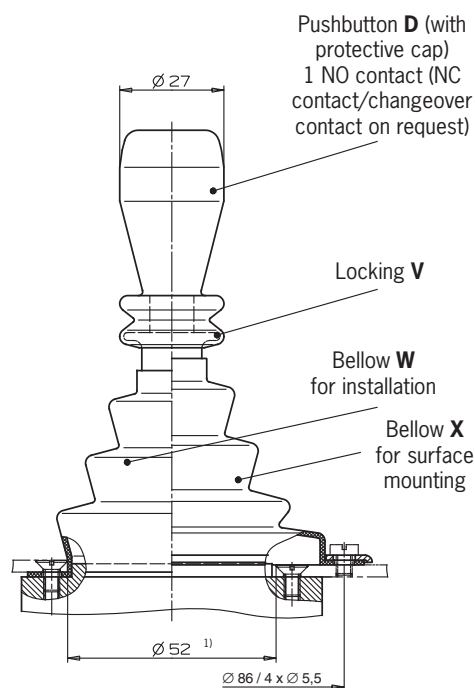
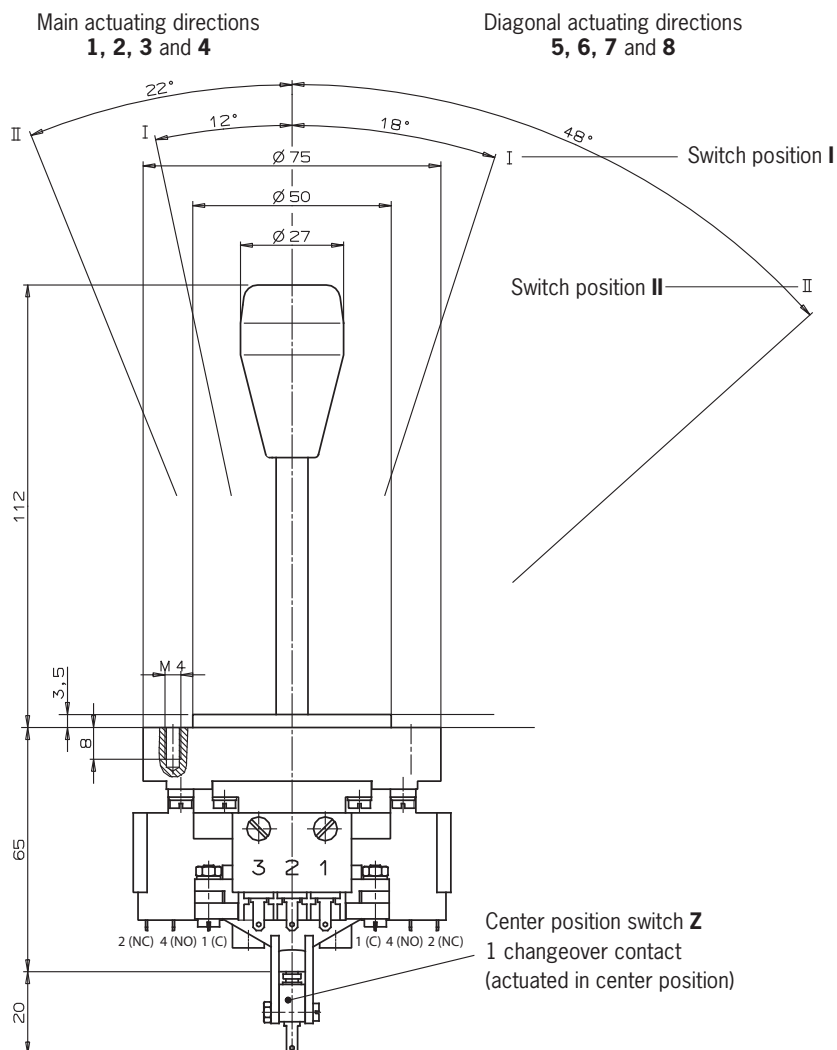
Germanischer Lloyd

Certificate no. 17 041 - 00 HH



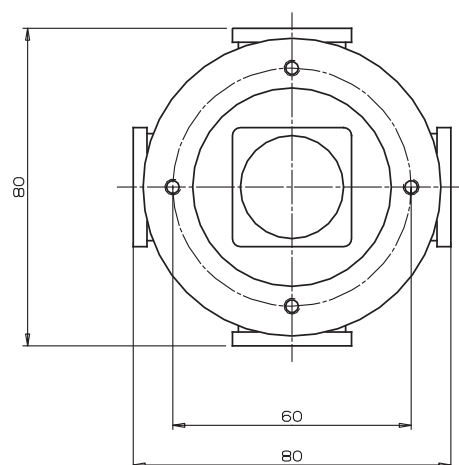
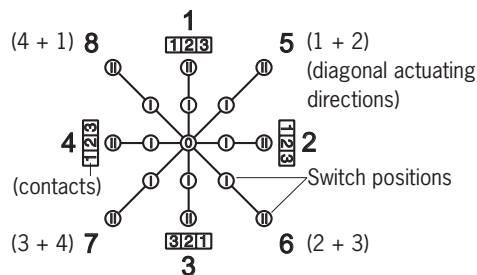
- ▶ Front panel installation at rear or with front panel
- ▶ 1 to 8 actuating directions with 1 or 2 switch positions for each actuating direction
- ▶ Switch positions as stayput switch or spring return switch in various combinations
- ▶ Center position switch
- ▶ Pushbutton in handle

Dimension drawing



Actuating directions

Top view of actuating lever



Technical data

Parameter	Value	Unit
Housing material	Reinforced thermoplastic/aluminum	
Switching lever material	Galvanized steel	
Degree of protection acc. to IEC 529	IP 65/IP 50	
Actuating side with/without bellow		
Mounting	Front panel installation at rear or with front panel	
Weight	Approx. 0.75	kg
Mechanical life	1x10 ⁶ operating cycles	
Ambient temperature with spring return switch	-5 to +65	°C
Ambient temperature with stayput switch	-25 to +65	°C
Storage temperature	-40 to +50	°C
Max. number of switching elements	3 per direction	
Connection	Tab connector 2.8 x 0.5 IEC 760 (ES 584) Screw terminal (ES 556)	
Switching contacts	Changeover contact C IEC 947-5-1	
Switching principle	Snap-action contact element, design ES 584 or ES 556	
Rated insulation voltage U _i	250	V
Rated impulse withstand voltage U _{imp}	2.5	kV
Utilization category AC 15	230 V/4 A	
Utilization category DC 13	24 V/2 A	
Switching current, min., at 24 V	12	mA
Switching voltage, min.	10	V
Contact material	Silver alloy	
Short circuit protection (control circuit fuse)	T6/F10	A
Max. number of actuating directions	8	
All-round actuation R (spring return switch only)	Actuation of one switching element (vertically or horizontally) or two adjacent switching elements (diagonally) at the same time	
Switch positions per direction	1 or 2	
Stayput switch S (latching)	According to order designation	
Spring return switch T (automatic return)	According to order designation	
Bellow W, X	Option	
Locking V in center position or position I	Option	
Center position switch Z	Option (1 changeover contact)	
Pushbutton D	Option	
Degree of protection acc. to IEC 529	IP 65	
Life	5x10 ⁴ operating cycles at 0.7 A/250 V AC	
Switching contacts	1 x NO contact (NC contact/changeover contact on request)	
Utilization category AC 15	230 V/2 A	
Utilization category DC 13	24 V/1 A	
Switching current, min., at 24 V	12	mA
Switching voltage, min.	10	V
Actuating force	< 8	N
Actuating travel	Approx. 3	mm

Ordering examples (see ordering codes, page 18)

Joystick switch series **KC** with tab connector, main actuating direction 1 with 3 switching elements. As spring return switch in switch position I. As stayput switch in switch position II. Main actuating directions 2 and 4 with 2 switching elements each. As stayput switch in switch positions I and II. Main actuating direction 3 not used. Option **V1** (mech. locking of switch position I to switch position II)

KCA3A5C005C0000V1

Joystick switch series **KC** with screw terminal, main actuating directions **1-4** as stayput switch **S** with one switching element each, diagonal actuating directions **5-8**, pushbutton **D**, bellow **W** for installation.

KCB4E4E4E5678DW

Series KC...

Switching characteristics ¹⁾

- Stayput switch (switching lever latches in selected position)
- ⊕ Spring return switch (switching lever returns to initial position)

Order code	Switch position	
	I	II
1	⊕	–
2	⊕	⊕
3	⊕	●
4	●	–
5	●	●
6	●	⊕

Switching functions ²⁾

			Contact state in switch position					
			0	I	II			
A	1					F	1	
	2						2	
	3						3	
B	1					G	1	
	2						2	
	3						3	
C	1					H	1	
	2						2	
	3						3	
D	1					K	1	
	2						2	
	3						3	
E	1							
	2							
	3							

Ordering code

Series

Connection

Tab connector 2.8 x 0.5 IEC 760
Screw terminal

Main actuating direction 1

Switching characteristics ¹⁾
Switching function ²⁾

Main actuating direction 2

Switching characteristics ¹⁾
Switching function ²⁾

Main actuating direction 3

Switching characteristics ¹⁾
Switching function ²⁾

Main actuating direction 4

Switching characteristics ¹⁾
Switching function ²⁾

Diagonal actuating direction 5 ³⁾

Diagonal actuating direction 6 ³⁾

Diagonal actuating direction 7 ³⁾

Diagonal actuating direction 8 ³⁾

Options

Pushbutton in handle
Bellow for installation
Bellow for surface mounting
Center switch position 0 locking
Switch position I to II locking
Center position switch
All-round actuation

D
W
X
V0
V1
Z
R

1) See "Switching characteristics" table. Actuating directions that are not required must be marked with "0".

2) See "Switching functions" table.

3) Simultaneous actuation of 2 adjacent switching elements in diagonal actuating directions.