

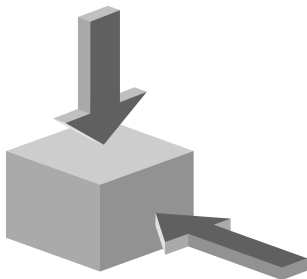
STA4A-2131A024MF-EX (Order no. 115585)

Safety switch STA with door monitoring contact, ATEX

- ▶ ATEX version
- ▶ Suitable for use in zones 2 and 22 (gases and dusts)
- ▶ Auxiliary release on the front
- ▶ With door monitoring contact



Approach direction



Horizontal and vertical
Can be adjusted in 90° steps

Solenoid operating voltage

- ▶ AC/DC 24 V +10%, -15%

Guard locking type

STA4 Open-circuit current principle, guard locking by applying voltage to the guard locking solenoid.
Release by spring force.

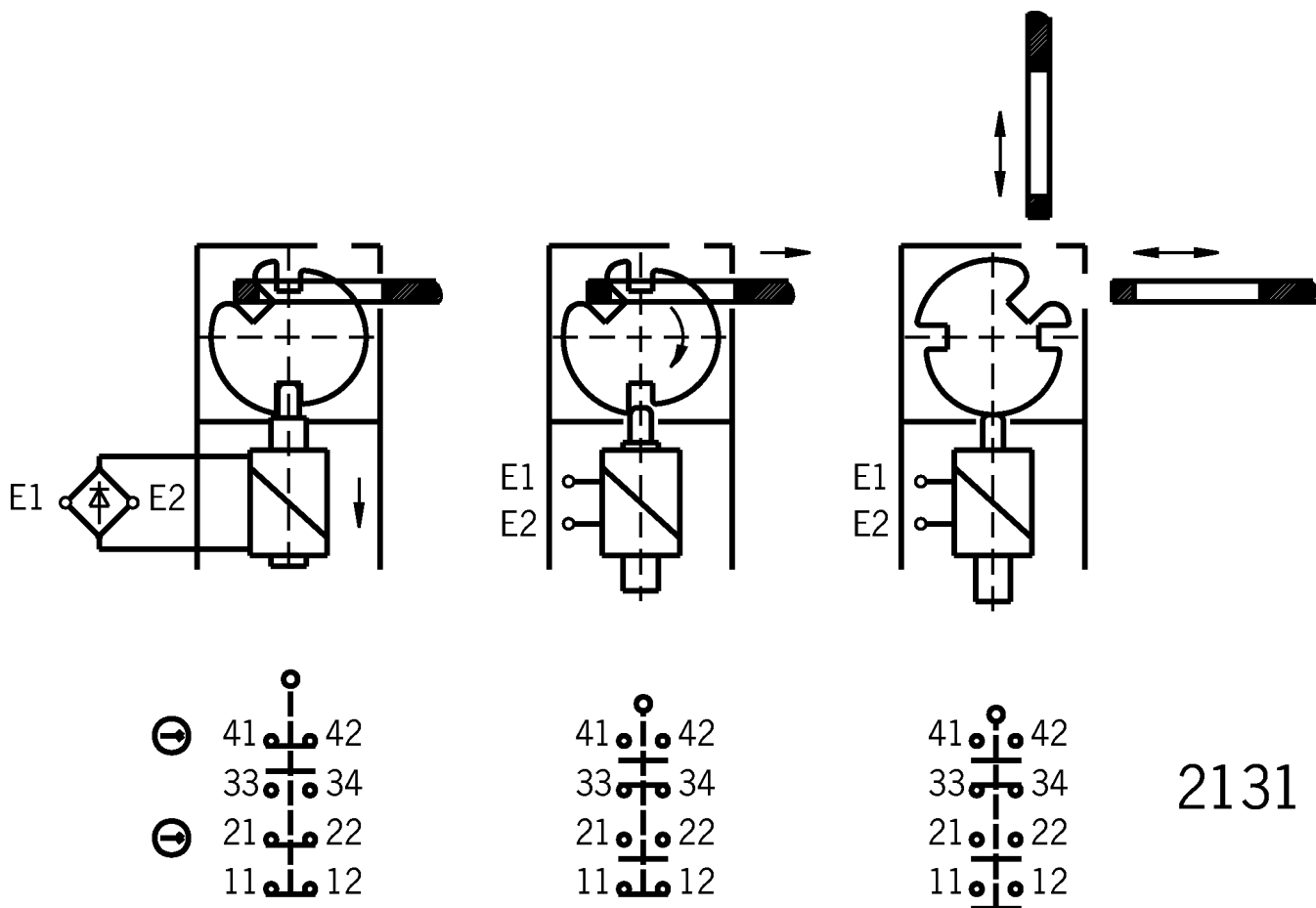
Switching element

2131 Slow-action switching contact 2 NC \ominus + 1 NO + 1 NC (door monitoring contact)

Auxiliary release

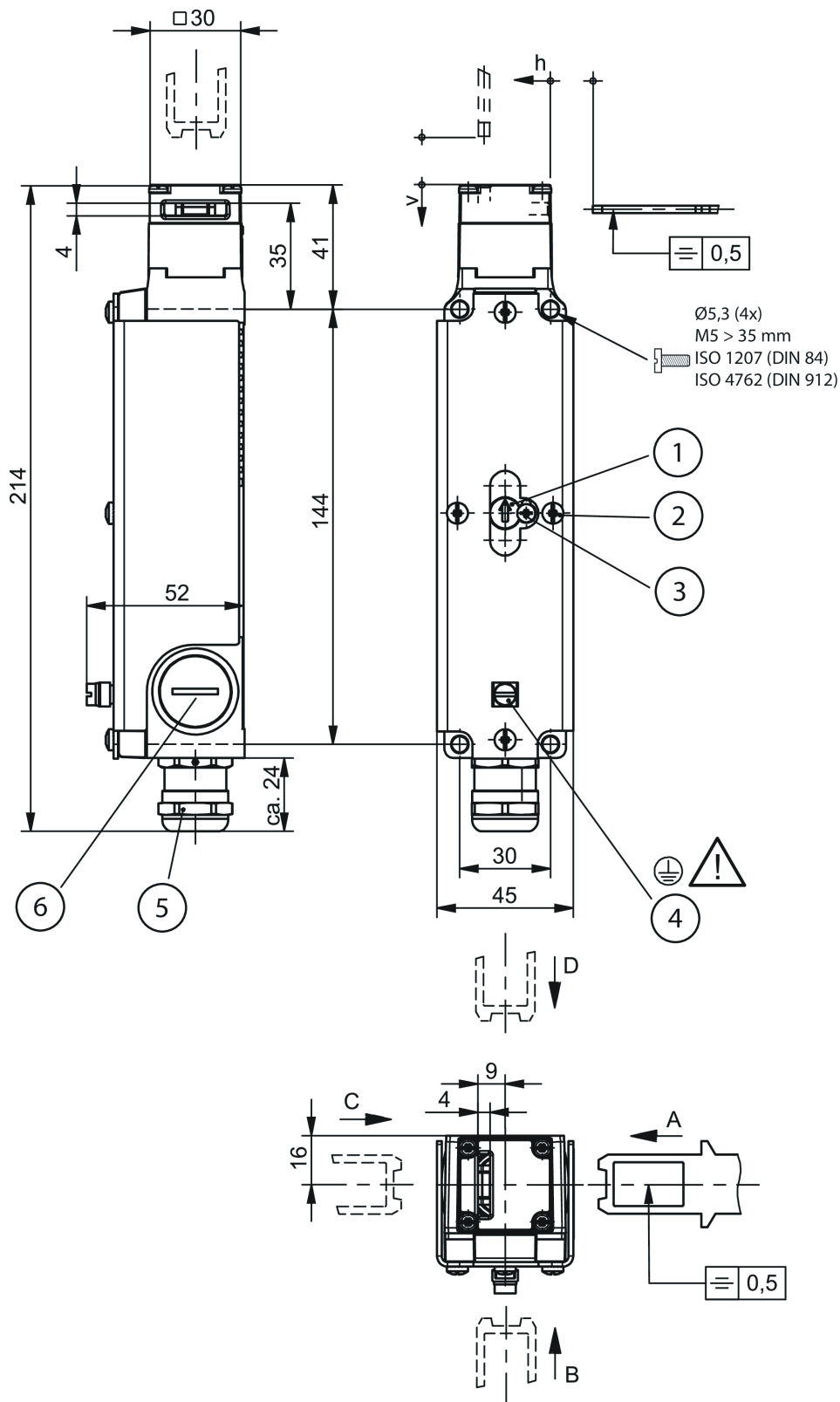
This is used for releasing the guard locking with the aid of a tool. To protect against tampering, the auxiliary release is sealed with sealing lacquer.

Functional drawings



2131

Dimensional drawings



1 Auxiliary release

2 Cover screw (4x M = 1.5 Nm)

3 Locking screw

4 Ground the switch via the terminal on the protective plate to prevent electrostatic charging (conductor cross-section 4 mm²)