

C-MINF12-12X1,0PU03,6-MA-100967 (Order no. 100967)

Connecting cable with plug connector MR12, 12-pin, 3.6 m

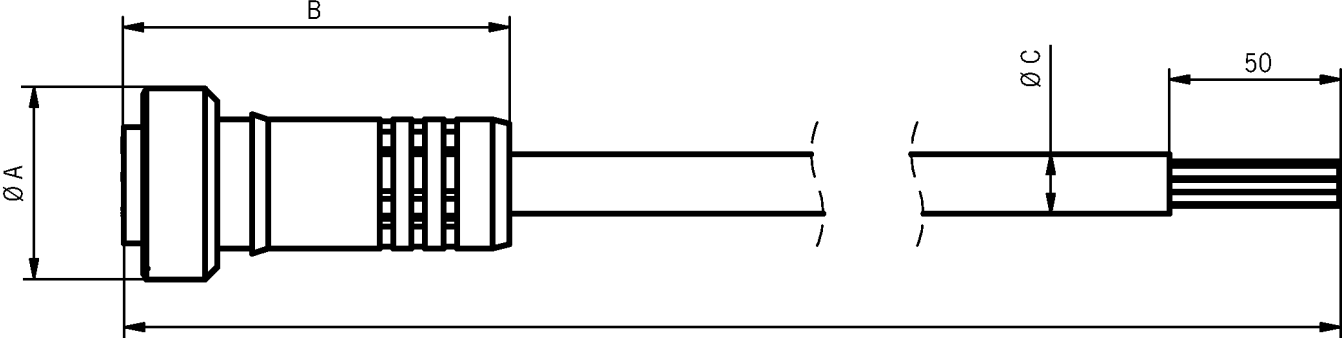
- ▶ MR12 female plug, 12-pin
- ▶ Straight plug connector
- ▶ PUR cable
- ▶ Cable length 3.6 m
- ▶ With flying lead



Connector assignment

| | | |
|--|----|-------|
| | 1 | OG |
| | 2 | BU |
| | 3 | WH/BK |
| | 4 | RD/BK |
| | 5 | GN/BK |
| | 6 | OG/BK |
| | 7 | BU/BK |
| | 8 | BK/WH |
| | 9 | GN/YE |
| | 10 | RD |
| | 11 | WH |
| | 12 | BK |

Dimensional drawings



Dimension A \varnothing 32 Dimension B 64 Dimension C \varnothing 9.8

Technical data

Approvals



Electrical connection values

| | |
|---------------|-------|
| Rated voltage | 300 V |
|---------------|-------|

Mechanical values and environment

| | |
|-------------------------|---------------|
| Conductor cross-section | 18 AWG |
| Number of conductors | 12 |
| Storage temperature | -40 ... 80 °C |
| Cable type | straight |
| Cable diameter | 10.4 mm |
| Cable length | 3.6 m |
| Drag chain suitability | No |
| Ambient temperature | -40 ... 80 °C |
| Material | |
| Sheath | PUR |

Connection 2

| | |
|-----------------|-----------------|
| Conductor end | Sheath stripped |
| Connection type | flying lead |

Connection 1

| | |
|----------------------|----------------------|
| Connection type | Plug connector BHA12 |
| Connection type | Female plug |
| Cable outlet | straight |
| Number of pins | 12 |
| Degree of protection | IP67 |
| Plug lock | Screw connection |

Material

Plug housing Plastic