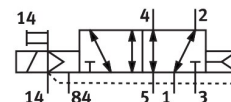
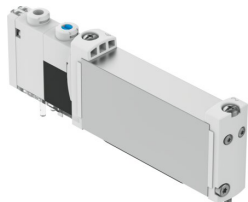


# Solenoid valve

## VUVG-B14-M52-AZT-F-1T1L-F1A

Part number: 8150400

**FESTO**



## Data sheet

Feature	Value
Valve function	5/2-way, monostable
Type of actuation	Electric
Valve size	14 mm
Standard nominal flow rate (standardised to DIN 1343)	500 l/min
pneumatic working port	Flange
Operating voltage	24V DC
Operating pressure	-0.09 MPa...1 MPa -0.9 bar...10 bar
Design	Piston gate valve
Type of reset	Pneumatic spring
Approval	c UL us - Recognized (OL)
Degree of protection	IP40
Exhaust-air function	With flow control option
Sealing principle	Soft
Mounting position	optional
Manual override	Detenting Non-detenting
Type of piloting	Pilot actuated
Pilot air supply	External
Flow direction	Reversible
lap	Overlap
Signal status display	LED
Pilot pressure	0.15 MPa...0.8 MPa 1.5 bar...8 bar
Max. switching frequency	3 Hz
Switching time off	26 ms
Switching time on	13 ms
Duty cycle	100%
Max. positive test pulse with 0 signal	1600 µs
Max. negative test pulse with 1 signal	3000 µs
Characteristic coil data	22 V DC: 1.0 W
Permissible voltage fluctuations	+/- 10 %

Feature	Value
Operating medium	Compressed air to ISO 8573-1:2010 [7:4:4]
Note on operating and pilot medium	Lubricated operation possible (in which case lubricated operation will always be required)
Vibration resistance	Transport application test with severity level 2 to FN 942017-4 and EN 60068-2-6
Shock resistance	Shock test with severity level 2 to FN 942017-5 and EN 60068-2-27
Corrosion resistance class CRC	0 - No corrosion stress
LABS (PWIS) conformity	VDMA24364 zone III
Suitability for the production of Li-ion batteries	Suitable for battery production with reduced Cu/Zn/Ni values (F1a)
Cleanroom suitability, measured according to ISO 14644-14	Class 6 according to ISO 14644-1
Media temperature	-5 °C...60 °C
Pilot medium	Compressed air to ISO 8573-1:2010 [7:4:4]
Ambient temperature	-5 °C...60 °C
Product weight	91 g
Electrical connection	Via sub-base
Type of mounting	On manifold rail
Note on materials	RoHS-compliant
Material seals	HNBR NBR
Material housing	Wrought aluminium alloy