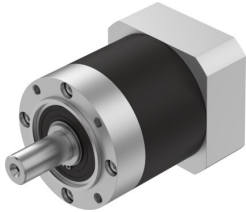


Gear unit EMGA-120-P-G12-SAS-100

Part number: 8141754

FESTO



Data sheet

Feature	Value
Gear unit flange size	120 mm
Motor flange size	100 mm
Torsional backlash	0.15 deg
Type of gear unit	Planetary gear
Gear unit ratio	12:1
Max. drive speed	6500 rpm
Operating temperature of gear unit	-25 °C...90 °C
LABS (PWIS) conformity	VDMA24364-B2-L
Degree of protection	IP54
Continuous output torque	260 Nm
Mass moment of inertia of gear unit	2.224 kgcm ²
Max. output torque	416 Nm
Max. efficiency	96 %
Torsional rigidity	22 Nm/arcmin
Product weight	8000 g
Permissible axial shaft load	2500 N
Permissible radial shaft load	1750 N
Gear unit interface, output shaft	120G
Gear unit interface, drive shaft	100A
Note on materials	RoHS-compliant