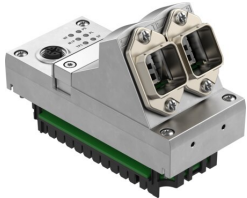


Interface CPX-M-FB44

Part number: 8110370

FESTO



Data sheet

| Feature | Value |
|--------------------------------|---|
| Protocol | PROFINET IRT PROFINET RT |
| Dimensions (W x L x H) | (incl. interlinking block) 50 x 107 x 80 mm |
| Product weight | 280 g |
| Ambient temperature | -5 °C...50 °C |
| Storage temperature | -20 °C...70 °C |
| Degree of protection | IP65 IP67 |
| Corrosion resistance class CRC | 0 - No corrosion stress |
| LABS (PWIS) conformity | VDMA24364-B2-L |
| Approval | RCM trademark |
| Note on materials | RoHS-compliant |
| Material housing | Die-cast aluminium |
| LED display, product-specific | M: Modify, parameterisation PL: Load supply PS: Electronics supply, sensor supply SF: System fault |
| LED display, bus-specific | M/P: maintenance/PROFIenergy NF: Network fault TP1: Network active port 1 TP2: Network active port 2 |
| Device-specific diagnostics | Channel-oriented and module-oriented diagnostics Undervoltage of modules Diagnostic memory |
| Operator controls | DIL switch |
| Field bus interface | 2x RJ45 push-pull socket, AIDA |
| Max. address volume, inputs | 64 Byte |
| Max. address volume, outputs | 64 Byte |
| Parameterisation | Diagnostic behaviour Fail-safe response Forcing of channels Signal setup System parameter |
| Baud rate | 100 Mbit/s |
| Configuration support | GSDML file |

| Feature | Value |
|--|---|
| Additional functions | Acyclic data access via fieldbus Asynchronous data access via Ethernet Fast start-up (FSU) I&M Channel-oriented diagnostics via fieldbus LLDP MQTT MRP MRPD PROFlenergy PROFlsafe S2 system redundancy Start-up parameterisation in plain text via fieldbus System status can be mapped using process data Additional diagnostic interface for operator units |
| Operational voltage range DC | 18 V...30 V |
| Nominal operating voltage DC | 24 V |
| Intern power consumption nominal operating voltage | Typ. 70 mA |