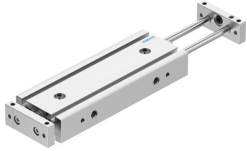


Twin cylinder DGTZ-GF-6-40-J-T-P-A

Part number: 8103470

FESTO



Data sheet

| Feature | Value |
|--|--|
| Stroke | 40 mm |
| Adjustable end-position range/length | 10 mm |
| Piston diameter | 6 mm |
| Operating mode, drive unit | Two yokes |
| Cushioning | Elastic cushioning rings/plates at both ends |
| Mounting position | optional |
| Guide | Plain-bearing guide |
| Design | Guidance |
| Position detection | Via proximity switch |
| Operating pressure | 0.2 MPa...0.8 MPa 2 bar...8 bar |
| Mode of operation | Double-acting |
| Operating medium | Compressed air to ISO 8573-1:2010 [7:4:4] |
| Note on operating and pilot medium | Lubricated operation possible (in which case lubricated operation will always be required) |
| Corrosion resistance class CRC | 1 - Low corrosion stress |
| LABS (PWIS) conformity | VDMA24364 zone III |
| Cleanroom suitability, measured according to ISO 14644-14 | Class 5 according to ISO 14644-1 |
| Ambient temperature | -10 °C...80 °C |
| Impact energy in end positions | 0.01 Nm |
| Max. effective load dependent upon stroke at defined distance xs | 1.5 N |
| Theoretical force at 0.6 MPa (6 bar, 87 psi), return stroke | 18.6 N |
| Theoretical force at 0.6 MPa (6 bar, 87 psi), advance stroke | 18.6 N |
| Moving mass | 41.5 g |
| Product weight | 180 g |
| Pneumatic connection | M5 |
| Note on materials | RoHS-compliant |
| Material cover | Wrought aluminium alloy |
| Material seals | NBR |
| Material housing | Anodised wrought aluminium alloy |
| Material piston rod | High-alloy stainless steel |