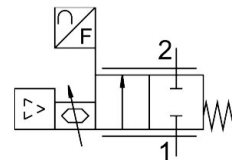


Proportional flow control valve VEMD-L-6-14-20-D21-M5-5-R1-V4

Part number: 8086473

FESTO



Data sheet

Feature	Value
Size	10
Degree of protection	IP40
Note on degree of protection	IP51 with horizontal installation
Flow rate control range	0 l/min...20 l/min
Note on the flow rate control range	The specified flow control range only applies at room temperature. At temperatures above room temperature, the max. adjustable flow may be reduced.
Flow direction	Non-reversible
Operating pressure	0 MPa...0.25 MPa 0 bar...2.5 bar
Overload pressure	0.6 MPa 6 bar 87 psi
Burst pressure	1 MPa 10 bar 145 psi
Accuracy of flow rate	± (4% o.m.v. + 1.25% FS)
Repetition accuracy in ± %FS	1 %FS
Hysteresis in ± %FS	2.5 %FS
Linearity error in ± %FS	2 %
Temperature coefficient	0.1 %/K
Valve function	2-way proportional flow control valve
Nominal size	1.4 mm
Pneumatic connection, port 1	Female thread M5
Pneumatic connection, port 2	Female thread M5
Medium	Argon Compressed air to ISO 8573-1:2010 [5:4:1] Carbon dioxide Oxygen (oxygen applications to IEC 60601-1 only on request) Nitrogen
Note on the medium	Lubricated operation not possible
Special characteristics	Oxygen-compatible to DIN EN 1797
Environmental conditions	Not suitable for use in an environment enriched with oxygen to IEC 60601-1
Duty cycle	100%

Feature	Value
Media temperature	5 °C...40 °C
Ambient temperature	0 °C...50 °C
Storage temperature	-20 °C...70 °C
Nominal operating voltage DC	12 V
Operational voltage range DC	11.1 V...13.2 V
Max. current consumption	65 mA
Max. electrical power consumption	1 W
Electrical connection	4-pin M8x1 A-encoded to EN 61076-2-104 Plugs
Setpoint value	0.2 - 10 V
Signal range analogue input	0.2 - 10 V
Signal range analogue output	0.2 - 10 V
Reverse polarity protection	For operating voltage connections
Product weight	92 g
Material seals	EPDM NBR
Material cover	PA-reinforced
Note on materials	RoHS-compliant
Dimensions (W x L x H)	37 x 70 x 31 mm
Type of mounting	Direct mounting via thread
Mounting position	optional
Approval	RCM trademark
Conforms to standard	EN 61000-6-2 (EMC) EN 61000-6-3 (EMC)
KC mark	KC-EMV
CE mark (see declaration of conformity)	To EU EMC Directive In accordance with EU RoHS Directive
UKCA marking (see declaration of conformity)	To UK instructions for EMC To UK RoHS instructions
LABS (PWIS) conformity	VDMA24364 zone III