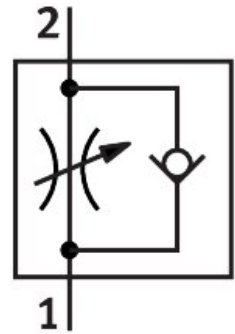


# One-way flow control valve VFOE-LE-T-G12-Q12

Part number: 8068733

FESTO



## Data sheet

Feature	Value
Valve function	Exhaust air one-way flow control function
Pneumatic connection, port 1	QS-12
Pneumatic connection, port 2	G1/2
Type of actuation	Manual
Adjustment component	Rotary knob with detent
Type of mounting	Screw-in
Standard nominal flow rate in flow control direction	1200 l/min
Standard nominal flow rate in blocked direction	600 l/min...1200 l/min
Ambient temperature	-10 °C...60 °C
Material housing	PBT
Explosion protection	The information in the certificate must be observed! Zone 1 (ATEX) Zone 2 (ATEX) Zone 21 (ATEX) Zone 22 (ATEX)
Mounting position	optional
Width across flats	24 mm
Rotatability	360°/no continuous swivelling permissible
Operating pressure complete temperature range	0.02 MPa...1 MPa 0.2 bar...10 bar 2.9 psi...145 psi
Standard flow rate in flow control direction 0.6->0 MPa (6->0 bar, 87->0 psi)	1900 l/min
Standard flow rate in non-return direction 0.6->0 MPa (6->0 bar, 87->0 psi)	1400 l/min...2000 l/min
Operating medium	Compressed air to ISO 8573-1:2010 [7:4:4]
Note on operating and pilot medium	Lubricated operation possible (in which case lubricated operation will always be required)
LABS (PWIS) conformity	VDMA24364 zone III

<b>Feature</b>	<b>Value</b>
Cleanroom suitability, measured according to ISO 14644-14	Class 4 according to ISO 14644-1
Media temperature	-10 °C...60 °C
Max. tightening torque	18 Nm
Nominal torque	15 Nm
Tolerance for nominal tightening torque	± 20%
Product weight	49.5 g
Note on materials	RoHS-compliant
Material cover	PBT
Material dynamic seals	HNBR
Material threaded bolt	Galvanised steel
Material release ring	PBT
Material static seals	NBR