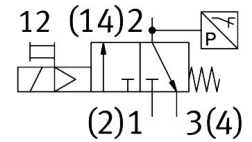
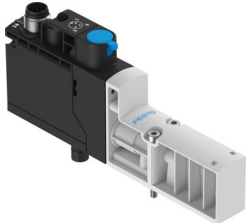


# Solenoid valve

## VSVA-BT-M32CS2-MYE-A2-1T1L-PZ

Part number: 8066572

FESTO



## Data sheet

Feature	Value
Valve function	3/2-way, closed, monostable
Type of actuation	Electric
Construction width	18 mm
Standard nominal flow rate (standardised to DIN 1343)	125 l/min
Standard nominal flow rate for exhaust	125 l/min
Operating pressure	0.3 MPa...1 MPa 3 bar...10 bar
Design	Poppet seat
Type of reset	Mechanical spring Pneumatic spring
Degree of protection	IP65
Sealing principle	Soft
Mounting position	optional
Manual override	Detenting Self-resetting via electrical control signal
Type of piloting	Pilot actuated
Pilot air supply	Internal
Flow direction	Non-reversible
lap	Underlap
Additional functions	Holding current reduction
Signal status display	Yellow LED, valve control Green LED, pressure switch, exhausted status
Switching position sensing	Via pressure switch, exhausted status
Duty cycle	100%
Max. positive test pulse with 0 signal	2000 µs
Max. negative test pulse with 1 signal	1200 µs
Nominal pick-up current per solenoid coil	60 mA to 35 ms
Nominal operating voltage DC	24 V
Nominal current with current reduction	11 mA after 35 ms
Characteristic coil data	24 V DC: 1.6 W
Permissible voltage fluctuations	+/- 10 %
Operating medium	Compressed air to ISO 8573-1:2010 [7:4:4]

Feature	Value
Note on operating and pilot medium	Lubricated operation not possible
Vibration resistance	Transport application test with severity level 2 to FN 942017-4 and EN 60068-2-6
Shock resistance	Shock test with severity level 2 to FN 942017-5 and EN 60068-2-27
Corrosion resistance class CRC	0 - No corrosion stress
LABS (PWIS) conformity	VDMA24364-B1/B2-L
Media temperature	-5 °C...50 °C
Pilot medium	Compressed air to ISO 8573-1:2010 [7:4:4]
Ambient temperature	-5 °C...50 °C
Mean time to failure (MTTF), subcomponent	443 years, pressure switch
Product weight	110 g
Switch-off point min.	0.05 bar
Switch-on point	0.2 bar
Switch-on point max.	0.3 bar
Electrical connection	Plug-in
Type of mounting	On sub-base
Pneumatic connection, port 2	G1/8
Pneumatic connection, port 4	G1/8
Note on materials	RoHS-compliant
Material seals	HNBR NBR
Material housing	PA-reinforced
Material screws	Galvanised steel
Switching element function	N/C contact