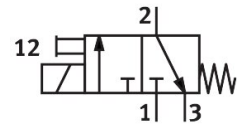
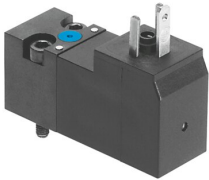


Solenoid valve

VSCS-B-M32-MH-WA-3AC1-8

Part number: 8040568

FESTO



Data sheet

Feature	Value
Valve function	3/2-way, closed, monostable
Type of actuation	Electric
Construction width	15 mm
Standard nominal flow rate (standardised to DIN 1343)	13.5 l/min
pneumatic working port	Sub-base size 15 mm to ISO 15218
Operating voltage	230V AC
Operating pressure	0.15 MPa...0.8 MPa 1.5 bar...8 bar 21.75 psi...116 psi
Type of reset	Mechanical spring
CE mark (see declaration of conformity)	To EU Low Voltage Directive
UKCA marking (see declaration of conformity)	To UK regulations for electrical equipment
Degree of protection	IP65
Sealing principle	Soft
Mounting position	optional
Conforms to standard	ISO 15218
Manual override	Non-detenting
Type of piloting	Direct
Flow direction	Non-reversible
lap	Underlap
Note on forced dynamization	Switching frequency min. 1/week
Switching time off	35 ms
Switching time on	8 ms
Duty cycle	100%
Characteristic coil data	230 V AC: 50/60 Hz, pick-up power 1.9 VA, holding power 1.3 VA
Permissible voltage fluctuations	+/- 10 %
Operating medium	Compressed air to ISO 8573-1:2010 [7:4:4]
Note on operating and pilot medium	Lubricated operation possible (in which case lubricated operation will always be required)
Vibration resistance	Transport application test with severity level 1 to FN 942017-4 and EN 60068-2-6
Shock resistance	Shock test with severity level 1 to FN 942017-5 and EN 60068-2-27

Feature	Value
Corrosion resistance class CRC	2 - Moderate corrosion stress
LABS (PWIS) conformity	VDMA24364-C1-L
Media temperature	-5 °C...50 °C
Ambient temperature	-5 °C...50 °C
Electrical connection	Type C To DIN EN 175301-803
Pneumatic connection, port 1	Sub-base
Pneumatic connection, port 2	Sub-base
Pneumatic connection, port 3	Sub-base
Note on materials	RoHS-compliant
Material seals	NBR