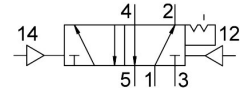


Pneumatic valve VUWS-LT30-B52-N38

Part number: 8036728

FESTO



Data sheet

Feature	Value
Valve function	5/2 bistable
Type of actuation	Pneumatic
Valve size	31 mm
Standard nominal flow rate (standardised to DIN 1343)	1800 l/min
pneumatic working port	3/8 NPT
Operating pressure	0.15 MPa...1 MPa 1.5 bar...10 bar
Design	Poppet seat
Approval	c UL us - Recognized (OL)
Nominal size	8.7 mm
Exhaust-air function	With flow control option
Sealing principle	Soft
Mounting position	optional
Manual override	None
Type of piloting	Direct
Pilot air supply	Internal
Flow direction	Non-reversible
lap	Underlap
Pilot pressure	0.15 MPa...1 MPa 1.5 bar...10 bar
Switching time reversal	13 ms
Explosion protection	The information in the certificate must be observed! Zone 1 (ATEX) Zone 2 (ATEX) Zone 21 (ATEX) Zone 22 (ATEX)
Operating medium	Compressed air to ISO 8573-1:2010 [7:4:4]
Note on operating and pilot medium	Lubricated operation possible (in which case lubricated operation will always be required)
Corrosion resistance class CRC	2 - Moderate corrosion stress
LABS (PWIS) conformity	VDMA24364-B1/B2-L
Cleanroom suitability, measured according to ISO 14644-14	Class 6 according to ISO 14644-1
Media temperature	-10 °C...60 °C

Feature	Value
Pilot medium	Compressed air to ISO 8573-1:2010 [7:4:4]
Ambient temperature	-10 °C...60 °C
Product weight	521 g
Type of mounting	Either: On manifold rail With through-hole
Breather connection	Not ducted
Pilot air port 12	1/8 NPT
Pilot air port 14	1/8 NPT
Pneumatic connection, port 1	3/8 NPT
Pneumatic connection, port 2	3/8 NPT
Pneumatic connection, port 3	3/8 NPT
Pneumatic connection, port 4	3/8 NPT
Pneumatic connection, port 5	3/8 NPT
Note on materials	RoHS-compliant
Material seals	HNBR NBR TPE-U(PU)
Material housing	Painted die cast aluminium
Material piston slide	Wrought aluminium alloy
Material screws	Galvanised steel