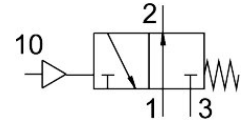


# Pneumatic valve VUWS-LT25-M32U-M-G14

Part number: 8035180

**FESTO**



## Data sheet

| Feature   | Value  |
|---|--|
| Valve function  | 3/2 open, monostable   |
| Type of actuation                                     | Pneumatic  |
| Valve size  | 26.5 mm  |
| Standard nominal flow rate (standardised to DIN 1343) | 1000 l/min   |
| pneumatic working port                                | G1/4   |
| Operating pressure                                    | -0.09 MPa...1 MPa<br>-0.9 bar...10 bar   |
| Design  | Poppet seat  |
| Type of reset   | Mechanical spring  |
| Approval  | c UL us - Recognized (OL)  |
| Nominal size  | 6.6 mm   |
| Exhaust-air function                                  | With flow control option   |
| Sealing principle                                     | Soft   |
| Mounting position                                     | optional   |
| Manual override                                       | None   |
| Type of piloting                                      | Direct   |
| Pilot air supply                                      | Internal   |
| Flow direction  | Non-reversible   |
| lap   | Underlap   |
| Pilot pressure  | 0.25 MPa...1 MPa<br>2.5 bar...10 bar   |
| Switching time off                                    | 30 ms  |
| Switching time on                                     | 7 ms   |
| Explosion protection                                  | The information in the certificate must be observed!<br>Zone 1 (ATEX)<br>Zone 2 (ATEX)<br>Zone 21 (ATEX)<br>Zone 22 (ATEX) |
| Operating medium                                      | Compressed air to ISO 8573-1:2010 [7:4:4]  |
| Note on operating and pilot medium                    | Lubricated operation possible (in which case lubricated operation will always be required)                                 |
| Vibration resistance                                  | Transport application test with severity level 2 to FN 942017-4 and EN 60068-2-6   |
| Shock resistance                                      | Shock test with severity level 2 to FN 942017-5 and EN 60068-2-27  |

| Feature   | Value  |
|---|--|
| Corrosion resistance class CRC                            | 2 - Moderate corrosion stress                    |
| LABS (PWIS) conformity                                    | VDMA24364-B1/B2-L                                |
| Cleanroom suitability, measured according to ISO 14644-14 | Class 6 according to ISO 14644-1                 |
| Media temperature   | -5 °C...60 °C                                    |
| Pilot medium  | Compressed air to ISO 8573-1:2010 [7:4:4]        |
| Ambient temperature                                       | -5 °C...60 °C                                    |
| Product weight  | 228 g  |
| Type of mounting  | Either:<br>On manifold rail<br>With through-hole |
| Breather connection                                       | Not ducted                                       |
| Pilot air port 10   | M5   |
| Pneumatic connection, port 1                              | G1/4   |
| Pneumatic connection, port 2                              | G1/4   |
| Pneumatic connection, port 3                              | G1/4   |
| Note on materials   | RoHS-compliant                                   |
| Material seals  | HNBR<br>NBR<br>TPE-U(PU)                         |
| Material housing  | Die-cast aluminium<br>Painted                    |
| Material screws   | Galvanised steel                                 |