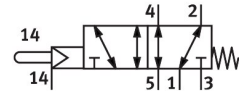
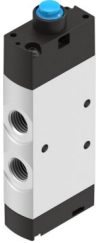


# Stem actuated valve VMEF-SCZ-M52-M-G14

Part number: 8031327

FESTO



## Data sheet

Feature	Value
Valve function	5/2-way, monostable
Type of actuation	Mechanical
Construction width	20 mm
Standard nominal flow rate (standardised to DIN 1343)	1200 l/min
pneumatic working port	G1/4
Operating pressure	-0.095 MPa...1 MPa -0.95 bar...10 bar
Design	Piston gate valve
Type of reset	Mechanical spring
Nominal size	7 mm
Instructions on use	Do not use as a mechanical stop
Sealing principle	Soft
Mounting position	optional
Type of piloting	Pilot actuated
Pilot air supply	External
Flow direction	Reversible
lap	Overlap
Pilot pressure	0.25 MPa...1 MPa 2.5 bar...10 bar 36.25 psi...145 psi
Max. switching frequency	3 Hz
Explosion protection	Zone 1 (ATEX) Zone 2 (ATEX) Zone 21 (ATEX) Zone 22 (ATEX)
Operating medium	Compressed air to ISO 8573-1:2010 [7:-:-]
Note on operating and pilot medium	Lubricated operation possible (in which case lubricated operation will always be required)
Corrosion resistance class CRC	2 - Moderate corrosion stress
LABS (PWIS) conformity	VDMA24364-B1/B2-L
Media temperature	-10 °C...60 °C
Ambient temperature	-10 °C...60 °C
Actuating force	14 N

<b>Feature</b>	<b>Value</b>
Product weight	184 g
Type of mounting	With through-hole
Pilot air port 12/14	M5
Pneumatic connection, port 1	G1/4
Pneumatic connection, port 2	G1/4
Pneumatic connection, port 3	G1/4
Pneumatic connection, port 4	G1/4
Pneumatic connection, port 5	G1/4
Note on materials	RoHS-compliant
Material cover	PA-reinforced
Material seals	NBR
Material housing	Anodised wrought aluminium alloy