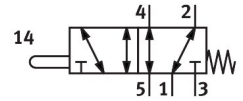


# Stem actuated valve VMEF-S-M52-M-N18

Part number: 8031307

FESTO



## Data sheet

Feature	Value
Valve function	5/2-way, monostable
Type of actuation	Mechanical
Construction width	20 mm
Standard nominal flow rate (standardised to DIN 1343)	750 l/min
pneumatic working port	1/8 NPT
Operating pressure	-0.095 MPa...1 MPa -0.95 bar...10 bar
Design	Piston gate valve
Type of reset	Mechanical spring
Nominal size	5.2 mm
Instructions on use	Do not use as a mechanical stop
Sealing principle	Soft
Mounting position	optional
Type of piloting	Direct
Flow direction	Reversible
lap	Overlap
Max. switching frequency	3 Hz
Explosion protection	Zone 1 (ATEX) Zone 2 (ATEX) Zone 21 (ATEX) Zone 22 (ATEX)
Operating medium	Compressed air to ISO 8573-1:2010 [7:-:-]
Note on operating and pilot medium	Lubricated operation possible (in which case lubricated operation will always be required)
Corrosion resistance class CRC	2 - Moderate corrosion stress
LABS (PWIS) conformity	VDMA24364-B1/B2-L
Media temperature	-10 °C...60 °C
Ambient temperature	-10 °C...60 °C
Actuating force	34 N
Product weight	145 g
Type of mounting	With through-hole
Pneumatic connection, port 1	1/8 NPT
Pneumatic connection, port 2	1/8 NPT

<b>Feature</b>	<b>Value</b>
Pneumatic connection, port 3	1/8 NPT
Pneumatic connection, port 4	1/8 NPT
Pneumatic connection, port 5	1/8 NPT
Note on materials	RoHS-compliant
Material cover	PA-reinforced
Material seals	NBR
Material housing	Anodised wrought aluminium alloy