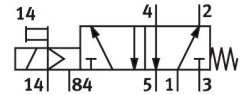


Solenoid valve VUVS-LT20-M52-MZD-G18-F7

Part number: 577495

FESTO



Data sheet

Feature	Value
Valve function	5/2-way, monostable
Type of actuation	Electric
Valve size	21 mm
Standard nominal flow rate (standardised to DIN 1343)	500 l/min
pneumatic working port	G1/8
Operating pressure	0.25 MPa...1 MPa 2.5 bar...10 bar
Design	Poppet seat
Type of reset	Mechanical spring
Approval	c UL us - Recognized (OL)
Nominal size	5 mm
Exhaust-air function	With flow control option
Sealing principle	Soft
Mounting position	optional
Manual override	Detenting Non-detenting
Type of piloting	Pilot actuated
Pilot air supply	External
Flow direction	Non-reversible
lap	Underlap
Pilot pressure	0.25 MPa...1 MPa 2.5 bar...10 bar
b value	0.31
C value	2.1 l/sbar
Switching time off	19 ms
Switching time on	15 ms
Max. positive test pulse with 0 signal	1900 µs
Max. negative test pulse with 1 signal	2700 µs
Operating medium	Compressed air to ISO 8573-1:2010 [7:4:4]
Note on operating and pilot medium	Lubricated operation possible (in which case lubricated operation will always be required)
Vibration resistance	Transport application test with severity level 2 to FN 942017-4 and EN 60068-2-6

Feature	Value
Shock resistance	Shock test with severity level 2 to FN 942017-5 and EN 60068-2-27
Corrosion resistance class CRC	2 - Moderate corrosion stress
LABS (PWIS) conformity	VDMA24364-B1/B2-L
Cleanroom suitability, measured according to ISO 14644-14	Class 6 according to ISO 14644-1
Media temperature	-10 °C...60 °C
Pilot medium	Compressed air to ISO 8573-1:2010 [7:4:4]
Ambient temperature	-10 °C...60 °C
Product weight	167 g
Type of mounting	Either: On manifold rail With through-hole
Breather connection	Not ducted
Pilot exhaust port 84	M5
Pilot air port 14	M5
Pneumatic connection, port 1	G1/8
Pneumatic connection, port 2	G1/8
Pneumatic connection, port 3	G1/8
Pneumatic connection, port 4	G1/8
Pneumatic connection, port 5	G1/8
Note on materials	RoHS-compliant
Material seals	HNBR NBR TPE-U(PU)
Material housing	Die-cast aluminium Painted
Material screws	Galvanised steel