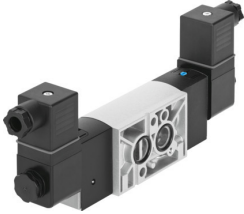


# Solenoid valve

## VSNC-F-B52-D-G14-FN-1A1-EX4-A

FESTO

Part number: 577 282



## Data sheet

Feature	Value
Valve function	5/2 bistable
Type of actuation	Electric
Construction width	32 mm
Standard nominal flow rate (standardised to DIN 1343)	1350 l/min
pneumatic working port	NAMUR port pattern
Operating voltage	24V DC
Operating pressure	0.15 MPa...0.8 MPa 1.5 bar...8 bar
Design	Piston gate valve
Explosion protection certification outside the EU	EPL Db (IEC-EX) EPL Ga (IEC-EX)
Certificate issuing authority	DNVGL-TAA000011J
ATEX category gas	II 2G
ATEX category dust	II 2D
Explosion ignition protection type for gas	Ex ia IIC T6 Ga
Explosion ignition protection type for dust	Ex t IIIIC T80°C Db
Explosion ambient temperature	-40 °C <= Ta <= +50 °C
Degree of protection	IP65 With plug socket To IEC 60529
Exhaust-air function	With flow control option
Sealing principle	Soft
Mounting position	optional
Conforms to standard	VDI/VDE 3845 (NAMUR)
Manual override	Detenting Non-detenting
Type of piloting	Pilot actuated
Pilot air supply	Internal
Flow direction	Non-reversible
lap	Overlap
Signal status display	With accessories
b value	0.4
C value	5.6 l/sbar

Feature	Value
Switching time reversal	20 ms
Duty cycle	100%
Max. input voltage $U_i$	28 V
Max. input current $I_i$	115 mA
Permissible voltage fluctuations	+/- 10 %
Explosion protection	Zone 0 (IEC-EX) Zone 1 (ATEX) Zone 2 (ATEX) Zone 21 (ATEX) Zone 21 (IEC-EX) Zone 22 (ATEX)
Operating medium	Compressed air to ISO 8573-1:2010 [7:4:4]
Note on operating and pilot medium	Lubricated operation possible (in which case lubricated operation will always be required)
Corrosion resistance class CRC	2 - Moderate corrosion stress
LABS (PWIS) conformity	VDMA24364-B2-L
Media temperature	-20 °C...60 °C
Ambient temperature	-20 °C...60 °C
Product weight	685 g
Electrical connection	Type A To EN 175301-803
Type of mounting	With through-hole
Breather connection	Not ducted
Pneumatic connection, port 1	G1/4
Pneumatic connection, port 2	NAMUR port pattern
Pneumatic connection, port 3	G1/4
Pneumatic connection, port 4	NAMUR port pattern
Pneumatic connection, port 5	G1/4
Note on materials	RoHS-compliant
Material seals	NBR
Material housing	Wrought aluminium alloy
Material screws	Galvanised steel