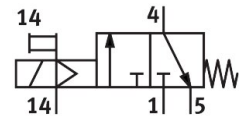
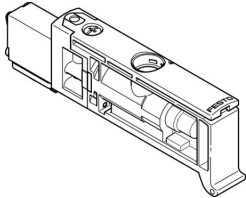


Solenoid valve

VUVB-ST12-M32C-MZH-QX-1T1

Part number: 575997

FESTO



Data sheet

| Feature | Value |
|---|--|
| Valve function | 3/2-way, closed, monostable |
| Type of actuation | Electric |
| Valve size | 12 mm |
| Standard nominal flow rate (standardised to DIN 1343) | 240 l/min...400 l/min |
| pneumatic working port | QS-4 QS-6 |
| Operating pressure | 0.2 MPa...0.8 MPa 2 bar...8 bar |
| Design | Poppet valve with spring return |
| Degree of protection | IP65 |
| Nominal size | 4 mm |
| Exhaust-air function | Without flow control option |
| Sealing principle | Soft |
| Mounting position | optional |
| Manual override | Non-detenting |
| Type of piloting | Pilot actuated |
| Pilot air supply | External |
| Flow direction | Non-reversible |
| Note on operating pressure | 0 - 0.8 MPa with ext. pilot air 0 - 8 bar with external pilot air |
| Pilot pressure | 0.2 MPa...0.8 MPa 2 bar...8 bar |
| Switching time off | 14 ms |
| Switching time on | 6 ms |
| Duty cycle | 100% |
| Max. positive test pulse with 0 signal | 800 µs |
| Max. negative test pulse with 1 signal | 300 µs |
| Characteristic coil data | 24 V DC: 1.0 W |
| Permissible voltage fluctuations | +/- 10 % |
| Operating medium | Compressed air to ISO 8573-1:2010 [7:4:4] |
| Note on operating and pilot medium | Lubricated operation possible (in which case lubricated operation will always be required) |

| Feature | Value |
|--------------------------------|--|
| Vibration resistance | Transport application test with severity level 1 to FN 942017-4 and EN 60068-2-6 |
| Shock resistance | Shock test with severity level 1 to FN 942017-5 and EN 60068-2-27 |
| Corrosion resistance class CRC | 0 - No corrosion stress |
| LABS (PWIS) conformity | VDMA24364-B1/B2-L |
| Media temperature | -5 °C...60 °C |
| Sound pressure level | 85 dB(A) |
| Ambient temperature | -5 °C...60 °C |
| Product weight | 26.3 g |
| Electrical connection | Via sub-base |
| Type of mounting | On sub-base |
| Auxiliary pilot air port 14 | Sub-base |
| Pneumatic connection, port 1 | Sub-base |
| Pneumatic connection, port 3 | Sub-base |
| Pneumatic connection, port 5 | Sub-base |
| Note on materials | RoHS-compliant |
| Material seals | NBR TPE-U(PU) |
| Material housing | PA-reinforced |
| Material piston slide | Wrought aluminium alloy |